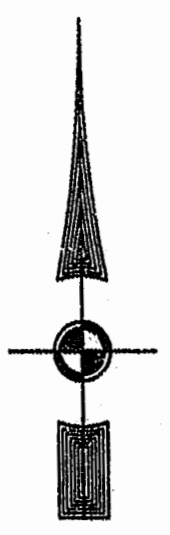


EXIST. 20' JAMES CITY COUNTY SERVICE AUTHORITY SAN. SEWER EASEMENT AS SHOWN IN AS-BUILT LOCATION. D.B. 141 - PG. 388



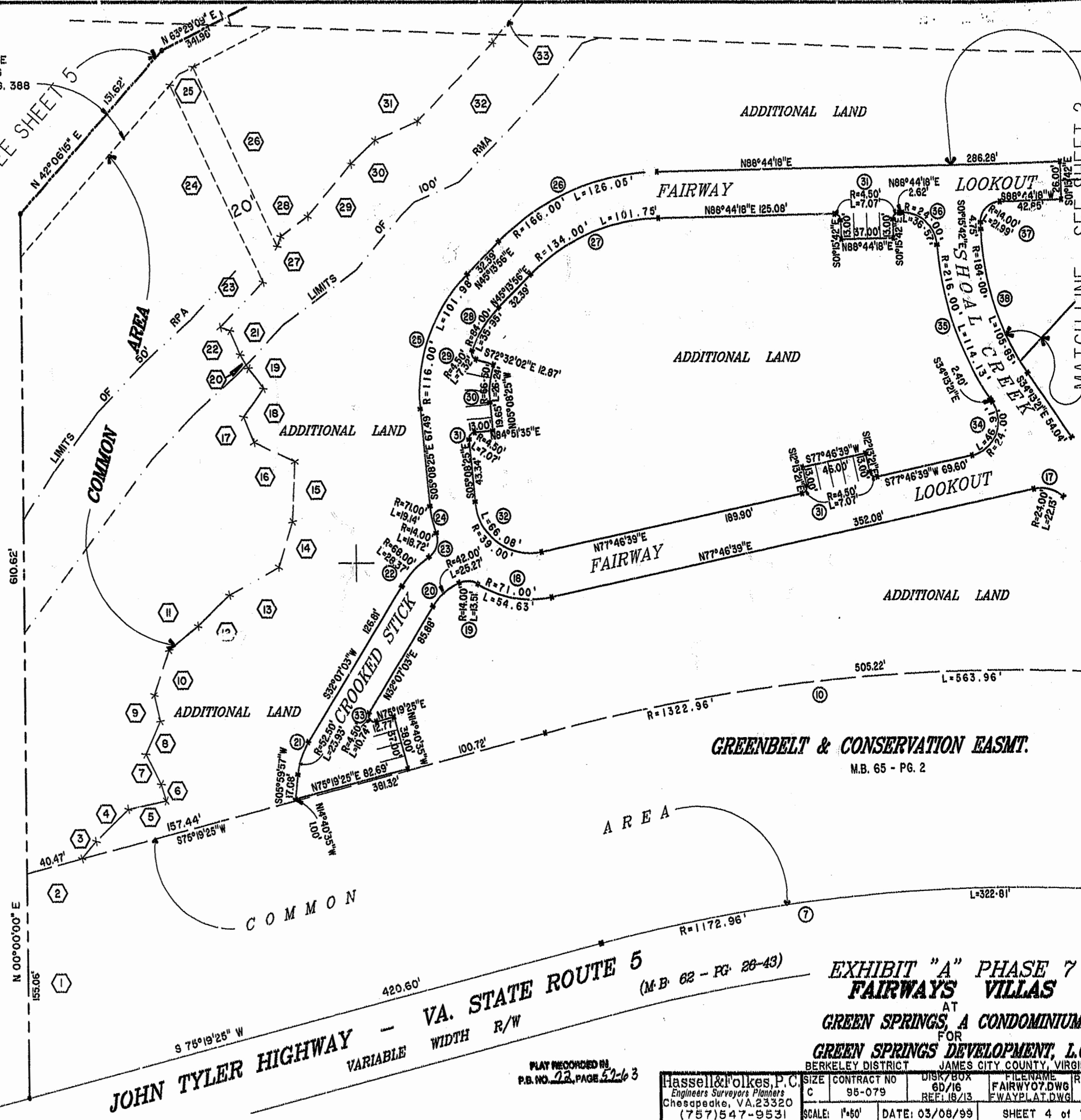
MATCH LINE - SEE SHEET 5

MATCH LINE - SEE SHEET 2

46-1-01-0-0001
"GREENSPRINGS PLANTATION"
(DB 322, PG 254)



1:25pm
Recorded 24 day of March 1999
DOCUMENT # 99 002 63 64
Kathleen Sillars, Clerk



GREENBELT & CONSERVATION EASMT.
M.B. 65 - PG. 2

VA. STATE ROUTE 5
(M.B. 62 - PG. 28-43)
VARIABLE WIDTH R/W
JOHN TYLER HIGHWAY

EXHIBIT "A" PHASE 7
FAIRWAYS VILLAS
AT
GREEN SPRINGS, A CONDOMINIUM
FOR
GREEN SPRINGS DEVELOPMENT, L.C.
BERKELEY DISTRICT JAMES CITY COUNTY, VIRGINIA

PLAT RECORDED IN
P.B. NO. 22, PAGE 52-63

Hassell & Folkes, P.C. Engineers Surveyors Planners Chesapeake, VA. 23320 (757) 547-9531	SIZE	CONTRACT NO	DISK/BOX	FILENAME	REV.
	C	95-079	6D/16 REF. 18/13	FAIRWAY07.DWG FWAYPLAT.DWG	
SCALE: 1"=60'		DATE: 03/08/99	SHEET 4 of 7		