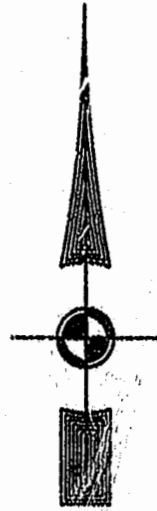


EXIST. 20' JAMES CITY COUNTY SERVICE AUTHORITY SAN. SEWER EASEMENT AS SHOWN IN AS-BUILT LOCATION. D.B. 141 - PG. 388



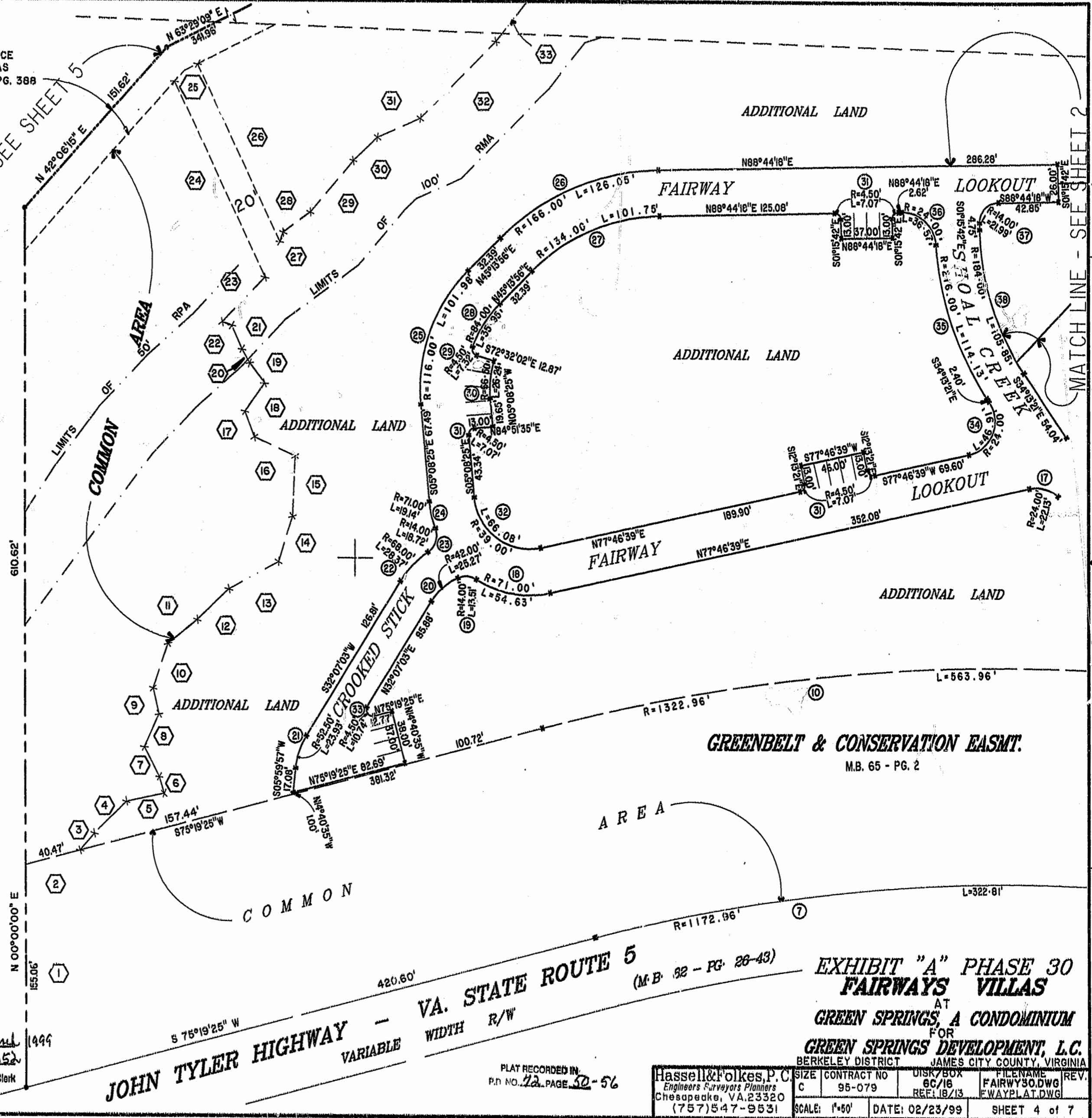
MATCH LINE - SEE SHEET 5

MATCH LINE - SEE SHEET 2

46-1-01-0-0001
"GREENSPRINGS PLANTATION"
(DB 322, PG 254)



1:15 PM
Recorded 24 day of March 1999
DOCUMENT # 99 002 6352
Helen S. [Signature] Clerk



JOHN TYLER HIGHWAY - VA. STATE ROUTE 5
VARIABLE WIDTH R/W
420.60'
(M.B. 82 - PG. 28-43)

GREENBELT & CONSERVATION EASMT.
M.B. 65 - PG. 2

EXHIBIT "A" PHASE 30
FAIRWAYS VILLAS
AT
GREEN SPRINGS, A CONDOMINIUM
FOR
GREEN SPRINGS DEVELOPMENT, L.C.
BERKELEY DISTRICT JAMES CITY COUNTY, VIRGINIA

Hassell & Folkes, P.C. Engineers Surveyors Planners Chesapeake, VA, 23320 (757) 547-9531	SIZE C	CONTRACT NO 95-079	DISK/BOX 6C/16	FILENAME FAIRWY30.DWG	REV. FWAYPLAT.DWG
PLAT RECORDED IN P.D. NO. 72, PAGE 30-56	SCALE: 1"=60'	DATE: 02/23/99	SHEET 4 of 7		