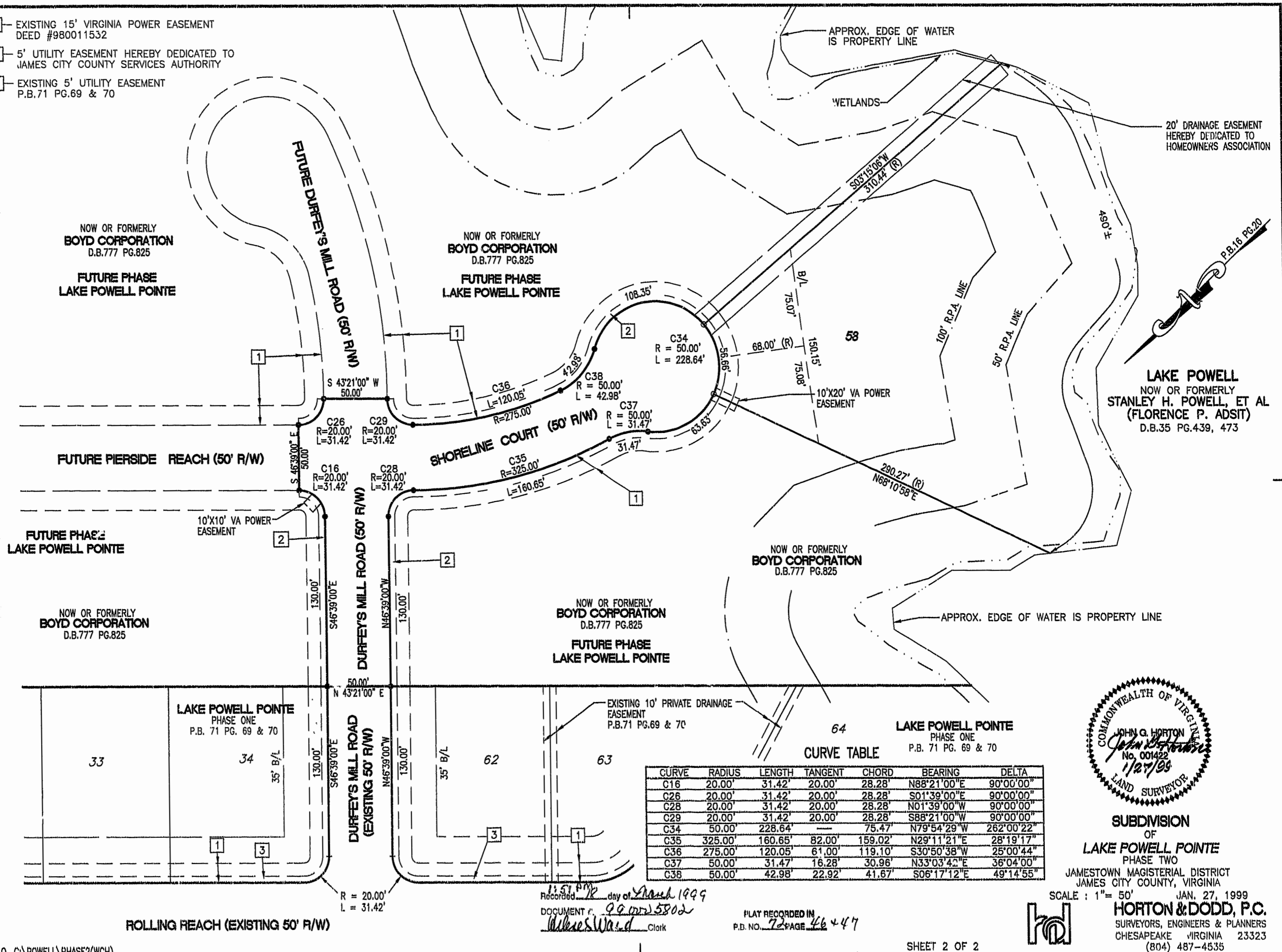
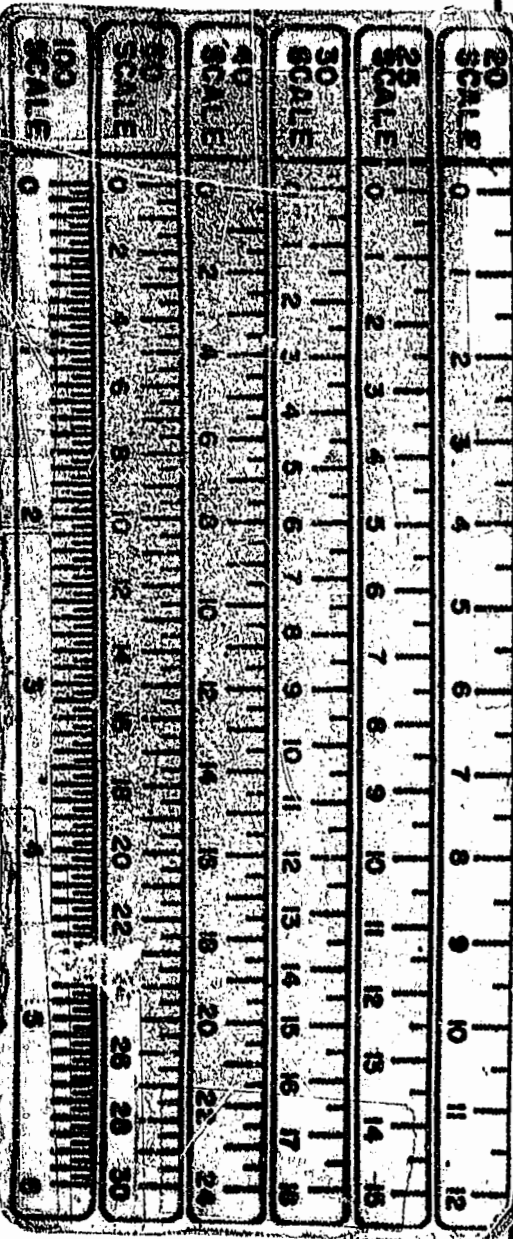


- 1- EXISTING 15' VIRGINIA POWER EASEMENT
DEED #980011532
- 2- 5' UTILITY EASEMENT HEREBY DEDICATED TO
JAMES CITY COUNTY SERVICES AUTHORITY
- 3- EXISTING 5' UTILITY EASEMENT
P.B.71 PG.69 & 70



CURVE TABLE

CURVE	RADIUS	LENGTH	TANGENT	CHORD	BEARING	DELTA
C16	20.00'	31.42'	20.00'	28.28'	N88°21'00"E	90°00'00"
C26	20.00'	31.42'	20.00'	28.28'	S01°39'00"E	90°00'00"
C28	20.00'	31.42'	20.00'	28.28'	N01°39'00"W	90°00'00"
C29	20.00'	31.42'	20.00'	28.28'	S88°21'00"W	90°00'00"
C34	50.00'	228.64'	---	75.47'	N79°54'29"W	262°00'22"
C35	325.00'	160.65'	82.00'	159.02'	N29°11'21"E	28°19'17"
C36	275.00'	120.05'	61.00'	119.10'	S30°50'38"W	25°00'44"
C37	50.00'	31.47'	16.28'	30.96'	N33°03'42"E	36°04'00"
C38	50.00'	42.98'	22.92'	41.67'	S06°17'12"E	49°14'55"



SUBDIVISION
OF
LAKE POWELL POINTE
PHASE TWO
JAMESTOWN MAGISTERIAL DISTRICT
JAMES CITY COUNTY, VIRGINIA
SCALE: 1" = 50'
JAN. 27, 1999
HORTON & DODD, P.C.
SURVEYORS, ENGINEERS & PLANNERS
CHESAPEAKE VIRGINIA 23323
(804) 487-4535

Recorded 1:51 PM day of March 1999
DOCUMENT # 99-0005802
Wilkes Ward Clerk

PLAT RECORDED IN
P.B. NO. 72 PAGE 46 + 47