

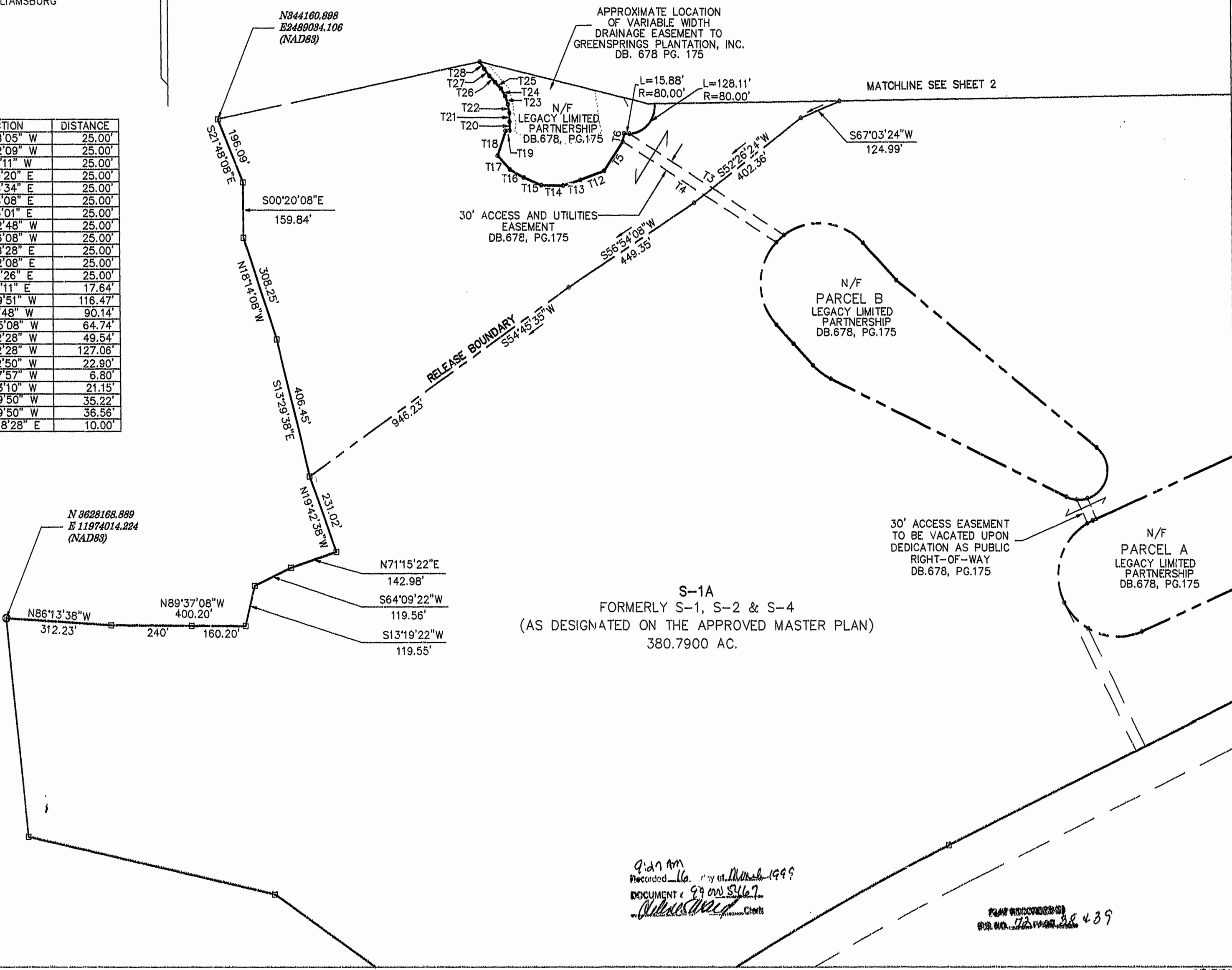
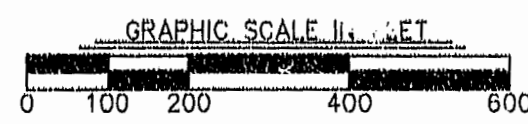
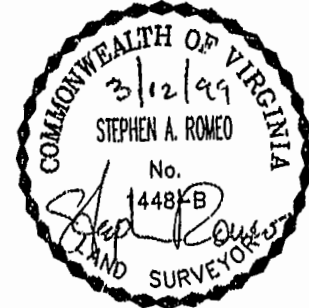
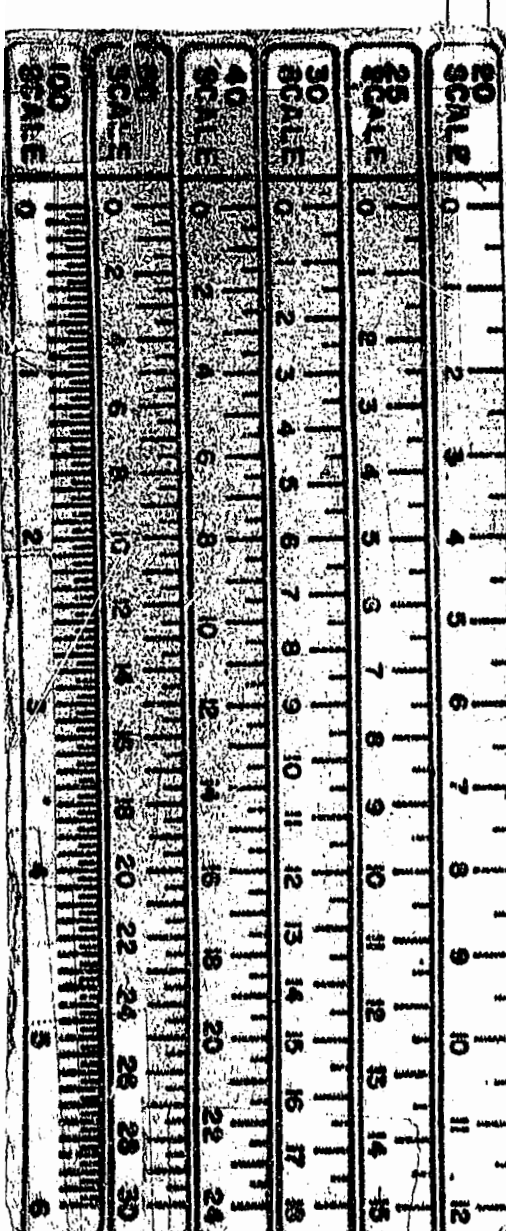
PLAT SHOWING
RELEASE PARCEL 1
GREENSPRINGS PLANTATION, INC.
FOR
JAMESTOWN, L.L.C.
BERKELEY DISTRICT
JAMES CITY COUNTY, VIRGINIA
DATE: 3/12/99 SCALE: 1"=200'
SHEET 2 OF 2



Langley and McDonald, P.C.
Engineers Surveyors Planners
Landscape Architects Environmental Consultants
VIRGINIA BEACH WILLIAMSBURG

CURVE	RADIUS	LENGTH	TANGENT	CHORD	BEARING	DELTA
C1	85.00'	248.01'	756.42'	168.94'	N11°21'54"W	10°13'06"
C10	80.00'	82.26'	45.19'	78.69'	S66°27'32"W	58°55'03"
C15	145.00'	20.88'	10.46'	20.86'	S11°58'29"E	08°14'58"
C17	175.00'	127.66'	66.82'	124.85'	S16°06'05"W	41°47'50"
C18	70.00'	121.93'	83.13'	107.09'	N45°06'10"E	99°47'59"
C19	175.00'	116.68'	60.60'	114.53'	S75°54'08"W	38°12'02"
C20	150.00'	175.74'	99.52'	165.86'	N63°28'00"E	67°07'34"
C21	125.00'	197.97'	126.63'	177.92'	S75°16'31"W	90°44'35"
C23	60.00'	163.61'	285.17'	117.43'	S27°23'09"W	156°14'11"
C24	150.00'	81.21'	41.63'	80.22'	N84°36'11"E	31°01'10"
C25	150.00'	46.85'	23.62'	46.66'	N60°08'42"E	17°53'48"
C27	475.00'	59.15'	29.61'	46.66'	S83°08'35"E	7°08'07"
C30	187.96'	363.51'	272.51'	309.45'	S86°01'22"W	110°48'38"
C32	100.00'	44.60'	22.68'	44.23'	S15°36'30"E	25°33'21"
C33	130.00'	57.98'	29.48'	57.50'	S15°36'30"E	25°33'21"
C70	50.00'	94.12'	68.64'	20.75'	S25°38'50"E	107°51'23"
C161	145.00'	52.49'	26.53'	52.20'	S02°31'13"W	20°44'26"

LINE	DIRECTION	DISTANCE	LINE	DIRECTION	DISTANCE
T4	S 57°36'03" E	539.84'	T33	N 28°38'05" W	25.00'
T5	N 33°35'56" E	101.19'	T34	N 28°22'09" W	25.00'
T6	N 10°34'39" E	23.80'	T35	N 19°21'11" W	25.00'
T12	S 69°37'07" W	75.11'	T36	N 31°59'20" E	25.00'
T13	N 72°07'39" E	53.30'	T37	N 53°18'34" E	25.00'
T14	S 89°21'04" E	64.88'	T38	N 28°18'08" E	25.00'
T15	S 67°12'27" E	56.71'	T39	N 10°36'01" E	25.00'
T16	S 60°32'27" E	46.94'	T40	N 26°42'48" W	25.00'
T17	S 41°41'04" E	53.62'	T41	N 28°26'08" W	25.00'
T18	S 17°59'07" W	75.24'	T42	N 07°28'28" E	25.00'
T19	S 83°35'55" W	12.69'	T43	N 08°22'08" E	25.00'
T20	N 00°59'59" W	25.00'	T44	N 19°21'26" E	25.00'
T21	N 01°15'11" W	25.00'	T45	N 11°09'11" E	17.64'
T22	N 08°48'07" W	25.00'	T46	N 84°59'51" W	116.47'
T23	N 17°44'27" W	25.00'	T48	S 51°11'48" W	90.14'
T24	N 29°26'04" W	25.00'	T49	N 20°05'08" W	64.74'
T25	N 41°04'33" W	25.00'	T50	S 07°32'28" W	49.54'
T26	N 44°14'16" W	25.00'	T51	S 07°32'28" W	127.06'
T27	N 37°41'14" W	25.00'	T52	S 60°22'50" W	22.90'
T28	N 33°19'01" W	25.00'	T53	S 37°07'57" W	6.80'
T29	N 34°09'46" W	25.00'	T57	N 28°23'10" W	21.15'
T30	N 32°36'23" W	25.00'	T58	N 02°49'50" W	35.22'
T31	N 37°43'35" W	25.00'	T59	N 02°49'50" W	36.56'
T32	N 36°50'03" W	25.00'	T192	N 103°18'28" E	10.00'



S-1A
FORMERLY S-1, S-2 & S-4
(AS DESIGNATED ON THE APPROVED MASTER PLAN)
380.7900 AC.

9:27 AM
Recorded in City of Williamsburg 1999
DOCUMENT # 99005167
[Signature]

PLAT RECORDED IN
PLAT NO. 172 PAGE 489