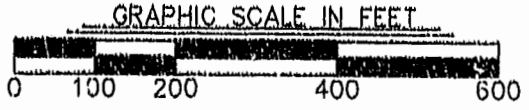
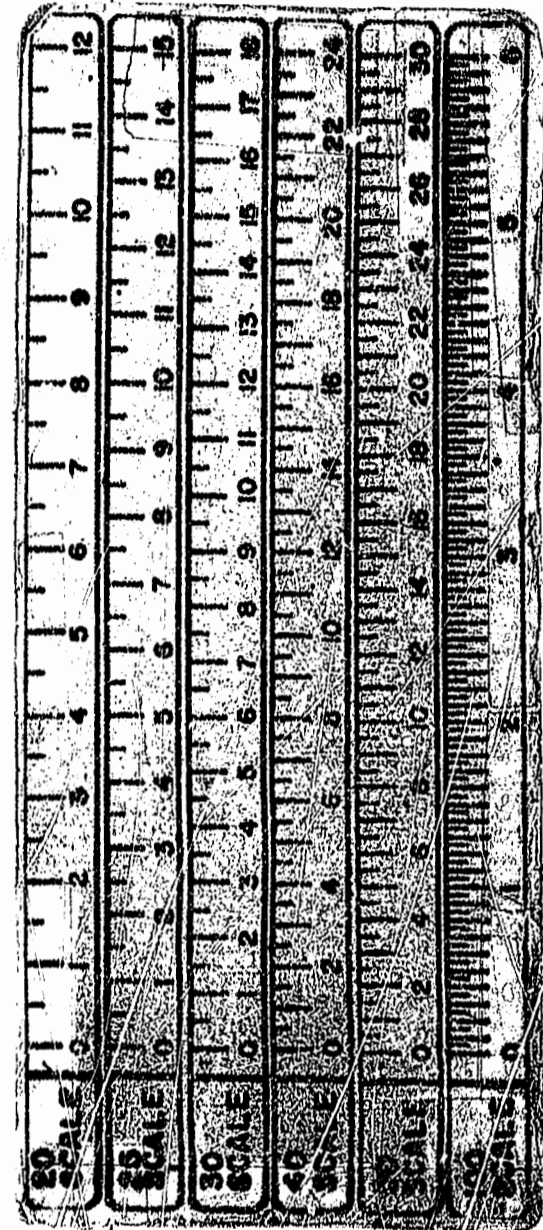
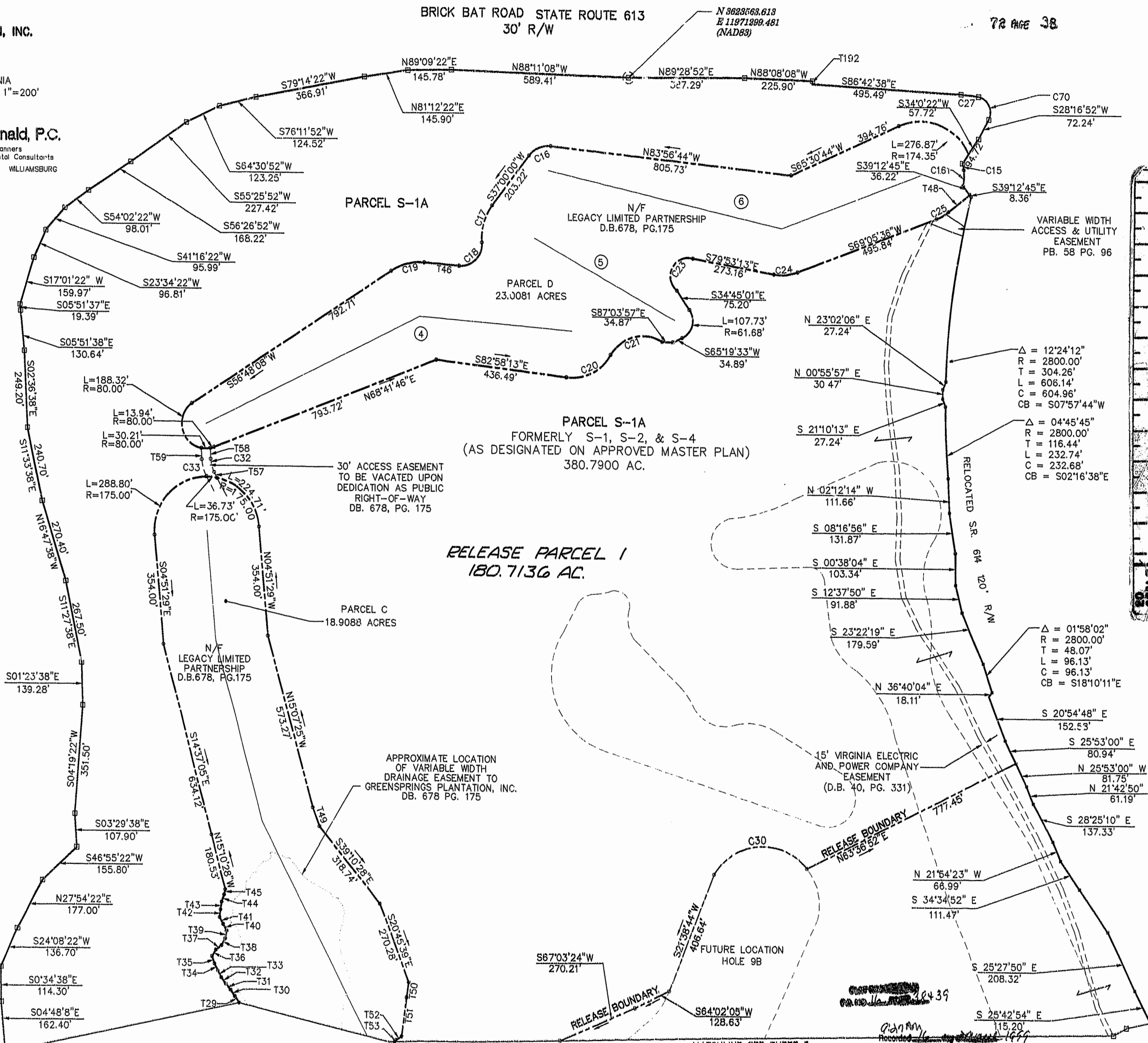


PLAT SHOWING
RELEASE PARCEL 1
GREENSPRINGS PLANTATION, INC.
FOR
JAMESTOWN, L.L.C.
BERKELEY DISTRICT
JAMES CITY COUNTY, VIRGINIA
DATE: 3/12/99 SCALE: 1"=200'
SHEET 1 OF 2

BRICK BAT ROAD STATE ROUTE 613
30' R/W

72 PAGE 38

Langley and McDonald, P.C.
Engineers Surveyors Planners
Landscape Architects Environmental Consultants
VIRGINIA BEACH WILLIAMSBURG



RELEASE PARCEL 1
180.7136 AC.

PARCEL S-1A
FORMERLY S-1, S-2, & S-4
(AS DESIGNATED ON APPROVED MASTER PLAN)
380.7900 AC.

PARCEL C
18.9088 ACRES

PARCEL D
23.0081 ACRES

30' ACCESS EASEMENT
TO BE VACATED UPON
DEDICATION AS PUBLIC
RIGHT-OF-WAY
DB. 678, PG. 175

APPROXIMATE LOCATION
OF VARIABLE WIDTH
DRAINAGE EASEMENT TO
GREENSPRINGS PLANTATION, INC.
DB. 678 PG. 175

15' VIRGINIA ELECTRIC
AND POWER COMPANY
EASEMENT
(D.B. 40, PG. 331)

VARIABLE WIDTH
ACCESS & UTILITY
EASEMENT
PB. 58 PG. 96

△ = 12°24'12"
R = 2800.00'
T = 304.26'
L = 606.14'
C = 604.96'
CB = S07°57'44"W

△ = 04°45'45"
R = 2800.00'
T = 116.44'
L = 232.74'
C = 232.68'
CB = S02°16'38"E

△ = 01°58'02"
R = 2800.00'
T = 48.07'
L = 96.13'
C = 96.13'
CB = S18°10'11"E

N844497.022
E2489019.369

FUTURE LOCATION
HOLE 9B

MATCHLINE SEE SHEET 3

Plan
Recorded
DOCUMENT # 99-000-5162
Date 11/14/99

9923W

Thu Mar 11 16:14:40 1999 LFV