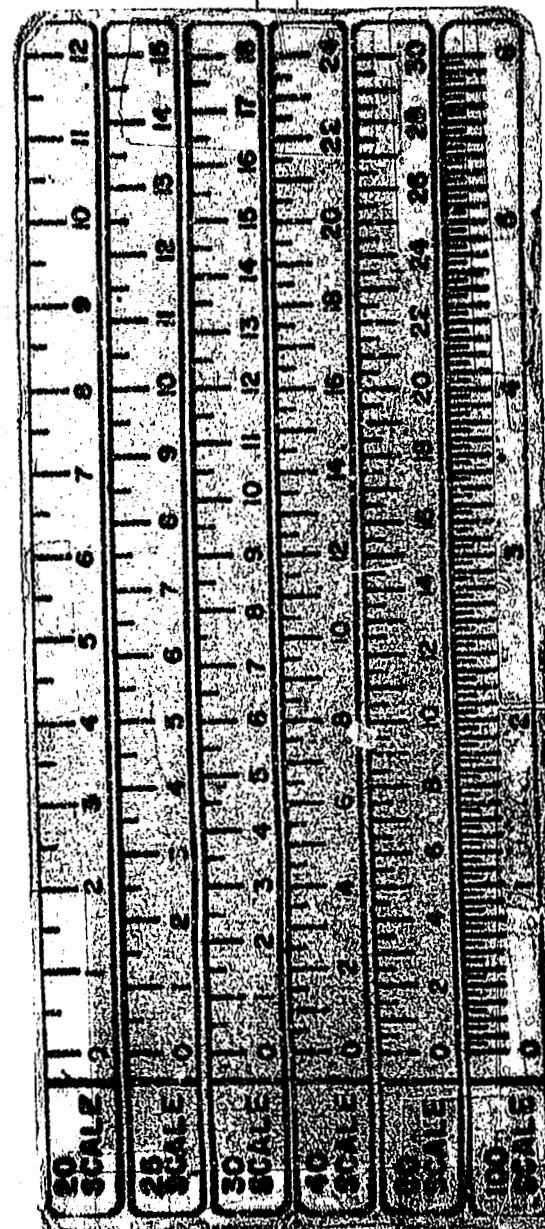
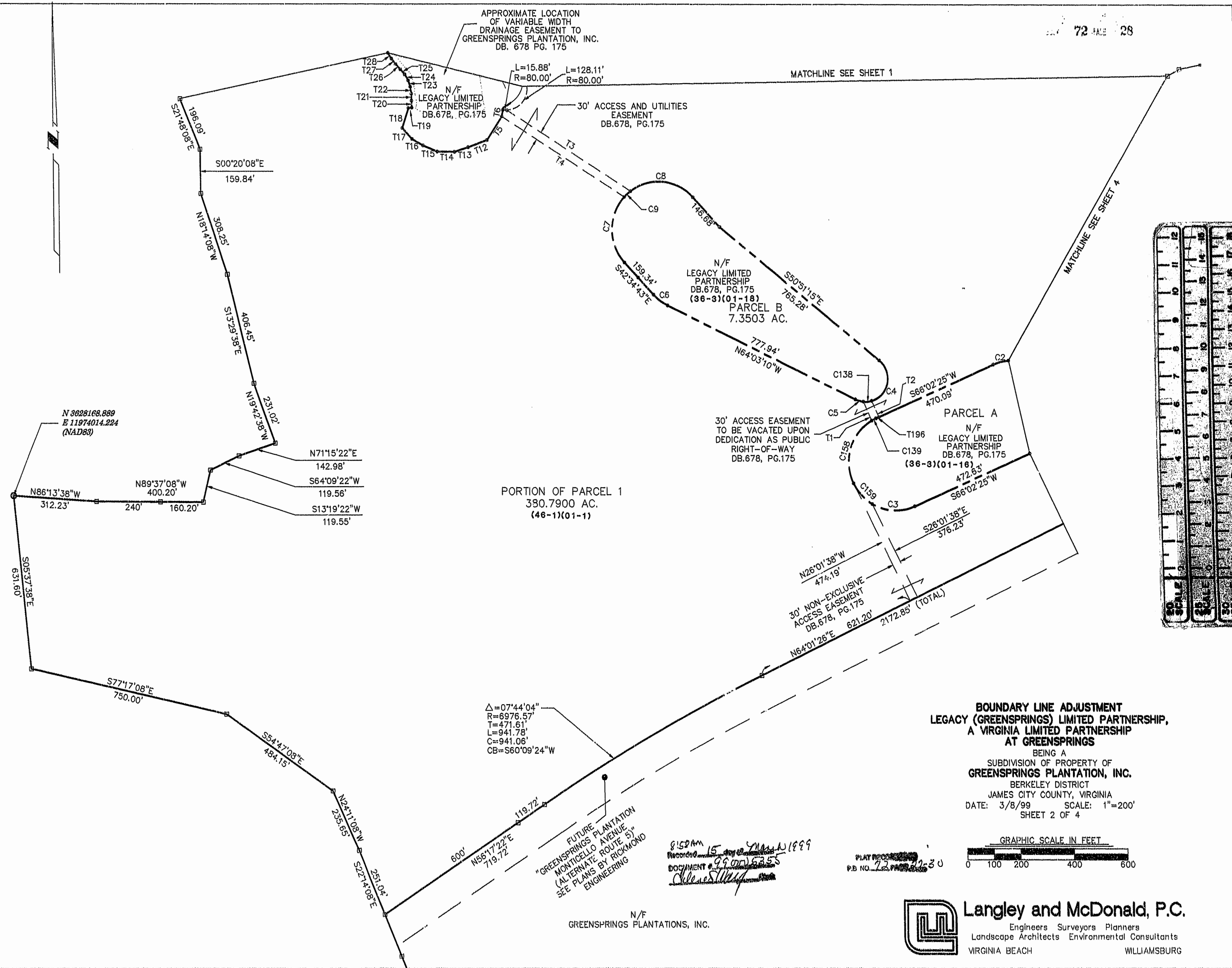


APPROXIMATE LOCATION OF VARIABLE WIDTH DRAINAGE EASEMENT TO GREENSPRINGS PLANTATION, INC. DB. 678 PG. 175

MATCHLINE SEE SHEET 1

MATCHLINE SEE SHEET 4



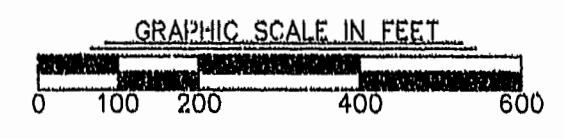
PORTION OF PARCEL 1  
380.7900 AC.  
(46-1)(01-1)

30' ACCESS EASEMENT TO BE VACATED UPON DEDICATION AS PUBLIC RIGHT-OF-WAY DB. 678, PG. 175

30' NON-EXCLUSIVE ACCESS EASEMENT DB. 878, PG. 175

**BOUNDARY LINE ADJUSTMENT  
LEGACY (GREENSPRINGS) LIMITED PARTNERSHIP,  
A VIRGINIA LIMITED PARTNERSHIP  
AT GREENSPRINGS**

BEING A  
SUBDIVISION OF PROPERTY OF  
**GREENSPRINGS PLANTATION, INC.**  
BERKELEY DISTRICT  
JAMES CITY COUNTY, VIRGINIA  
DATE: 3/8/99 SCALE: 1"=200'  
SHEET 2 OF 4



Δ=07°44'04"  
R=6976.57'  
T=471.61'  
L=941.78'  
C=941.06'  
CB=S60°09'24"W

FUTURE  
GREENSPRINGS PLANTATION  
MONTICELLO AVENUE  
(ALTERNATE ROUTE 5)  
SEE PLANS BY RICHMOND  
ENGINEERING

8:52 AM  
Recorded 15 MAR 1999  
DOCUMENT # 99-0016355  
W. McDonald

PLAT NO. 72-230  
P.B. NO. 72-230

N/F  
GREENSPRINGS PLANTATIONS, INC.



**Langley and McDonald, P.C.**  
Engineers Surveyors Planners  
Landscape Architects Environmental Consultants  
VIRGINIA BEACH WILLIAMSBURG