

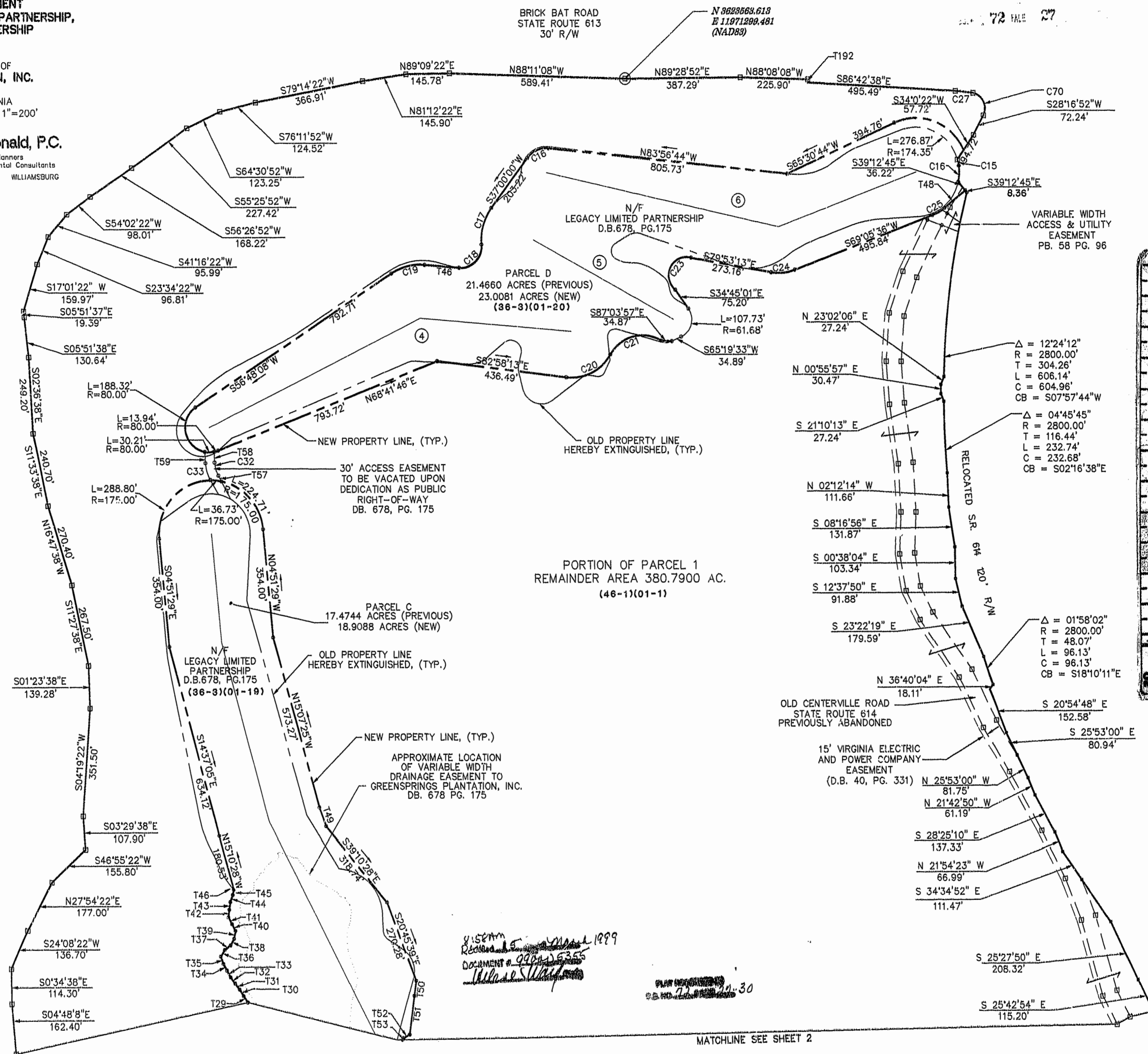
**BOUNDARY LINE ADJUSTMENT**  
**LEGACY (GREENSPRINGS) LIMITED PARTNERSHIP,**  
**A VIRGINIA LIMITED PARTNERSHIP**  
**AT GREENSPRINGS**

BEING A  
 SUBDIVISION OF PROPERTY OF  
**GREENSPRINGS PLANTATION, INC.**  
 BERKELEY DISTRICT  
 JAMES CITY COUNTY, VIRGINIA  
 DATE: 3/8/99 SCALE: 1"=200'  
 SHEET 1 OF 4

**Langley and McDonald, P.C.**  
 Engineers Surveyors Planners  
 Landscape Architects Environmental Consultants  
 VIRGINIA BEACH WILLIAMSBURG

BRICK BAT ROAD  
 STATE ROUTE 613  
 30' R/W

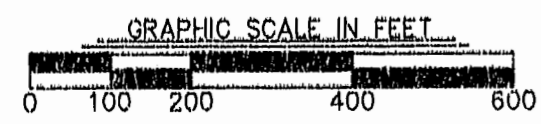
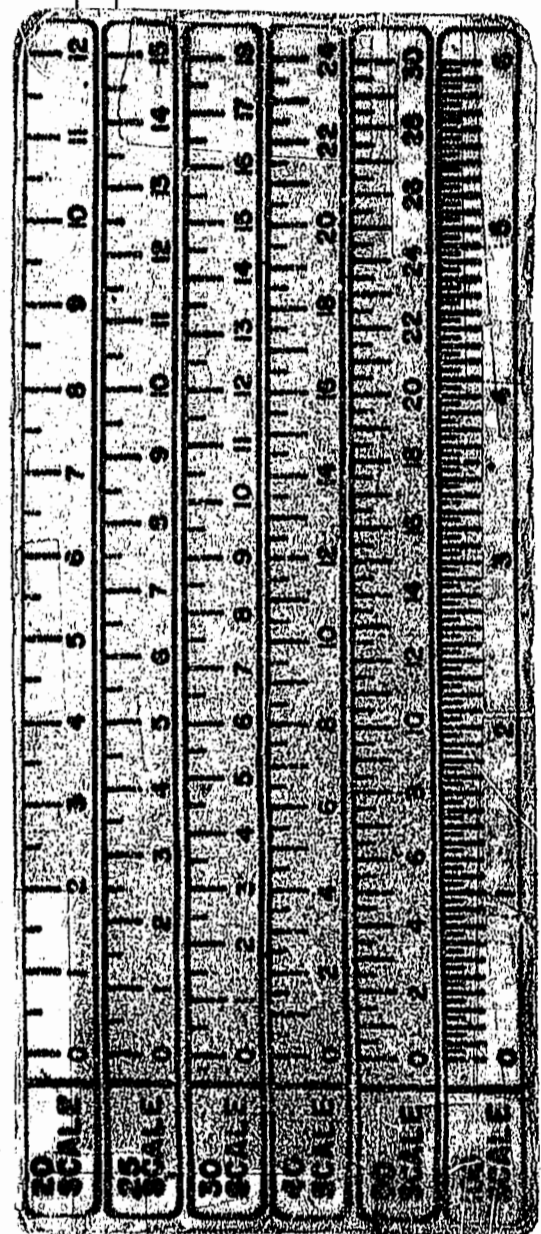
72 PAGE 27



$\Delta = 12'24.12''$   
 $R = 2800.00'$   
 $T = 304.26'$   
 $L = 606.14'$   
 $C = 604.96'$   
 $CB = S07'57'44''W$

$\Delta = 04'45.45''$   
 $R = 2800.00'$   
 $T = 116.44'$   
 $L = 232.74'$   
 $C = 232.68'$   
 $CB = S02'16'38''E$

$\Delta = 01'58.02''$   
 $R = 2800.00'$   
 $T = 48.07'$   
 $L = 96.13'$   
 $C = 96.13'$   
 $CB = S18'10'11''E$



*8:58 AM*  
*Reduced to 1999*  
*DOCUMENT # 990115365*  
*Delane S. Ward*

PLAT RECORDED  
 IN BOOK 72 PAGE 27, 30

MATCHLINE SEE SHEET 2