

46-1-01-0-0001
"GREENSPRINGS PLANTATION"
(DB 322, PG 254)

EXIST. 20' JAMES CITY COUNTY SERVICE
AUTHORITY SAN. SEWER EASEMENT AS
SHOWN IN AS-BUILT LOCATION. D.B. 141 - PG. 388

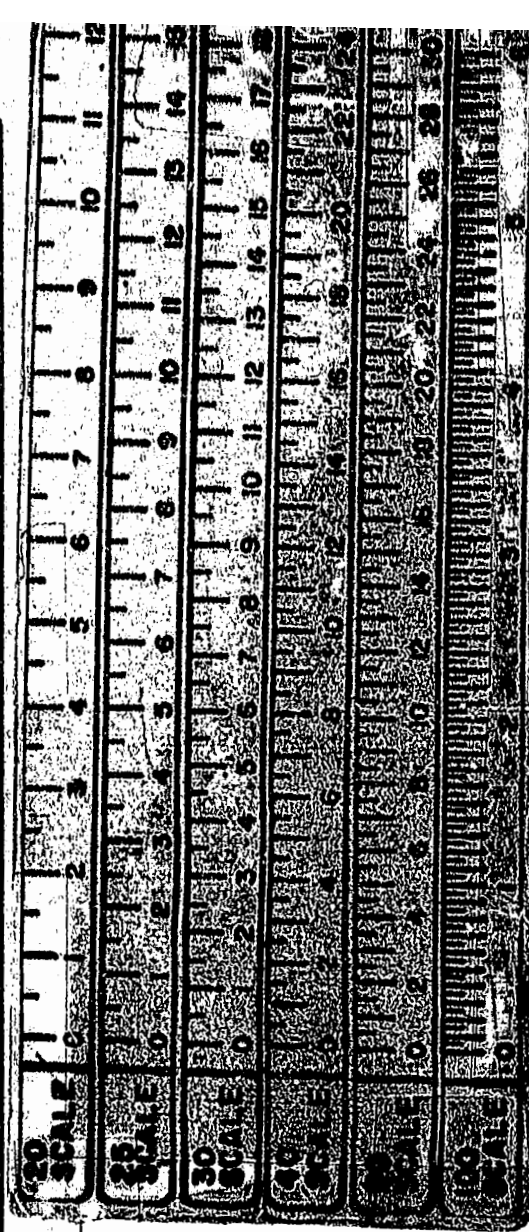
EXIST. 20' DRAINAGE EASEMENT
M.B. 65 - PG. 2

EXIST. 20' DRAINAGE EASMT.
M.B. 65 - PG. 2

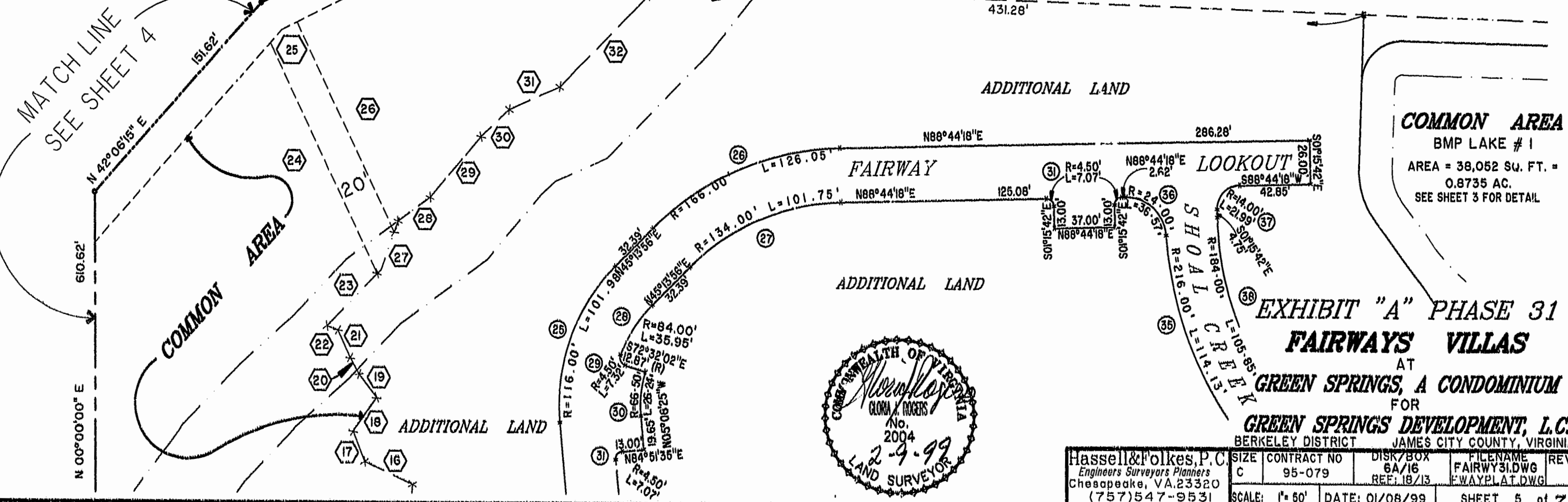
Recorded 11 day of February 1999
DOCUMENT # 99000293 / 340PM
Debra Steward Clerk

PLAT RECORDED IN
P.B. NO. 72 PAGE 1-1

MATCH LINE - SEE SHEET 3



MATCH LINE
SEE SHEET 4



COMMON AREA
BMP LAKE # 1
AREA = 38,052 SQ. FT. =
0.8735 AC.
SEE SHEET 3 FOR DETAIL

**EXHIBIT "A" PHASE 31
FAIRWAYS VILLAS**
AT
GREEN SPRINGS, A CONDOMINIUM
FOR
GREEN SPRINGS DEVELOPMENT, L.C.
BERKELEY DISTRICT JAMES CITY COUNTY, VIRGINIA



Hassell & Folkes, P.C. Engineers Surveyors Planners Chesapeake, VA 23320 (757) 547-9531	SIZE CONTRACT NO C 95-079	DISK/BOX 6A/16 REF: 18/13	FILENAME FAIRWAY31.DWG FWAYPLAT.DWG	REV.
SCALE: 1" = 60'	DATE: 01/08/99	SHEET 5 of 7		