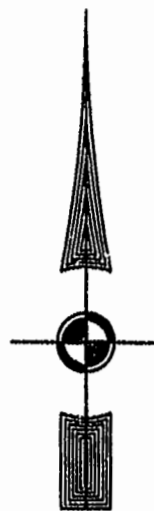


EXIST. 20' JAMES CITY COUNTY SERVICE AUTHORITY SAN. SEWER EASEMENT AS SHOWN IN AS-BUILT LOCATION. D.B. 141 - PG. 388



MATCH LINE - SEE SHEET 5

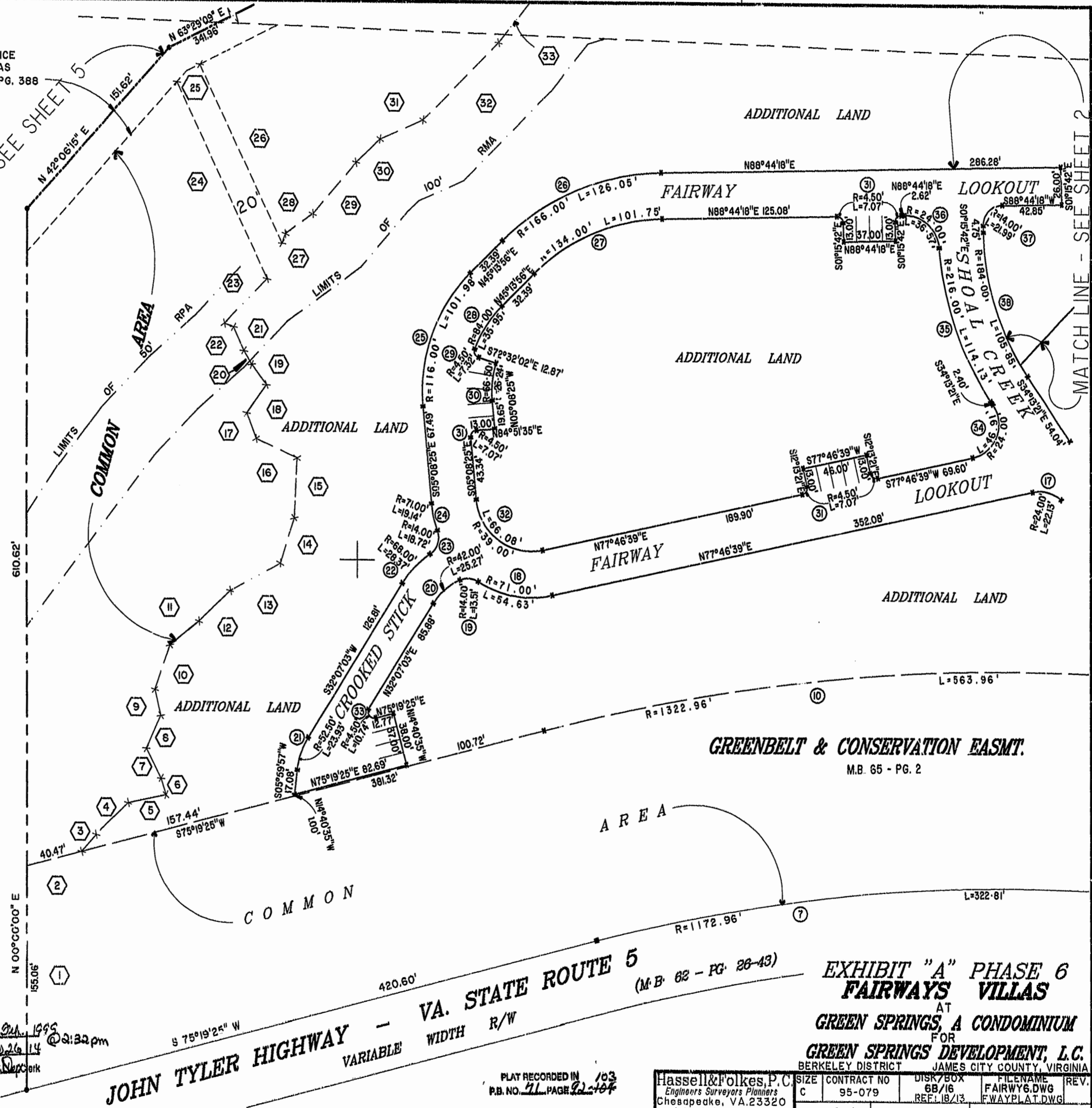
MATCH LINE - SEE SHEET 2

46-1-01-0-0001 "GREENSPRINGS PLANTATION" (DB 322, PG 254)



Recorded 9 day of 04 1999 DOCUMENT # 99-170-26 14 2:32pm

JOHN TYLER HIGHWAY - VA. STATE ROUTE 5 (M.B. 62 - PG. 28-43) VARIABLE WIDTH R/W



GREENBELT & CONSERVATION EASMT. M.B. 65 - PG. 2

EXHIBIT "A" PHASE 6 FAIRWAYS VILLAS AT GREEN SPRINGS, A CONDOMINIUM FOR GREEN SPRINGS DEVELOPMENT, L.C. BERKELEY DISTRICT JAMES CITY COUNTY, VIRGINIA

PLAY RECORDED IN 103 P.B. NO. 41 PAGE 2-164

Hassell & Folkes, P.C. Engineers Surveyors Planners Chesapeake, VA. 23320 (757) 547-9531	SIZE CONTRACT NO C 95-079	DISK/BOX 6B/16 REF: 1B/13	FILENAME FAIRWAY6.DWG FWAYPLAT.DWG	REV.
SCALE: 1"=50'	DATE: 01/12/99	SHEET 4 of 12		

