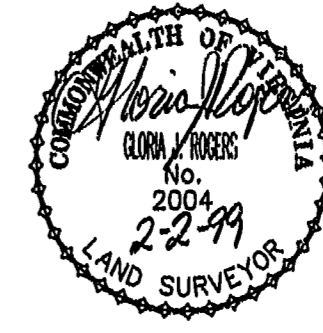
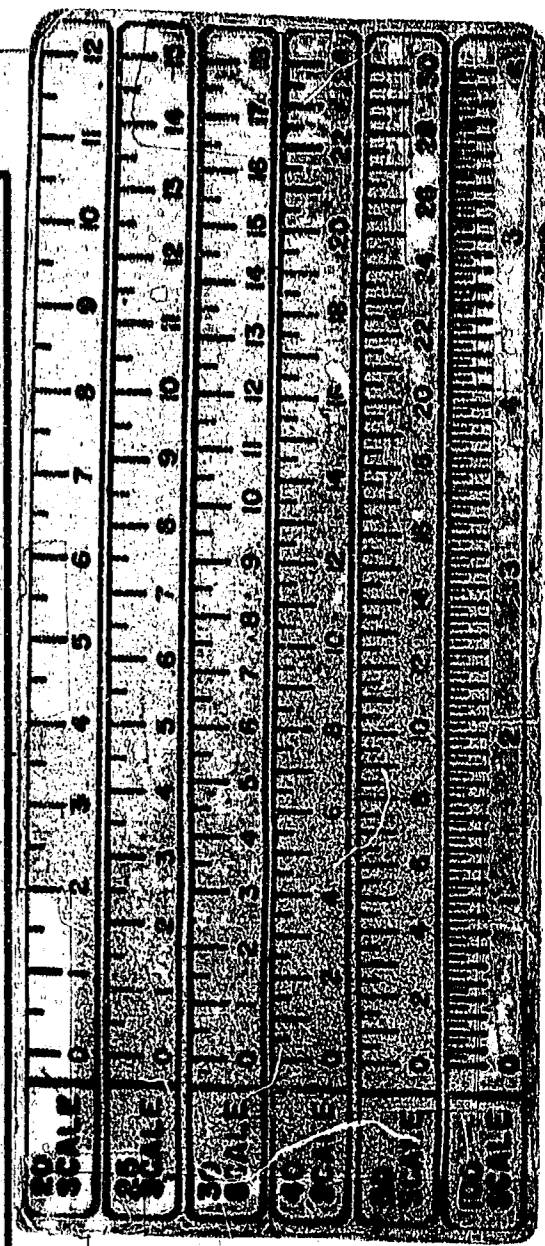
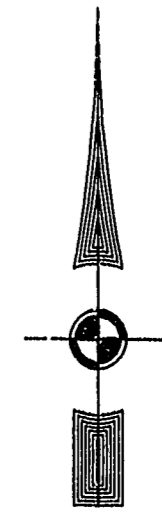
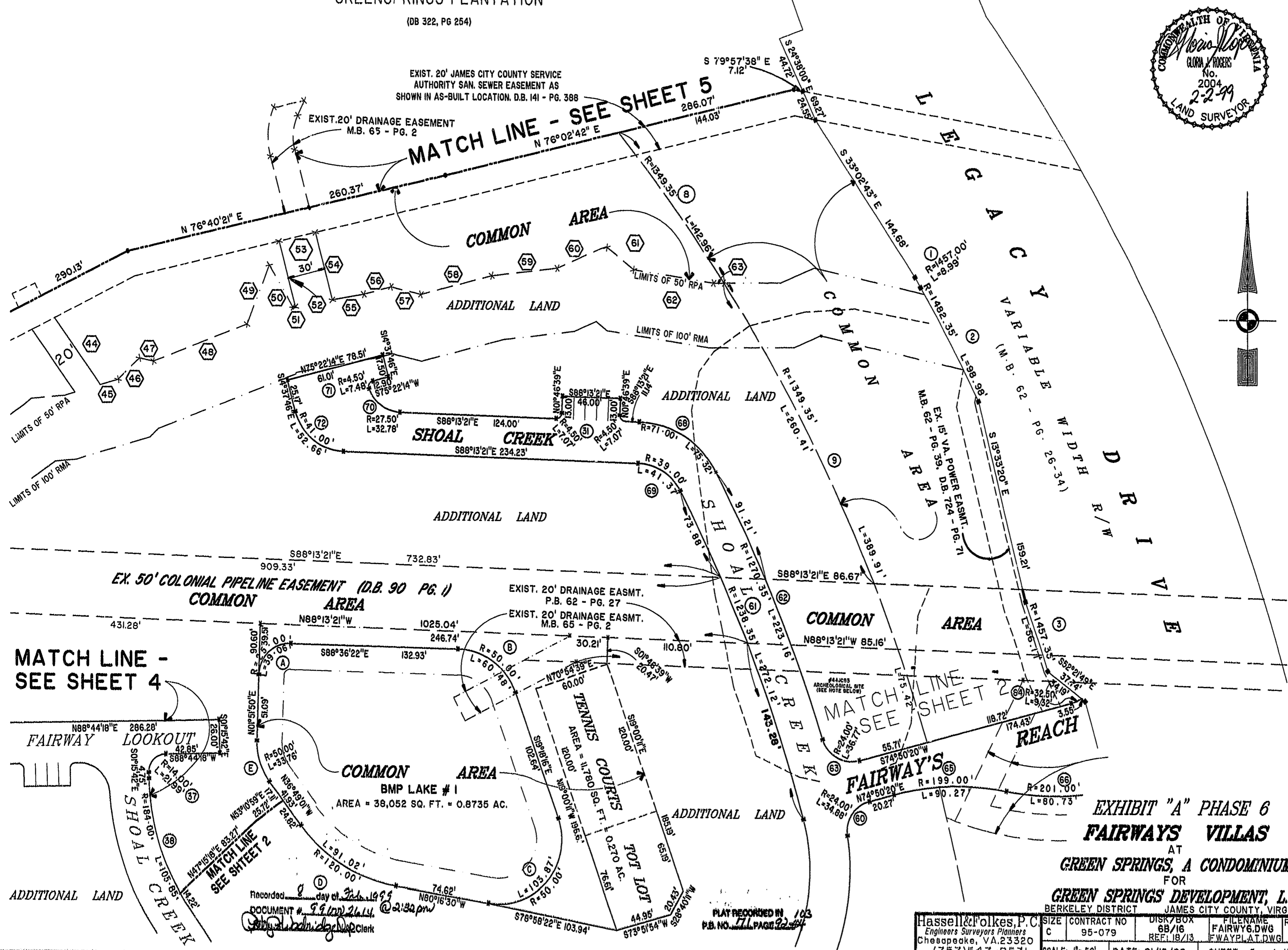


46-1-01-0-0001  
"GREENSPRINGS PLANTATION"  
(DB 322, PG 254)

EXIST. 20' JAMES CITY COUNTY SERVICE  
AUTHORITY SAN. SEWER EASEMENT AS  
SHOWN IN AS-BUILT LOCATION. D.B. 141 - PG. 388



MATCH LINE - SEE SHEET 5  
N 76°02'42" E  
286.07'  
144.03'



MATCH LINE -  
SEE SHEET 4

MATCH LINE  
SEE SHEET 2

EXHIBIT "A" PHASE 6  
FAIRWAYS VILLAS  
AT  
GREEN SPRINGS, A CONDOMINIUM  
FOR

GREEN SPRINGS DEVELOPMENT, L.C.  
BERKELEY DISTRICT JAMES CITY COUNTY, VIRGINIA

Recorded day of Feb. 1999  
DOCUMENT # 99-0002614 @ 2:32 pm  
Clerk

PLAY RECORDED IN 103  
P.B. NO. 77 PAGE 22

Hassell & Folkes, P.C. Engineers Surveyors Planners Chesapeake, VA 23320 (757) 547-9531	SIZE C	CONTRACT NO 95-079	DISK/BOX 68/16	FILENAME FAIRWAY6.DWG	REV.
	SCALE: 1" = 50'	DATE: 01/12/99	REF: 18/13	F.WAY.PLAT.DWG	SHEET 3 of 12