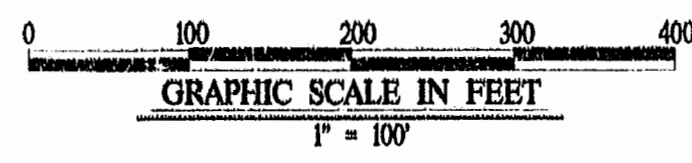
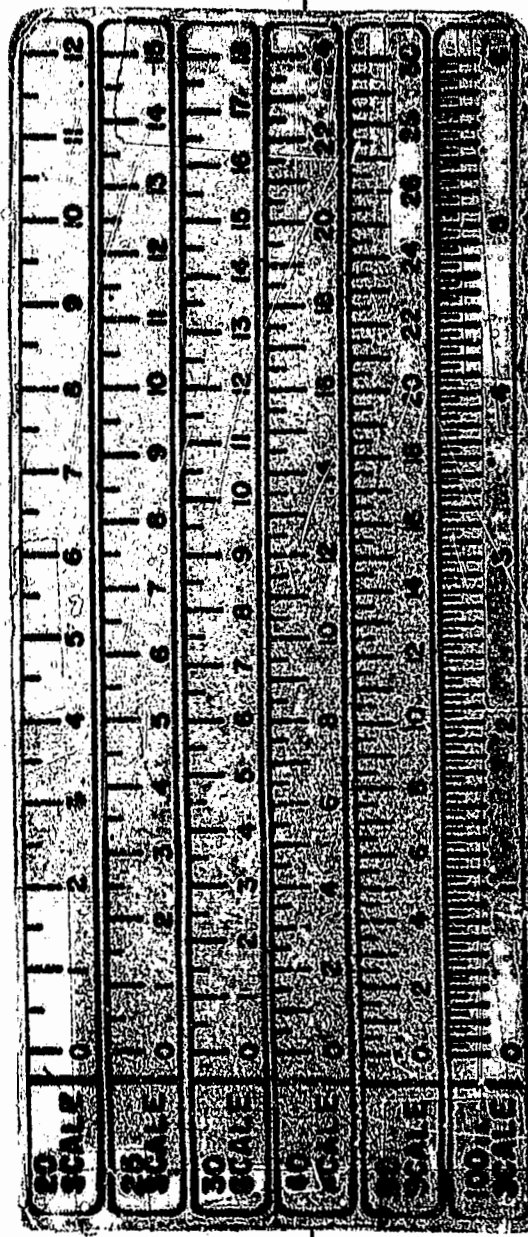
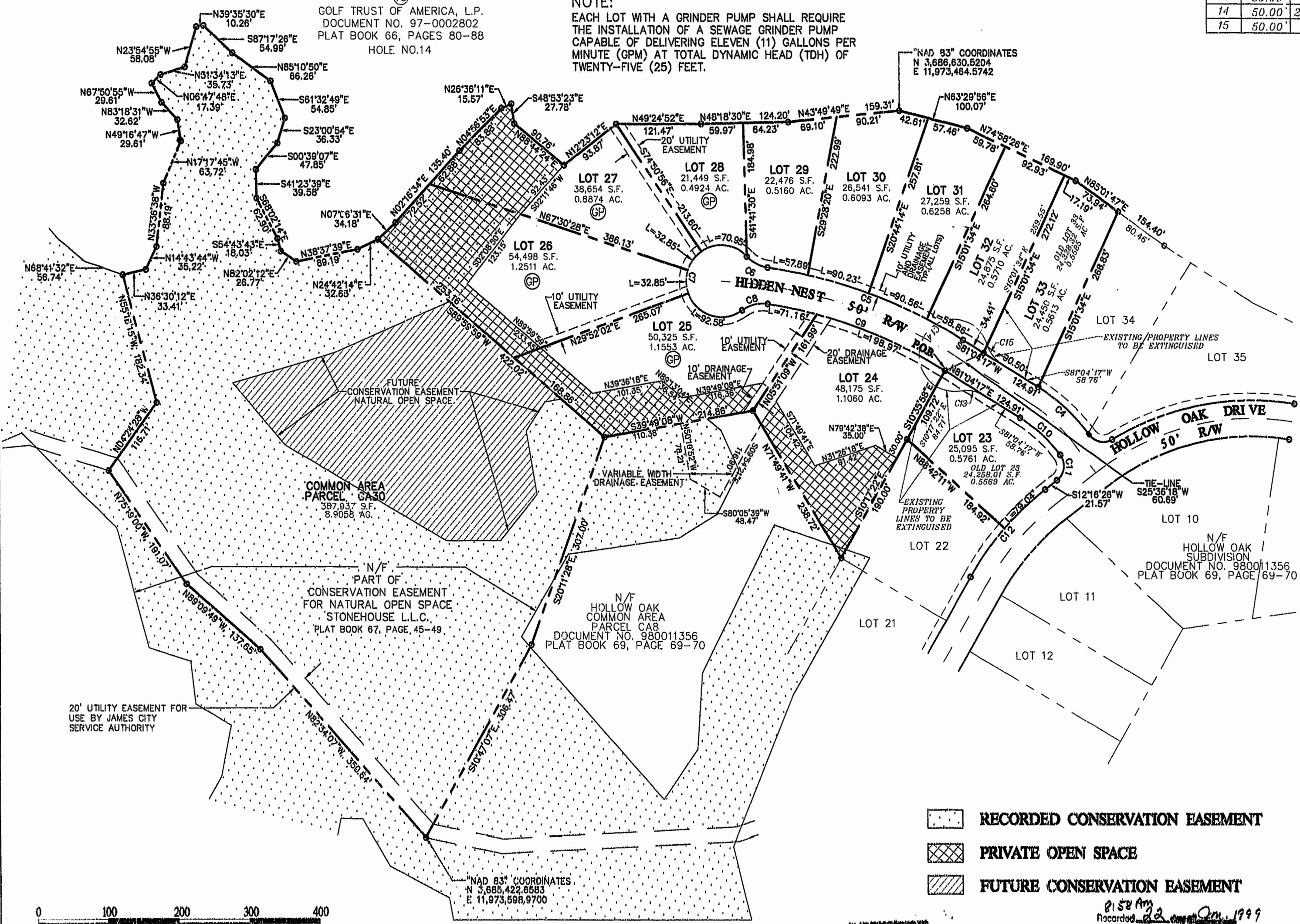


CURVE TABLE						
CURVE	RADIUS	LENGTH	TANGENT	CHORD	BEARING	DELTA
1	610.00'	390.74'	202.34'	384.09'	S16°30'50"W	36°42'04"
2	1170.00'	815.75'	425.24'	799.32'	S54°50'17"W	39°56'52"
3	1170.00'	140.97'	70.57'	140.89'	S78°15'49"W	06°54'13"
4	257.89'	95.43'	48.27'	94.89'	N88°19'39"W	21°12'09"
5	725.00'	297.54'	150.90'	295.46'	S69°18'51"W	23°30'52"
6	50.00'	33.95'	17.66'	33.30'	N77°00'28"E	38°54'06"
7	50.00'	229.23'	56.84'	75.08'	S34°52'42"E	262°40'24"
8	50.00'	38.71'	20.38'	37.75'	S35°57'48"W	44°21'24"
9	675.00'	270.13'	136.90'	268.33'	S69°36'24"W	22°55'46"
10	207.89'	76.93'	38.91'	76.49'	N88°19'39"W	21°12'09"
11	25.00'	39.27'	25.00'	35.36'	N32°43'34"W	90°00'00"
12	412.55'	162.46'	82.30'	161.42'	S00°59'32"W	22°33'48"
13	50.00'	36.14'	18.90'	35.36'	S60°21'59"W	41°24'35"
14	50.00'	229.35'	56.69'	75.00'	S08°5'43"E	262°49'09"
15	50.00'	36.14'	18.90'	35.36'	S78°13'26"E	41°24'35"

N/F PARCEL
①

GOLF TRUST OF AMERICA, L.P.
DOCUMENT NO. 97-0002802
PLAT BOOK 66, PAGES 80-88
HOLE NO.14

NOTE:
EACH LOT WITH A GRINDER PUMP SHALL REQUIRE THE INSTALLATION OF A SEWAGE GRINDER PUMP CAPABLE OF DELIVERING ELEVEN (11) GALLONS PER MINUTE (GPM) AT TOTAL DYNAMIC HEAD (TDH) OF TWENTY-FIVE (25) FEET.



- RECORDED CONSERVATION EASEMENT
- PRIVATE OPEN SPACE
- FUTURE CONSERVATION EASEMENT

PLAT RECORDED IN
P.B. NO. 71, PAGE 76

2:58 PM
Recorded 22 Aug 1999
DOCUMENT # 99-00-01458
By *Claudia H. Holtz, Dey Clark*

STONEHOUSE
SUBDIVISION PLAT
OF
HOLLOW OAK
PHASE 2
AND
BOUNDARY ADJUSTMENTS OF
LOT 23 AND LOT 33 OF
HOLLOW OAK
BEING A SUBDIVISION
OF
STONEHOUSE LIMITED LIABILITY
COMPANY
STONEHOUSE DISTRICT, JAMES CITY COUNTY
DATE: 09/25/98 SCALE: 1"=100'
SHEET 2 OF 2