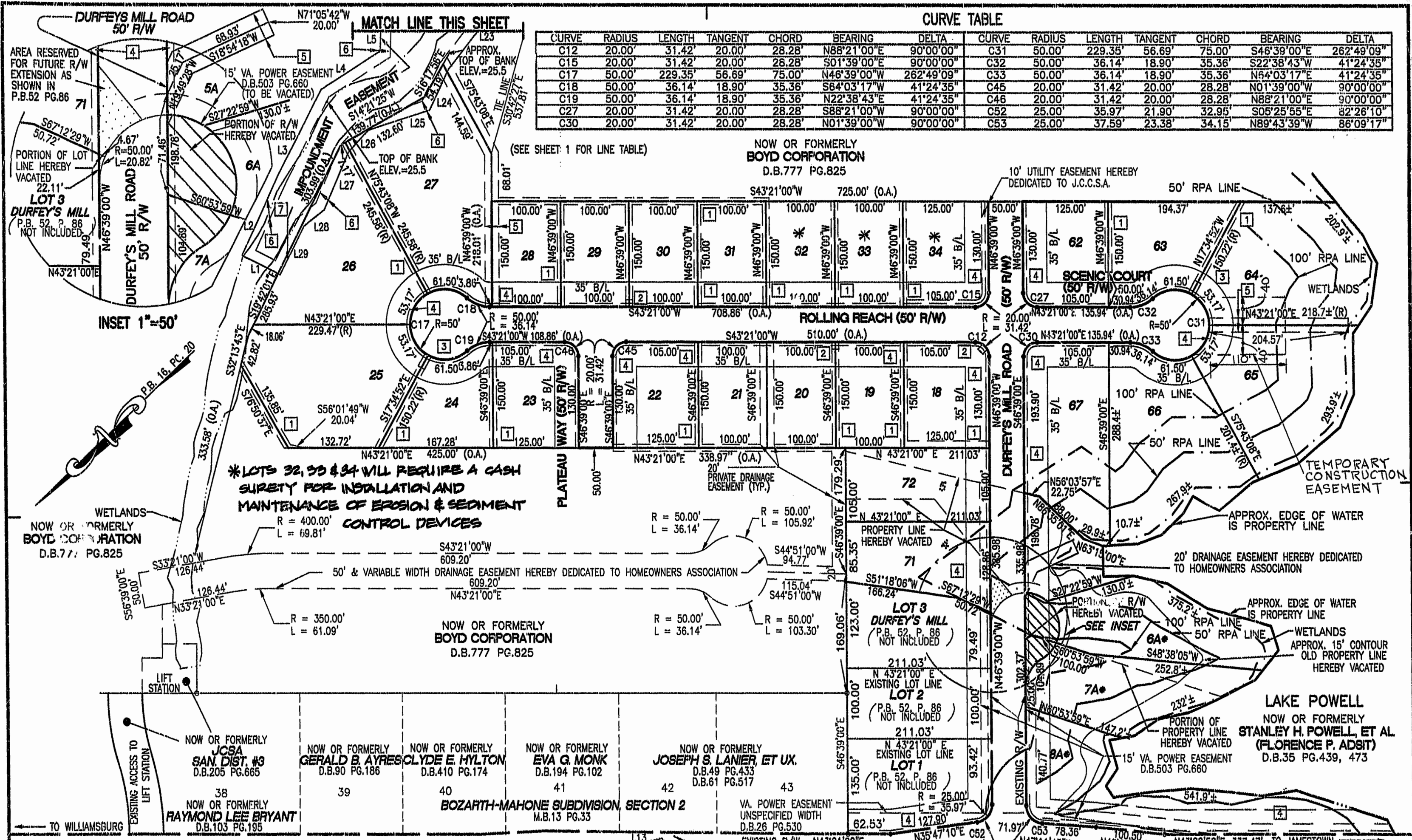
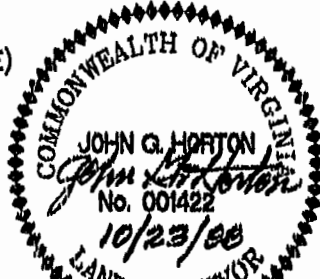
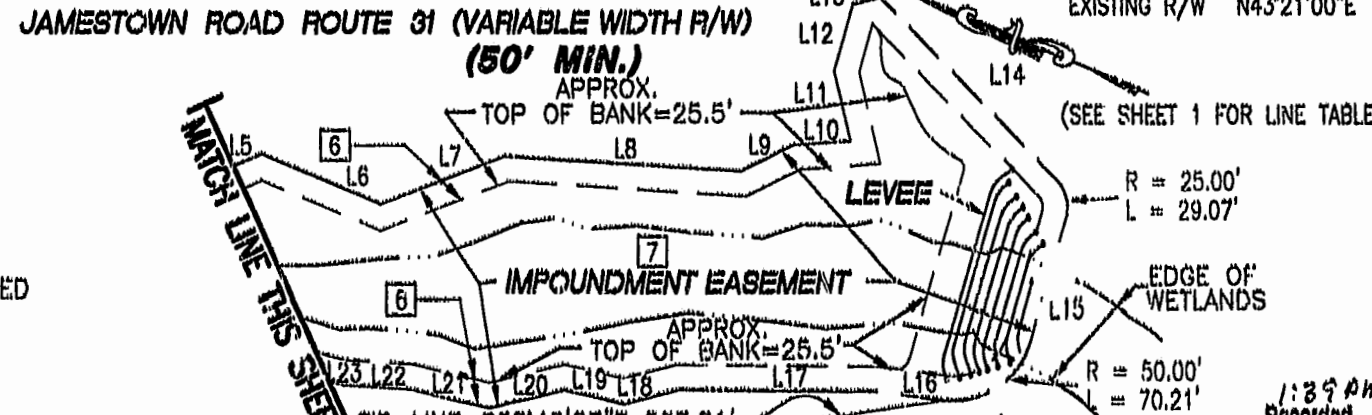


CURVE	RADIUS	LENGTH	TANGENT	CHORD	BEARING	DELTA	CURVE	RADIUS	LENGTH	TANGENT	CHORD	BEARING	DELTA
C12	20.00'	31.42'	20.00'	28.28'	N88°21'00"E	90°00'00"	C31	50.00'	229.35'	56.69'	75.00'	S46°39'00"E	262°49'09"
C15	20.00'	31.42'	20.00'	28.28'	S01°39'00"E	90°00'00"	C32	50.00'	36.14'	18.90'	35.36'	S22°38'43"W	41°24'35"
C17	50.00'	229.35'	56.69'	75.00'	N46°39'00"W	262°49'09"	C33	50.00'	36.14'	18.90'	35.36'	N64°03'17"E	41°24'35"
C18	50.00'	36.14'	18.90'	35.36'	S64°03'17"W	41°24'35"	C45	20.00'	31.42'	20.00'	28.28'	N01°39'00"W	90°00'00"
C19	50.00'	36.14'	18.90'	35.36'	N22°38'43"E	41°24'35"	C46	20.00'	31.42'	20.00'	28.28'	N88°21'00"E	90°00'00"
C27	20.00'	31.42'	20.00'	28.28'	S88°21'00"W	90°00'00"	C52	25.00'	35.97'	21.90'	32.95'	S05°25'55"E	82°26'10"
C30	20.00'	31.42'	20.00'	28.28'	N01°39'00"W	90°00'00"	C53	25.00'	37.59'	23.38'	34.15'	N89°43'39"W	86°09'17"



- 1 10' PRIVATE DRAINAGE EASEMENT
- 2 10' x 10' VIRGINIA POWER EASEMENT.
- 3 10' x 20' VIRGINIA POWER EASEMENT.
- 4 5' UTILITY EASEMENT HEREBY DEDICATED JAMES CITY COUNTY SERVICES AUTHORITY
- 5 20' DRAINAGE EASEMENT HEREBY DEDICATED TO THE HOMEOWNER'S ASSOCIATION
- 6 15' MAINTENANCE EASEMENT HEREBY DEDICATED TO THE HOMEOWNER'S ASSOCIATION
- 7 IMPOUNDMENT EASEMENT HEREBY DEDICATED TO THE HOMEOWNER'S ASSOCIATION



* LOTS 6A, 7A & 8A TAKEN FROM PROPERTY LINE ADJUSTMENT PLAT FOR LOTS 5, 6, 7 & 8 DURFEYS MILL. RECORDED IN P.B. 71 PG. 6 & 7

SUBDIVISION OF LAKE POWELL POINTE
 PHASE ONE
 JAMESTOWN MAGISTERIAL DISTRICT
 JAMES CITY COUNTY, VIRGINIA
 SCALE: 1" = 100'
 OCT. 23, 1998
HORTON & DODD, P.C.
 SURVEYORS, ENGINEERS & PLANNERS
 CHESAPEAKE VIRGINIA 23323
 (757) 487-4535

PLAT RECORDED IN P.B. NO. 71 PAGE 6 & 7

