

MATCH TO SHEET 4

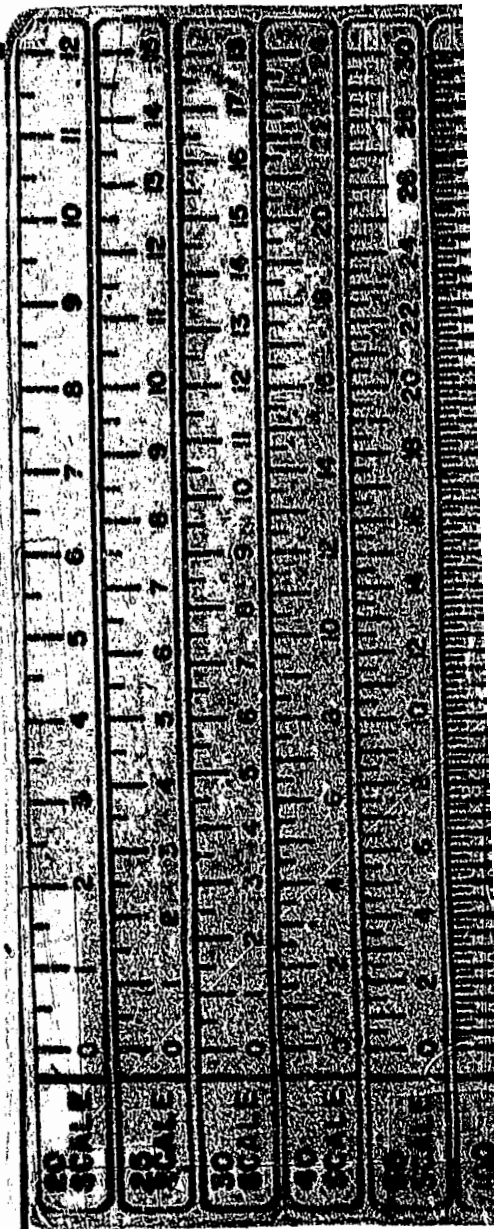
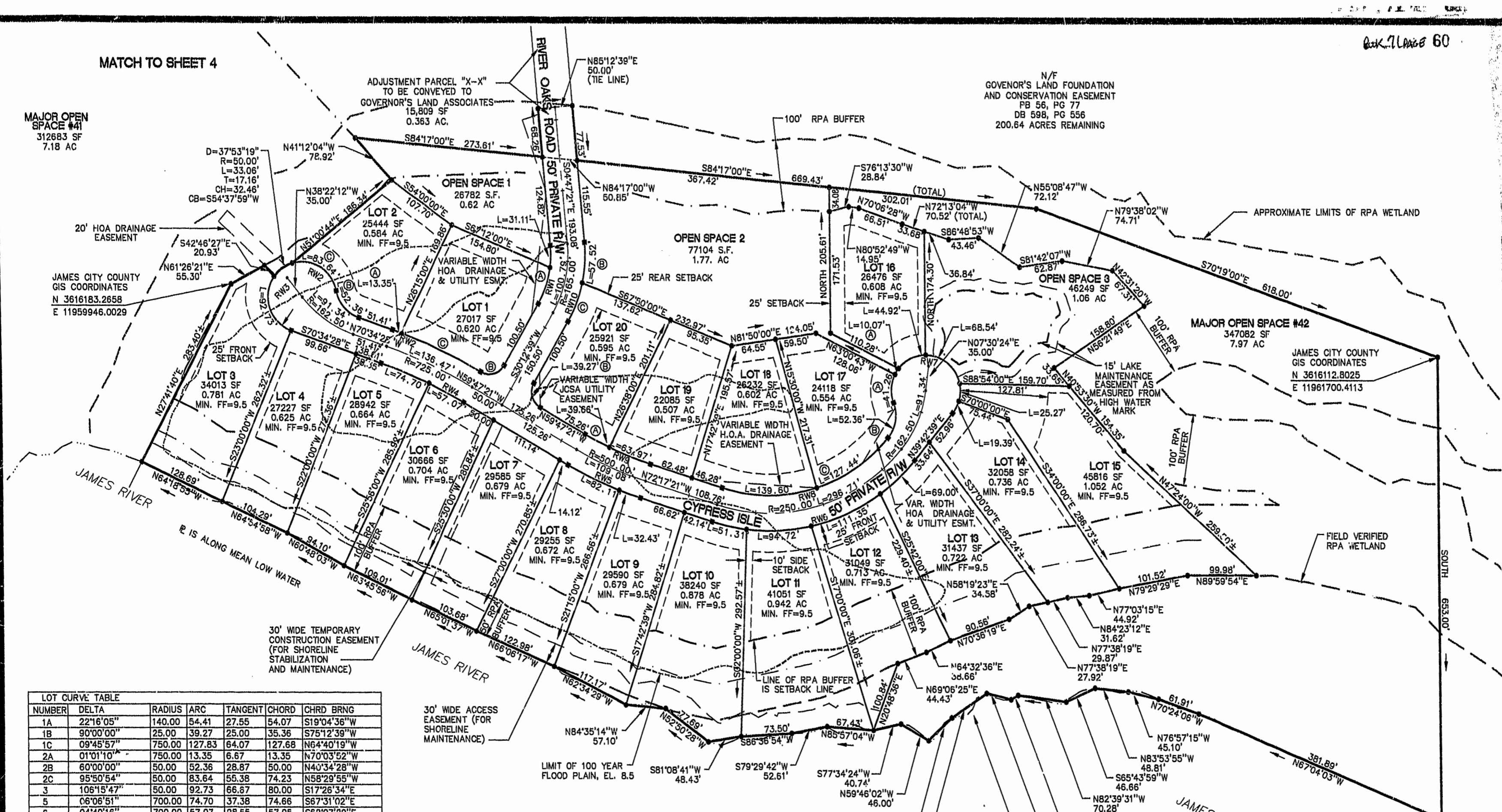
MAJOR OPEN SPACE #41
312663 SF
7.18 AC

N/F
GOVERNOR'S LAND FOUNDATION
AND CONSERVATION EASEMENT
FB 56, PG 77
DB 598, PG 556
200.64 ACRES REMAINING

ADJUSTMENT PARCEL "X-X"
TO BE CONVEYED TO
GOVERNOR'S LAND ASSOCIATES
15,809 SF
0.363 AC.

JAMES CITY COUNTY
GIS COORDINATES
N 3616183.2658
E 11959946.0029

JAMES CITY COUNTY
GIS COORDINATES
N 3616112.8025
E 11961700.4113

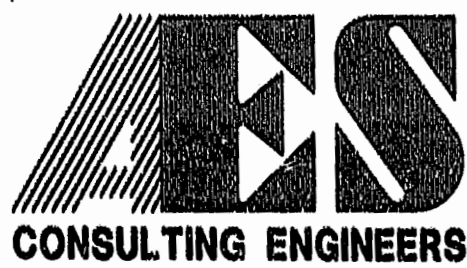
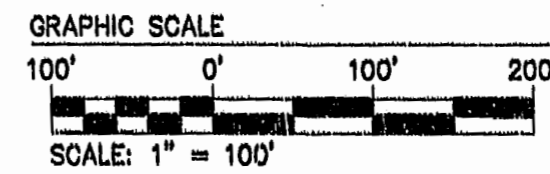


LOT CURVE TABLE	NUMBER	DELTA	RADIUS	ARC	TANGENT	CHORD	CHRD BRNG
1A	22'16'05"	140.00	54.41	27.55	54.07	S19'04'36"W	
1B	90'00'00"	25.00	39.27	25.00	35.36	S75'12'39"W	
1C	09'45'57"	750.00	127.83	64.07	127.68	N64'40'19"W	
2A	01'01'10"	750.00	13.35	6.67	13.35	N70'03'52"W	
2B	60'00'00"	50.00	52.36	28.87	50.00	N40'34'28"W	
2C	95'50'54"	50.00	83.64	55.38	74.23	N58'29'55"W	
3	106'18'47"	50.00	92.73	66.87	80.00	S17'26'34"E	
5	06'06'51"	700.00	74.70	37.38	74.66	S67'31'02"E	
6	04'40'16"	700.00	57.07	28.55	57.05	S62'07'29"E	
8	08'57'39"	525.00	82.11	41.14	82.02	S64'16'11"E	
9	03'32'21"	525.00	32.43	16.22	32.42	S70'31'11"E	
10	10'41'25"	275.00	51.31	25.73	51.24	S77'38'04"E	
11	19'44'05"	275.00	94.72	47.83	94.25	N87'09'11"E	
12	23'11'57"	275.00	111.35	56.45	110.59	N63'41'10"E	
13	14'22'33"	275.00	69.00	34.66	68.82	N46'3'55"E	
14	22'13'02"	50.00	19.39	9.82	19.27	N28'36'08"E	
15	28'57'18"	50.00	25.27	12.91	25.00	N03'00'58"E	
16	51'28'29"	50.00	44.92	24.10	43.42	S64'15'45"W	
17A	47'16'38"	50.00	41.26	21.88	40.10	S03'20'58"W	
17B	60'00'00"	50.00	52.36	28.87	50.00	S09'42'39"W	
17C	32'27'06"	225.00	127.44	65.48	125.74	S55'56'12"W	
18	35'32'54"	225.00	139.60	72.13	137.37	S89'56'12"W	
19	07'42'58"	475.00	63.97	32.03	63.92	N68'25'52"W	
20A	04'47'02"	475.00	39.66	19.84	39.65	N62'10'52"W	
20B	90'00'00"	25.00	39.27	25.00	35.36	N14'47'21"W	
20C	17'39'12"	190.00	58.54	29.50	58.31	N21'23'03"E	
OPEN1	12'43'55"	140.00	31.11	15.62	31.05	S01'34'37"W	
OPEN2A	11'32'14"	50.00	10.07	5.05	10.05	S32'45'24"W	
OPEN2B	17'20'48"	190.00	57.52	28.98	57.30	N03'53'03"E	
OPEN3	78'32'19"	50.00	68.54	40.88	63.30	N50'43'51"W	

RIGHT-OF-WAY CURVE TABLE	NUMBER	DELTA	RADIUS	ARC	TANGENT	CHORD	CHRD BRNG
RW1	35'00'00"	140.00	85.52	44.14	84.20	S12'42'39"W	
RW2	10'47'07"	750.00	141.18	70.80	140.97	N65'10'54"W	
RW3	24'00'00"	50.00	209.43	86.60	209.43	S49'25'32"W	
RW4	10'47'07"	700.00	131.77	66.08	131.57	S68'10'54"E	
RW5	12'30'00"	525.00	114.54	57.50	114.31	S66'02'21"E	
RW6	68'00'00"	275.00	326.38	185.49	307.56	N73'42'39"E	
RW7	24'00'00"	50.00	209.45	86.60	209.45	N80'17'21"W	
RW8	68'00'00"	225.00	267.04	181.76	225.00	S73'42'39"W	
RW9	12'30'00"	475.00	103.63	52.02	103.42	N66'02'21"W	
RW10	35'00'00"	190.00	116.06	59.91	114.27	N12'42'39"E	

NOTE:
 1. WETLANDS AND LANDS WITHIN RESOURCE PROTECTION AREAS SHALL REMAIN IN A NATURAL UNDISTURBED STATE EXCEPT FOR THOSE ACTIVITIES PERMITTED BY SECTION 23-9(C)(1) OF THE JAMES CITY COUNTY CODE.
 2. MAJOR OPEN SPACE #41 (7.18 ACRES), MAJOR OPEN SPACE #42 (7.97 ACRES), MAJOR OPEN SPACE #47 (1.68 ACRES), OPEN SPACE #1 (0.62 ACRES), OPEN SPACE #2 (1.77 ACRES, AND OPEN SPACE #3 (1.06 ACRES) ARE CONTAINED WITHIN A NATURAL OPEN SPACE EASEMENT. NATURAL OPEN SPACE EASEMENTS SHALL REMAIN IN A NATURAL, UNDISTURBED STATE EXCEPT FOR THOSE ACTIVITIES REFERENCED

PLAT RECORDED IN
 P.B. NO. 21 PAGE 58-62
 Recorded 30 day of December 1998
 DOCUMENT 9800 255969 3:57
 Helene Steward Clerk



5248 Olde Towne Road, Suite 1
 Williamsburg, Virginia 23188
 (757) 253-0040
 Fax (757) 220-8994

PLAT OF SUBDIVISION AND BOUNDARY LINE ADJUSTMENT
 CYPRESS ISLE
THE GOVERNOR'S LAND
At Two Rivers
 POWHATAN DISTRICT JAMES CITY COUNTY VIRGINIA



No.	DATE	REVISION / COMMENT / NOTE	BY
1	12/98	REVISE EASEMENT AND SETBACKS ON LOTS 6 AND 7	VMB

Designed	Drawn
VMB	KEG
Scale	Date
1"=100'	11/98
Project No.	
7173-4-2	
Drawing No.	
3 OF 4	