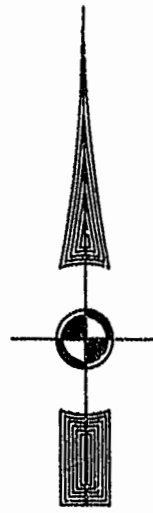
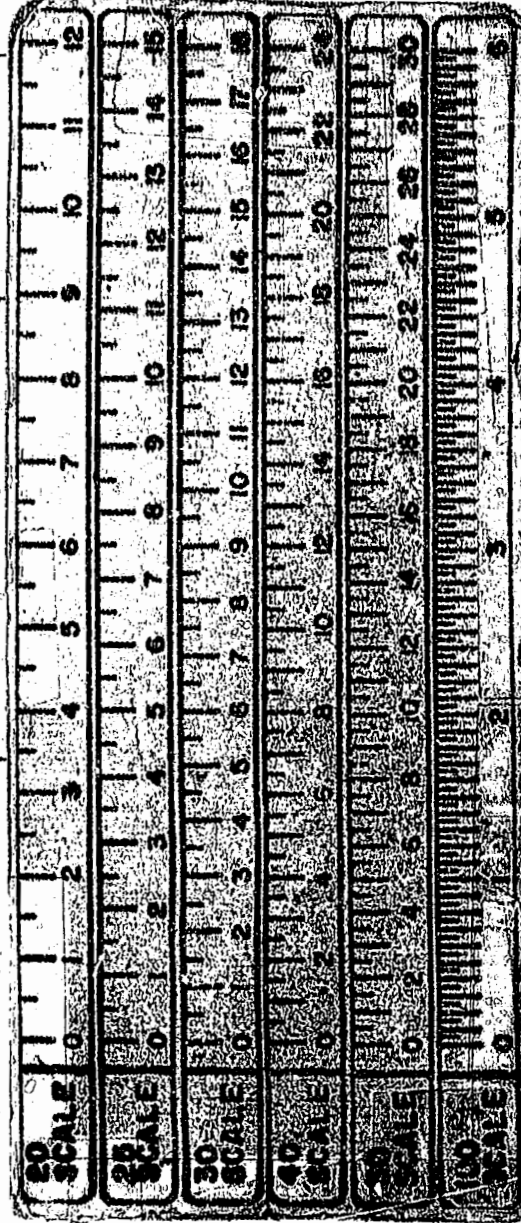


EXIST. 20' JAMES CITY COUNTY SERVICE AUTHORITY SAN. SEWER EASEMENT AS SHOWN IN AS-BUILT LOCATION. D.B. 141 - PG. 388

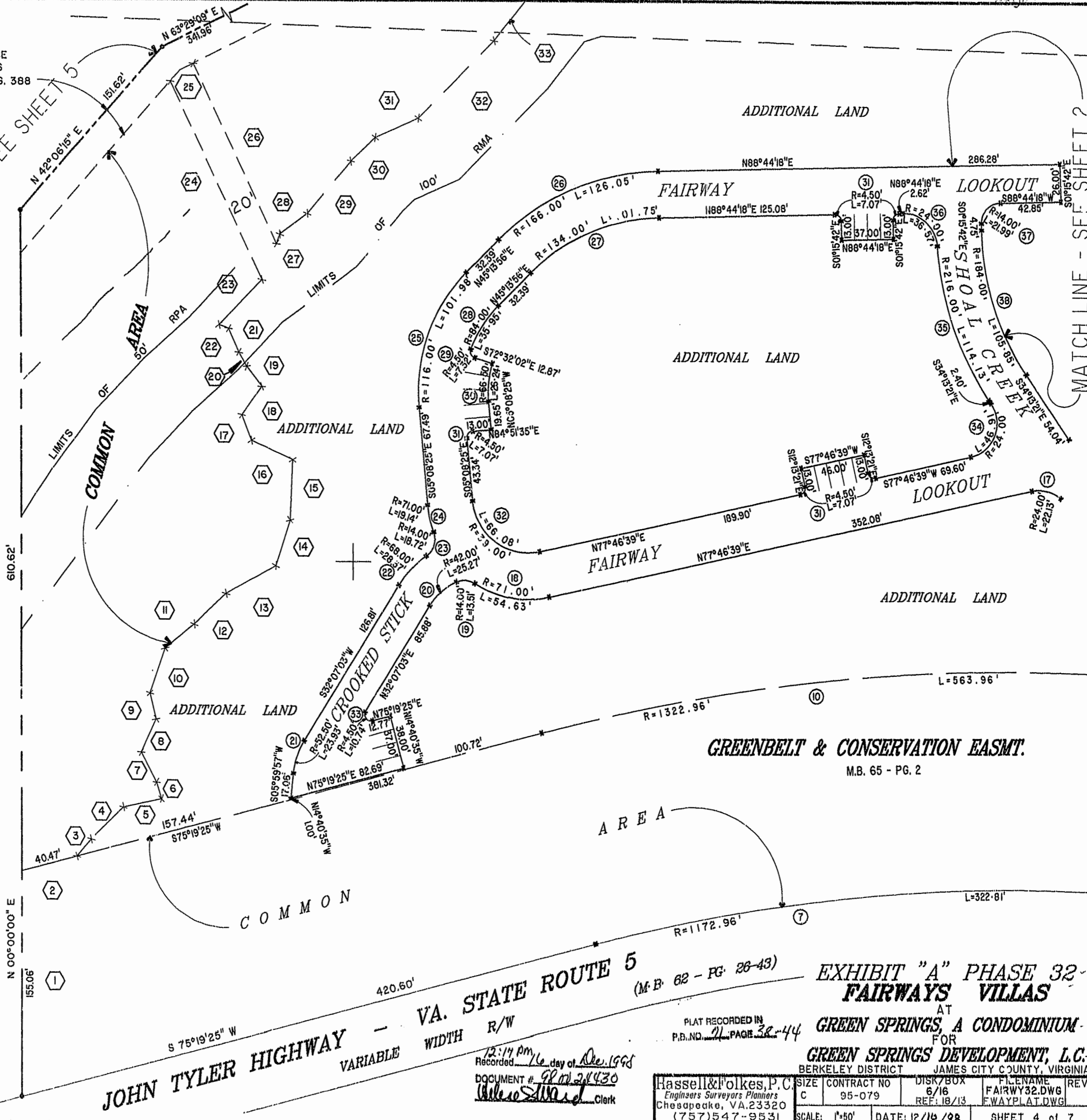


MATCH LINE - SEE SHEET 5

MATCH LINE - SEE SHEET 2



46-1-01-0-0001
"GREENSPRINGS PLANTATION"
(DB 322, 76 254)



GREENBELT & CONSERVATION EASMT.
M.B. 65 - PG. 2

VA. STATE ROUTE 5 (M.B. 62 - PG. 26-43)
R/W
VARIABLE WIDTH
JOHN TYLER HIGHWAY

EXHIBIT "A" PHASE 32 - FAIRWAYS VILLAS
AT GREEN SPRINGS, A CONDOMINIUM - FOR GREEN SPRINGS DEVELOPMENT, L.C.
BERKELEY DISTRICT JAMES CITY COUNTY, VIRGINIA

Recorded 12:14 pm 16 day of Dec. 1998
DOCUMENT # 98-01-21430
Walter S. Ward Clerk

PLAT RECORDED IN P.D. NO. 21 PAGE 32-44

Hassell & Polkes, P.C. Engineers Surveyors Planners Chesapeake, VA. 23320 (757)547-9531	SIZE CONTRACT NO C 95-079	DISK/BOX 6/16 REF: 18/13	FILENAME FAIRWAY32.DWG FWAYPLAT.DWG	REV.
SCALE: 1"=50'	DATE: 12/16/98	SHEET 4 of 7		