

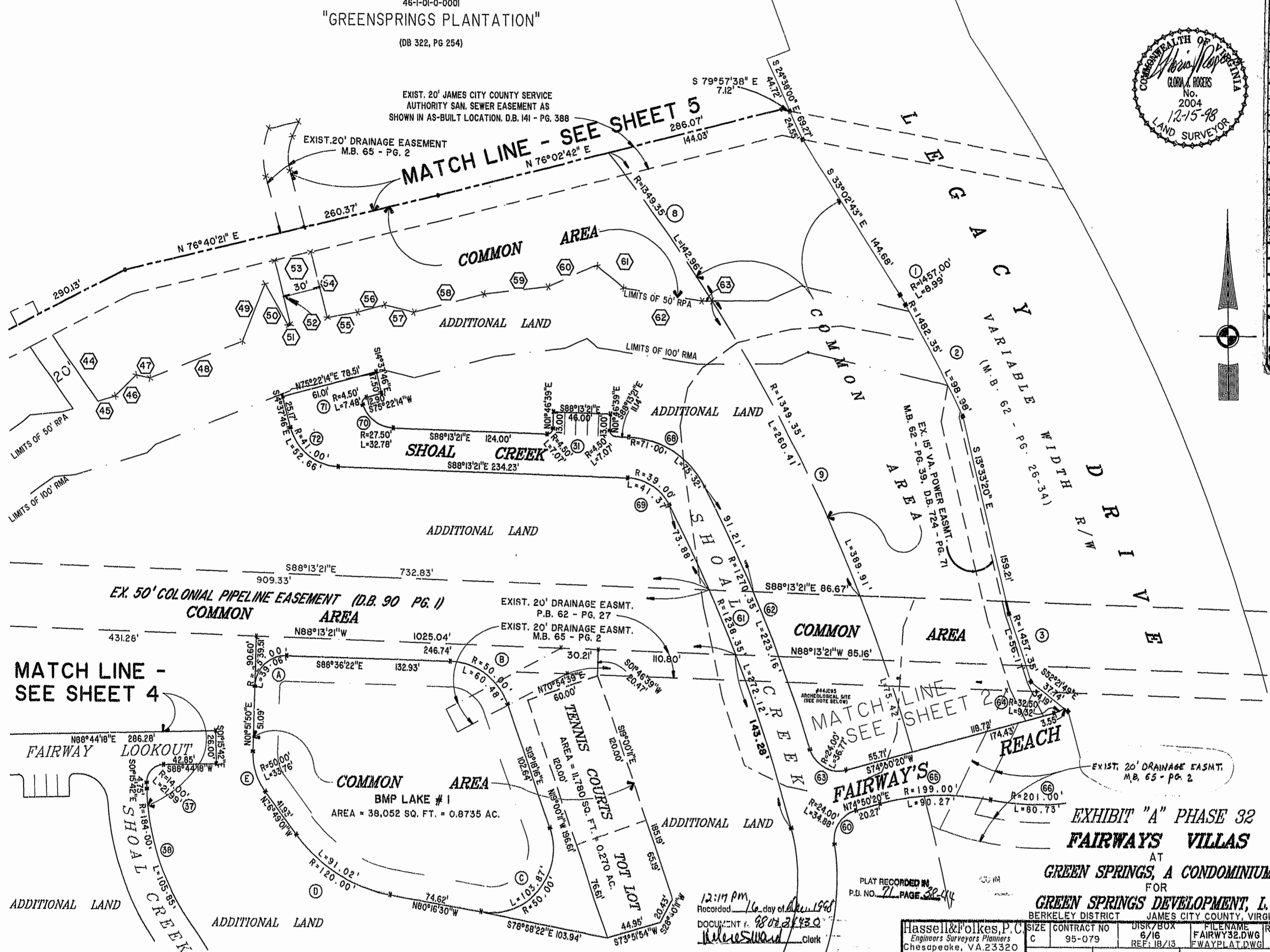
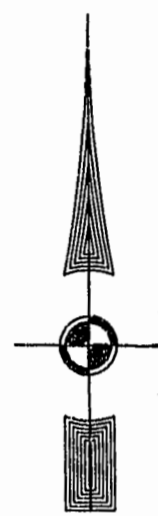
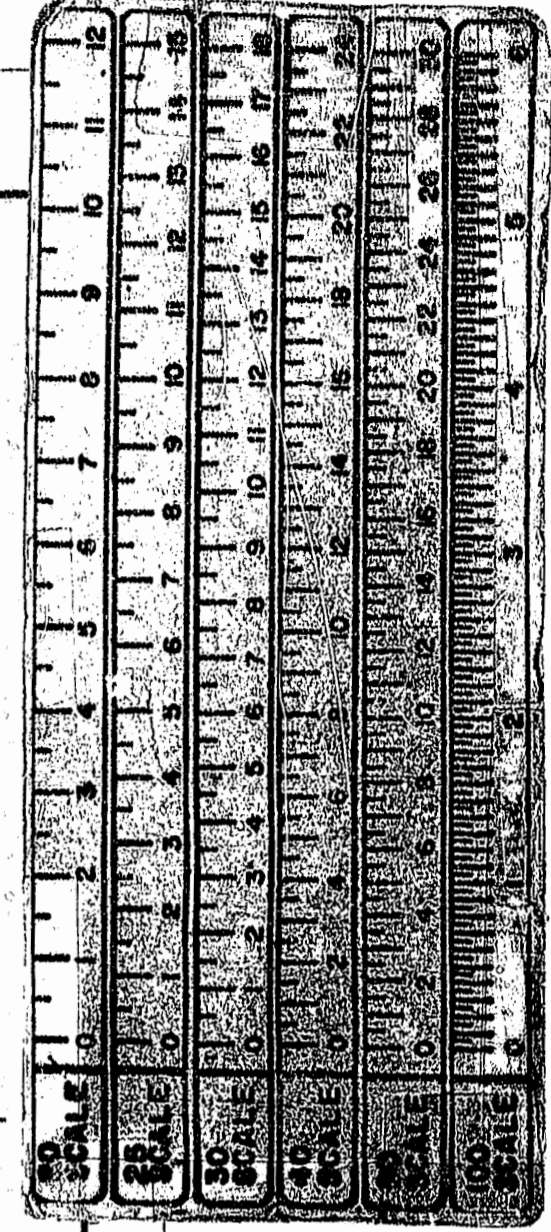
Ready 12-15-98

46-1-01-0-0001  
"GREENSPRINGS PLANTATION"  
(DB 322, PG 254)

EXIST. 20' JAMES CITY COUNTY SERVICE  
AUTHORITY SAN. SEWER EASEMENT AS  
SHOWN IN AS-BUILT LOCATION. D.B. 141 - PG. 388

EXIST. 20' DRAINAGE EASEMENT  
M.B. 65 - PG. 2

MATCH LINE - SEE SHEET 5



MATCH LINE - SEE SHEET 4

MATCH LINE - SEE SHEET 2

COMMON AREA  
BMP LAKE # 1  
AREA = 38,052 SQ. FT. = 0.8735 AC.

TENNIS COURTS  
TOTAL LOT  
AREA = 17,780 SQ. FT. = 0.405 AC.

EXHIBIT "A" PHASE 32  
FAIRWAYS VILLAS  
AT  
GREEN SPRINGS, A CONDOMINIUM  
FOR  
GREEN SPRINGS DEVELOPMENT, L.C.  
BERKELEY DISTRICT JAMES CITY COUNTY, VIRGINIA

12:17 PM  
Recorded 16 day of Dec 1998  
DOCUMENT # 98022430  
Hassell & Folkes, P.C.  
Engineers Surveyors Planners  
Chesapeake, VA 23320  
(757) 547-9531

PLAT RECORDED IN  
P.B. NO. 71 PAGE 38-40

Hassell & Folkes, P.C. Engineers Surveyors Planners Chesapeake, VA 23320 (757) 547-9531	SIZE CONTRACT NO C 95-079	DISK/BOX 6/16 REF: 18/13	FILENAME FAIRWY32.DWG FWAYPLAT.DWG	REV. 1
--	------------------------------	--------------------------------	--	-----------