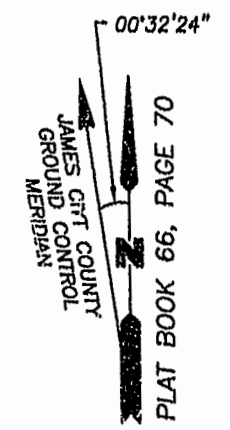


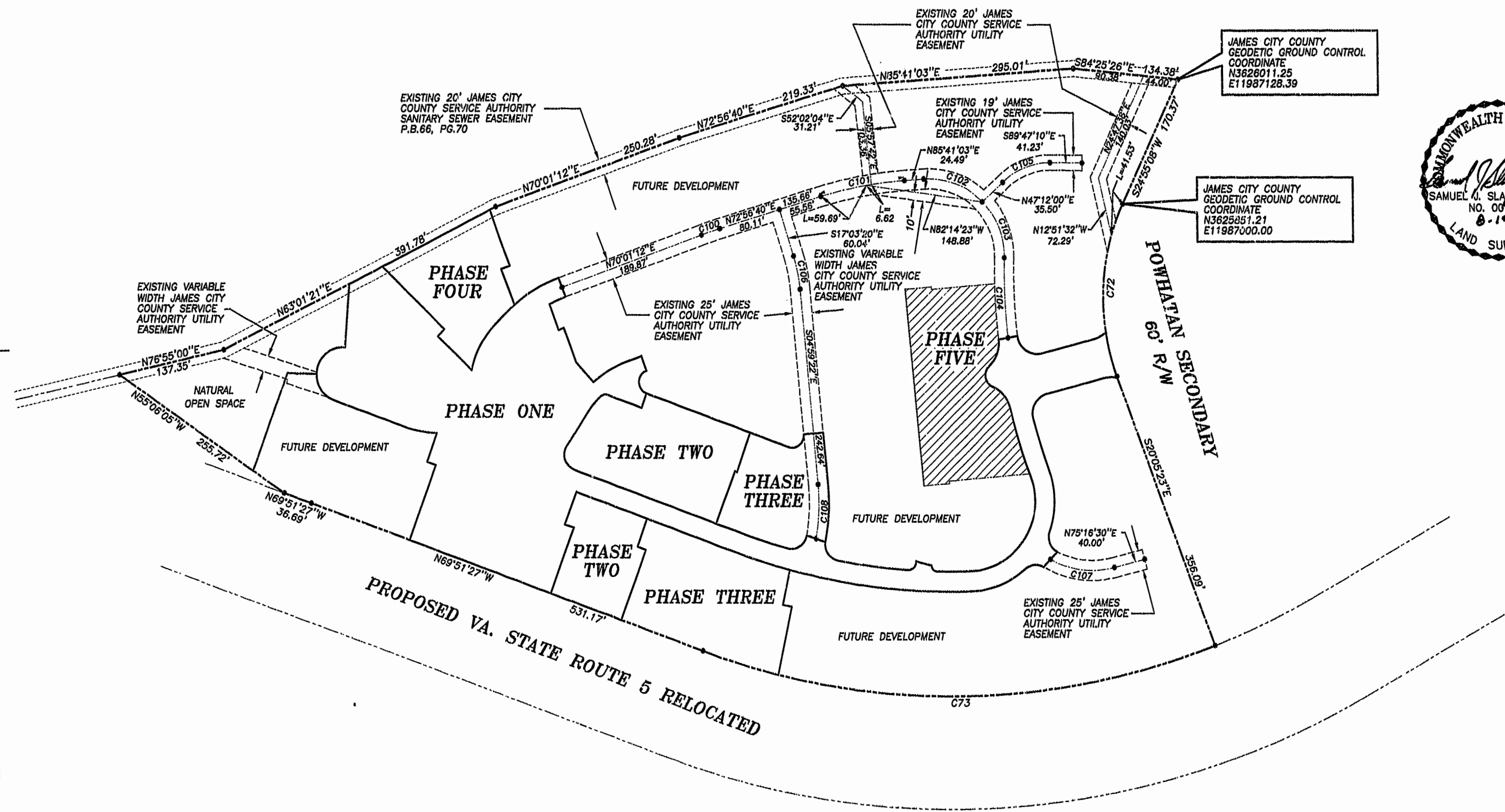
PLAT OF SUBDIVISION
WATERFORD
 AT
POWHATAN SECONDARY
 PHASE FIVE
 BERKELEY DISTRICT
 JAMES CITY COUNTY, VIRGINIA

DATE: 8/19/98 SHEET 2 OF 3 SCALE: 1"=100'
 PROJECT NO: 97-008 DRAWN BY: CADD

SA SLEDD & ASSOCIATES, P.C.
 ENGINEERS PLANNERS SURVEYORS
 11832 ROCK LANDING DRIVE, SUITE 203
 NEWPORT NEWS, VIRGINIA 23606
 (757) 873-3388

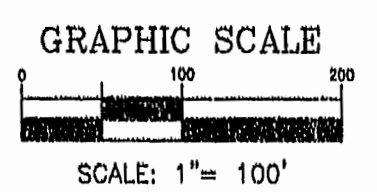
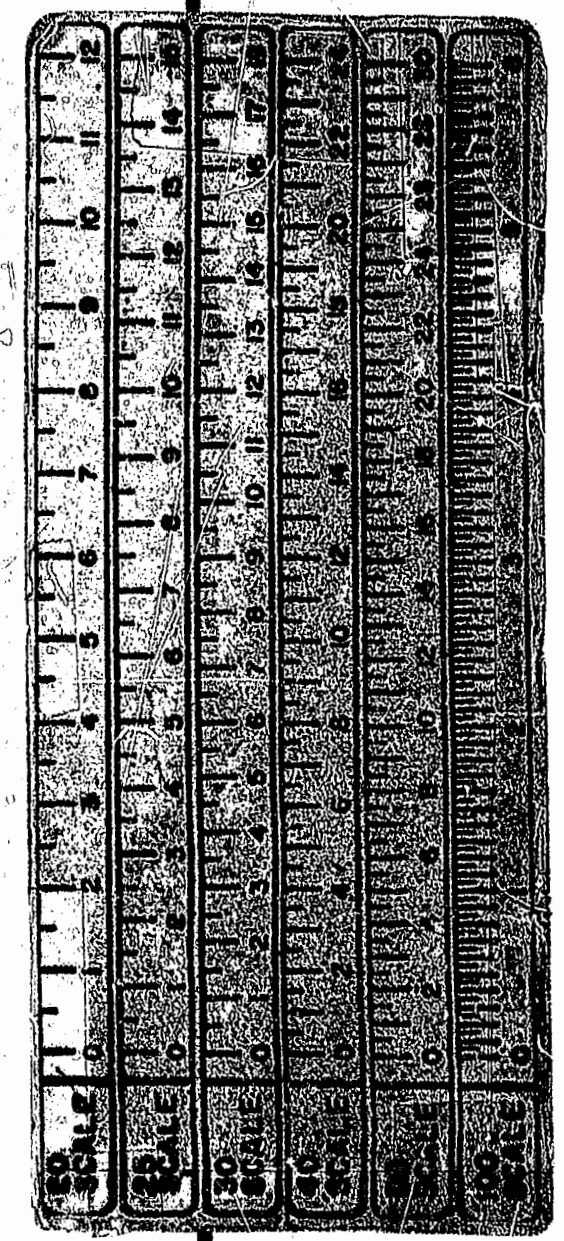
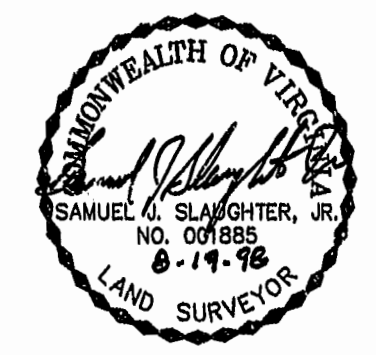


NOW OR FORMERLY
 POWHATAN ENTERPRISES, INC.



JAMES CITY COUNTY
 GEODETIC GROUND CONTROL
 COORDINATE
 N3628011.25
 E11987128.39

JAMES CITY COUNTY
 GEODETIC GROUND CONTROL
 COORDINATE
 N3625851.21
 E11987000.00



PLAT RECORDED IN
 P.B. NO. 1998-008 PAGE 2

CURVE DATA

NUMBER	RADIUS	DELTA	ARC	TANGENT	CHORD	CHORD BEARING
C72	280.00	45°00'31"	219.95	116.00	214.34	S02°24'52"W
C73	924.91	41°26'14"	668.91	349.84	654.43	S89°25'26"W
C100	487.80	02°25'28"	24.88	12.44	24.88	N71°28'58"E
C101	487.80	12°44'23"	108.40	54.42	108.17	N79°18'51"E
C102	95.09	49°43'07"	82.44	44.02	79.87	S89°27'24"E
C103	95.09	41°33'55"	88.92	36.05	87.42	S19°12'44"E
C104	722.49	07°53'06"	99.43	49.79	99.35	S02°22'19"E
C105	88.87	44°14'38"	67.16	35.35	65.50	N68°05'31"E
C106	200.00	12°03'58"	42.12	21.14	42.04	S11°01'21"E
C107	112.80	43°03'30"	84.84	44.38	82.97	S83°11'45"E
C108	280.00	18°30'38"	67.88	34.05	67.47	S02°45'57"W

10:30 AM 30 days Oct 1998
 Recorded
 DOCUMENT # 980230906
 Release/Share Clerk