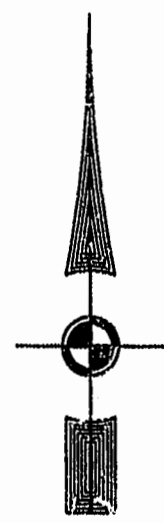


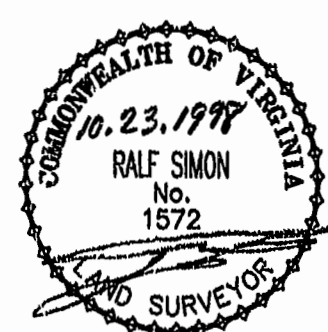
EXIST. 20' JAMES CITY COUNTY SERVICE AUTHORITY SAN. SEWER EASEMENT AS SHOWN IN AS-BUILT LOCATION. D.B. 141 - PG. 388



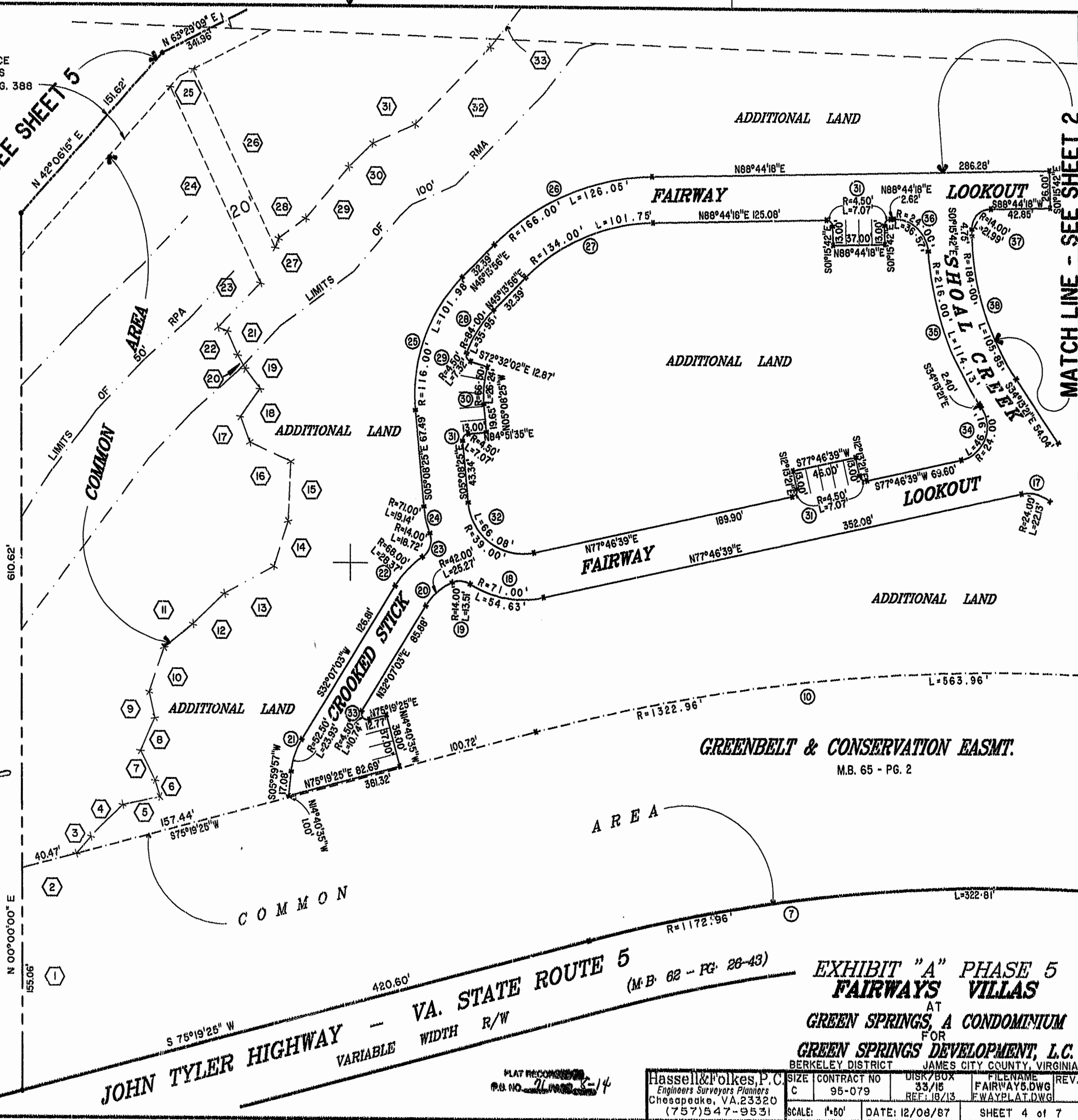
MATCH LINE - SEE SHEET 5

MATCH LINE - SEE SHEET 2

46-1-01-0-0001
"GREENSPRINGS PLANTATION"
(DB 322, PG 254)



12:24 pm
Recorded 21 day Oct 1998
DOCUMENT # 98020515
Wendy Wood Clerk



JOHN TYLER HIGHWAY - VA. STATE ROUTE 5
VARIABLE WIDTH R/W
(M.B. 62 - PG. 28-43)

GREENBELT & CONSERVATION EASMT.
M.B. 65 - PG. 2

EXHIBIT "A" PHASE 5
FAIRWAYS VILLAS
AT
GREEN SPRINGS, A CONDOMINIUM
FOR
GREEN SPRINGS DEVELOPMENT, L.C.
BERKELEY DISTRICT JAMES CITY COUNTY, VIRGINIA

Hassell & Folkes, P.C. Engineers Surveyors Planners Chesapeake, VA. 23320 (757) 547-9531	SIZE CONTRACT NO C 95-079	DATE: 12/08/87	DISK/BOX 33/15 REF: 18/13	FILENAME FAIRWAY5.DWG FWAYPLAT.DWG	REV. SHEET 4 of 7
---	------------------------------	----------------	---------------------------------	--	----------------------

PLAT RECORD # 98020515
P.B. NO. 71