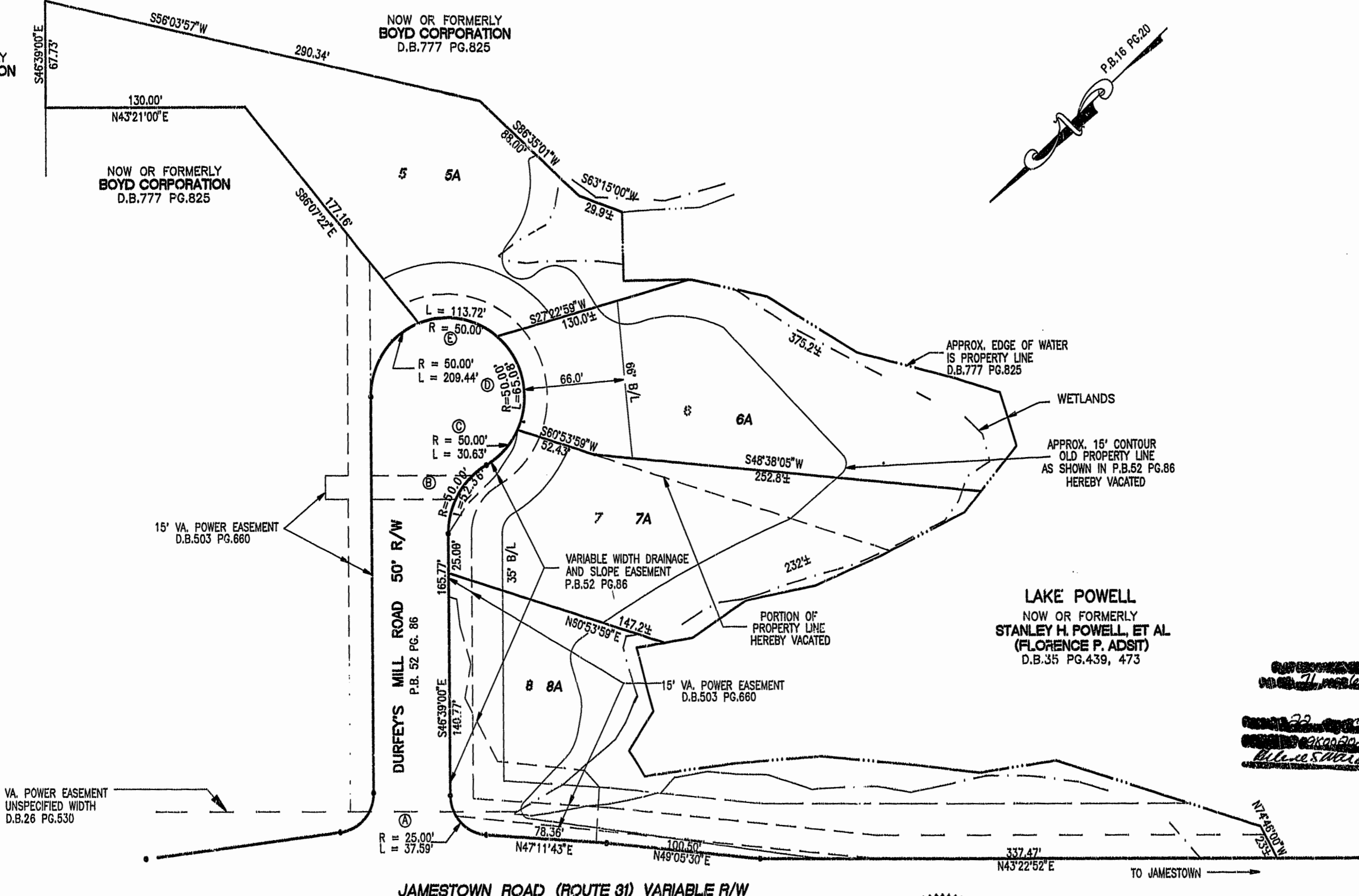
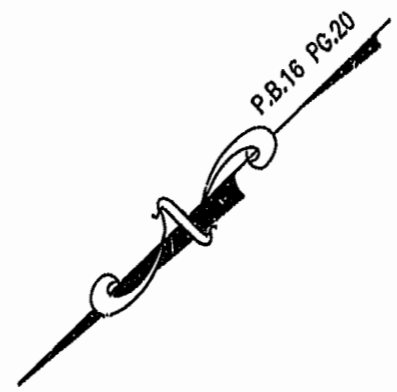


NOW OR FORMERLY
BOYD CORPORATION
D.B.777 PG.825

NOW OR FORMERLY
BOYD CORPORATION
D.B.777 PG.825

NOW OR FORMERLY
BOYD CORPORATION
D.B.777 PG.825



15' VA. POWER EASEMENT
D.B.503 PG.660

DURFEY'S MILL ROAD 50' R/W
P.B. 52 PG. 86

VARIABLE WIDTH DRAINAGE
AND SLOPE EASEMENT
P.B.52 PG.86

15' VA. POWER EASEMENT
D.B.503 PG.660

LAKE POWELL
NOW OR FORMERLY
STANLEY H. POWELL, ET AL
(FLORENCE P. ADSIT)
D.B.35 PG.439, 473

VA. POWER EASEMENT
UNSPECIFIED WIDTH
D.B.26 PG.530

JAMESTOWN ROAD (ROUTE 31) VARIABLE R/W

CURVE TABLE

CURVE	RADIUS	LENGTH	TANGENT	CHORD	BEARING	DELTA
A	25.00'	37.59'	23.38'	34.15'	S89°43'39\"E	86°09'17\"
B	50.00'	52.36'	28.87'	50.00'	S16°39'00\"E	60°00'00\"
C	50.00'	30.63'	15.81'	30.16'	S04°12'10\"E	35°08'14\"
D	50.00'	65.08'	38.08'	60.59'	S59°02'43\"E	74°34'51\"
E	50.00'	113.72'	108.00'	90.75'	N18°30'26\"E	130°18'52\"



PROPERTY LINE ADJUSTMENT
PLAT

FOR
LOTS 5, 6, 7 AND 8
DURFEY'S MILL

JAMESTOWN MAGISTERIAL DISTRICT
JAMES CITY COUNTY, VIRGINIA

SCALE: 1" = 50' NOV. 4, 1997

HORTON & DODD, P.C.
SURVEYORS, ENGINEERS & PLANNERS
CHESAPEAKE VIRGINIA 23323
(804) 487-4535