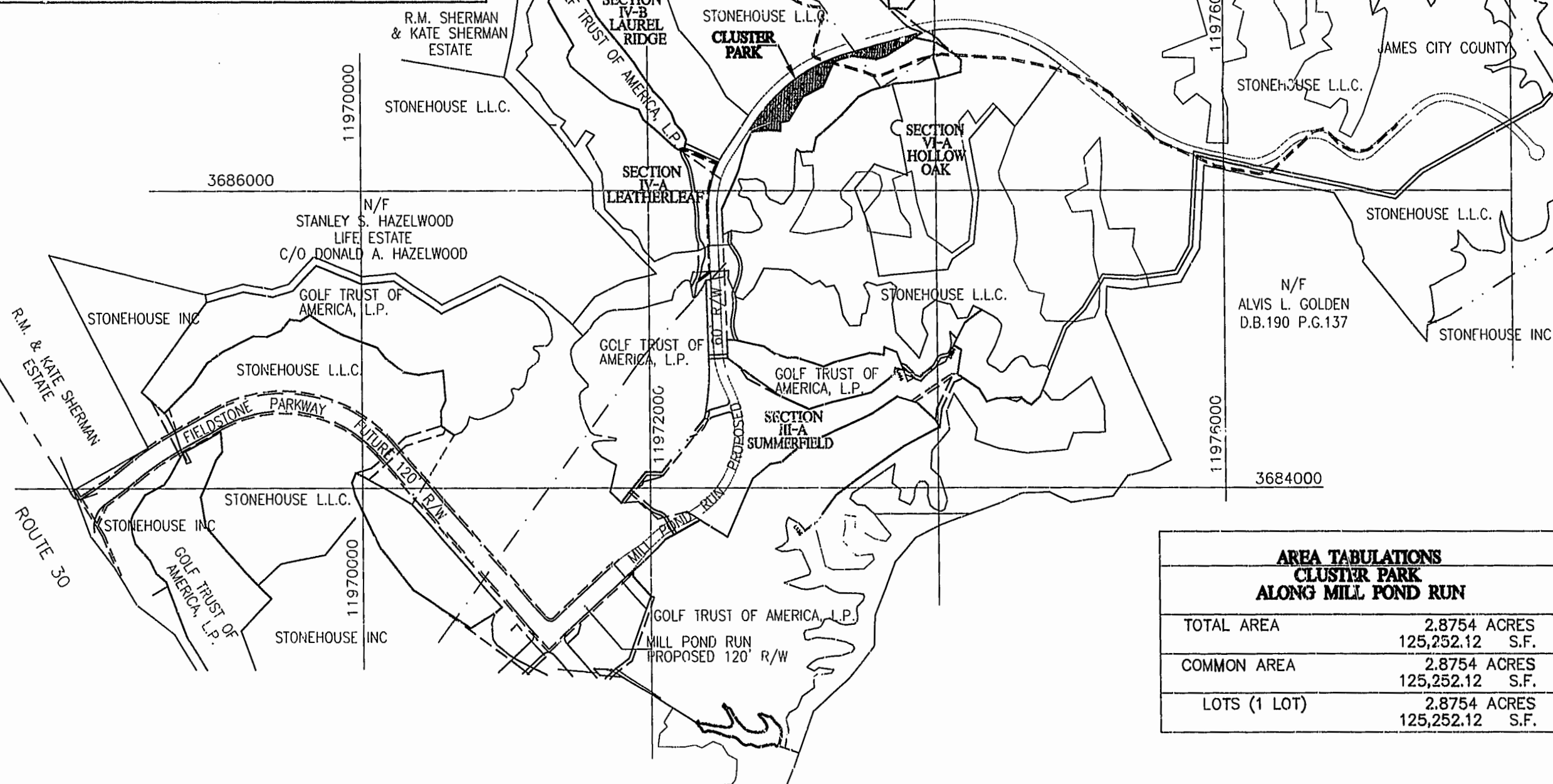


COPYRIGHT ADC THE MAP PEOPLE PERMITTED USE NO. 20298539
VICINITY MAP SCALE: 1" = 2000'



| AREA TABULATIONS CLUSTER PARK ALONG MILL POND RUN | | |
|---|--------------|-----------------|
| TOTAL AREA | 2.8754 ACRES | 125,252.12 S.F. |
| COMMON AREA | 2.8754 ACRES | 125,252.12 S.F. |
| LOTS (1 LOT) | 2.8754 ACRES | 125,252.12 S.F. |

NOTES :

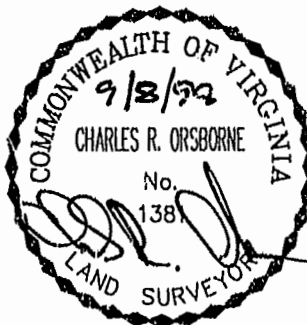
- THIS PLAT WAS BASED ON INFORMATION OF RECORD, INFORMATION PROVIDED BY THE OWNER AND INFORMATION PURSUANT TO AN ACTUAL SURVEY.
- THIS PROPERTY IS REFERENCED TO THE VIRGINIA STATE PLANE COORDINATE SYSTEM (SOUTH ZONE) "NAD 83".
- THIS PROPERTY IS ZONED PUD-R WITH PROFFERS.
- THIS PROPERTY IS SERVED BY PUBLIC WATER AND SEWER.
- THIS SUBDIVISION PLAT COMPLIES WITH THE PROFFERS APPLICABLE TO THE PROPERTY. RECORDED IN JAMES CITY COUNTY D.B. 747, PG. 476.
- UTILITY AND OTHER EASEMENTS ARE RESERVED PURSUANT TO THE DECLARATION RECORDED IN DOCUMENT NO. 97-0015414, IN THE CLERK'S OFFICE OF THE CIRCUIT COURT OF JAMES CITY COUNTY AS THE SAME MAY BE AMENDED OR SUPPLEMENTED FROM TIME TO TIME.
- ALL UTILITY EASEMENTS SHOWN ON THIS PLAT ARE HEREBY DEDICATED TO THE JAMES CITY SERVICE AUTHORITY.
- ALL DRAINAGE EASEMENTS SHOWN ON THIS PLAT ARE HEREBY DEDICATED TO STONEHOUSE, L.L.C.
- THE VIRGINIA DEPARTMENT OF TRANSPORTATION IS HELD HARMLESS FROM ALL RESPONSIBILITY OF STORMWATER MANAGEMENT FACILITIES.
- ALL LOTS ARE SERVED BY PUBLIC WATER AND SANITARY SEWER.
- ALL OTHER UTILITIES, ELECTRIC POWER, TELEPHONE, NATURAL GAS, ETC. SHALL BE PLACED UNDERGROUND.
- COMMON AREAS ARE MORE PARTICULARLY DEFINED IN THE DECLARATION RECORDED IN DOCUMENT NO. 97-0015414, IN THE CLERK'S OFFICE OF THE CIRCUIT COURT OF JAMES CITY COUNTY.
- ALL IRRIGATION EASEMENTS SHOWN ON THIS PLAT WERE DEDICATED TO GOLF TRUST OF AMERICA, L.P. BY DOCUMENT NO. 97-0009626, RECORDED IN CIRCUIT COURT, WILLIAMSBURG / JAMES CITY COUNTY.
- WETLANDS AND LAND WITHIN RESOURCE PROTECTION AREAS SHALL REMAIN IN A NATURAL UNDISTURBED STATE EXCEPT FOR THOSE ACTIVITIES PERMITTED BY SECTION 23B-9C(1) OF THE JAMES CITY COUNTY CODE.

SURVEYOR'S CERTIFICATE

I HEREBY CERTIFY THAT TO THE BEST OF MY KNOWLEDGE OR BELIEF, THIS PLAT COMPLIES WITH ALL OF THE REQUIREMENTS OF THE BOARD OF SUPERVISORS AND ORDINANCES OF THE COUNTY OF JAMES CITY, VIRGINIA, REGARDING THE PLATTING OF SUBDIVISIONS WITHIN THE COUNTY.

DATE

NAME



OWNER'S CERTIFICATE

THE SUBDIVISION OF LAND AS SHOWN ON THIS PLAT IS WITH THE FREE CONSENT AND IN ACCORDANCE WITH THE DESIRE OF THE UNDERSIGNED OWNER(S), PROPRIETOR(S) AND OR TRUSTEE(S).

STONEHOUSE LIMITED LIABILITY COMPANY,
BY ITS ATTORNEY-IN-FACT:

STONEHOUSE MANAGEMENT COMPANY,
A VIRGINIA CORPORATION, PURSUANT TO SPECIAL POWER OF ATTORNEY DATED AUGUST 5, 1996 AND RECORDED IN THE CLERK'S OFFICE OF THE CIRCUIT COURT OF JAMES CITY COUNTY, VIRGINIA, DEED BOOK 802 AT PAGE 67
BY: W. Allen Ball DATE: 9/9/98
TITLE: W. ALLEN BALL, EXECUTIVE VICE PRESIDENT AND GENERAL MANAGER.

CERTIFICATE OF NOTARIZATION

COMMONWEALTH OF VIRGINIA:
CITY/COUNTY OF James City County
THE FOREGOING INSTRUMENT WAS ACKNOWLEDGE, SUBSCRIBED AND SWORN BEFORE ME THIS 9th DAY OF Sept, 1998
BY W. Allen Ball AS Exec Vice Manager OF STONEHOUSE MANAGEMENT COMPANY, A VIRGINIA CORPORATION, ON BEHALF OF THE CORPORATION AS ATTORNEY-IN-FACT ON BEHALF OF STONEHOUSE LIMITED LIABILITY COMPANY, A VIRGINIA LIMITED LIABILITY COMPANY.
MY COMMISSION EXPIRES: 9/30/98
(SIGNATURE) W. Allen Ball NOTARY PUBLIC

CERTIFICATE OF SOURCE OF TITLE

THE PROPERTY SHOWN ON THIS PLAT WAS CONVEYED TO STONEHOUSE LIMITED LIABILITY COMPANY, A VIRGINIA LIMITED LIABILITY COMPANY BY THE FOLLOWING DEEDS:

FROM STONEHOUSE INC., A VIRGINIA CORPORATION BY DEED DATED MARCH 12, 1996 AND RECORDED MARCH 20, 1996 IN THE OFFICE OF THE CLERK OF THE CIRCUIT COURT OF THE COUNTY OF JAMES CITY IN DEED BOOK 778, PAGE 810 AND

FROM GOLF TRUST OF AMERICA, L.P., A DELAWARE LIMITED PARTNERSHIP BY DEED DATED JUNE 6, 1997 AND RECORDED JUNE 20th, 1997 IN THE OFFICE OF THE CLERK OF THE CIRCUIT COURT OF THE COUNTY OF JAMES CITY AS DOCUMENT NO. 97-0009626 PLAT BOOK 66, PAGE. 80-88.

CERTIFICATE OF APPROVAL

THIS SUBDIVISION PLAT IS APPROVED BY THE UNDERSIGNED IN ACCORDANCE WITH EXISTING SUBDIVISION REGULATIONS AND MAY BE ADMITTED TO RECORD.

DATE 9/24/98 VIRGINIA DEPARTMENT OF TRANSPORTATION
DATE 9/24/98 SUBDIVISION AGENT OF JAMES CITY COUNTY

STATE OF VIRGINIA, COUNTY OF JAMES CITY

IN THE CLERK'S OFFICE OF THE CIRCUIT COURT
PLAT SHOWN HEREON WAS PRESENTED AND ADMITTED TO

RECORD THIS 16th DAY OF October, 1998

AS THE LAW DIRECTS.

CLERK: W. Allen Ball

PLAT BOOK, 70 PAGE NO. 99-100

PLAT RECORDED BY
P.B. NO. 20 PAGE 99-100

STONEHOUSE
SUBDIVISION PLAT
OF

**CLUSTER PARK
ALONG MILL POND RUN
BEING A SUBDIVISION
OF
STONEHOUSE LIMITED LIABILITY
COMPANY**

STONEHOUSE DISTRICT, JAMES CITY COUNTY
DATE: 09/04/98 SCALE: 1"=700'

SHEET 1 OF 2



Langley and McDonald, P.C.

Engineers - Surveyors - Planners
Landscape Architects - Environmental Consultants
VIRGINIA BEACH WILLIAMSBURG

Recorded 16 day of October, 1998
DOCUMENT # 980015815
Clerk