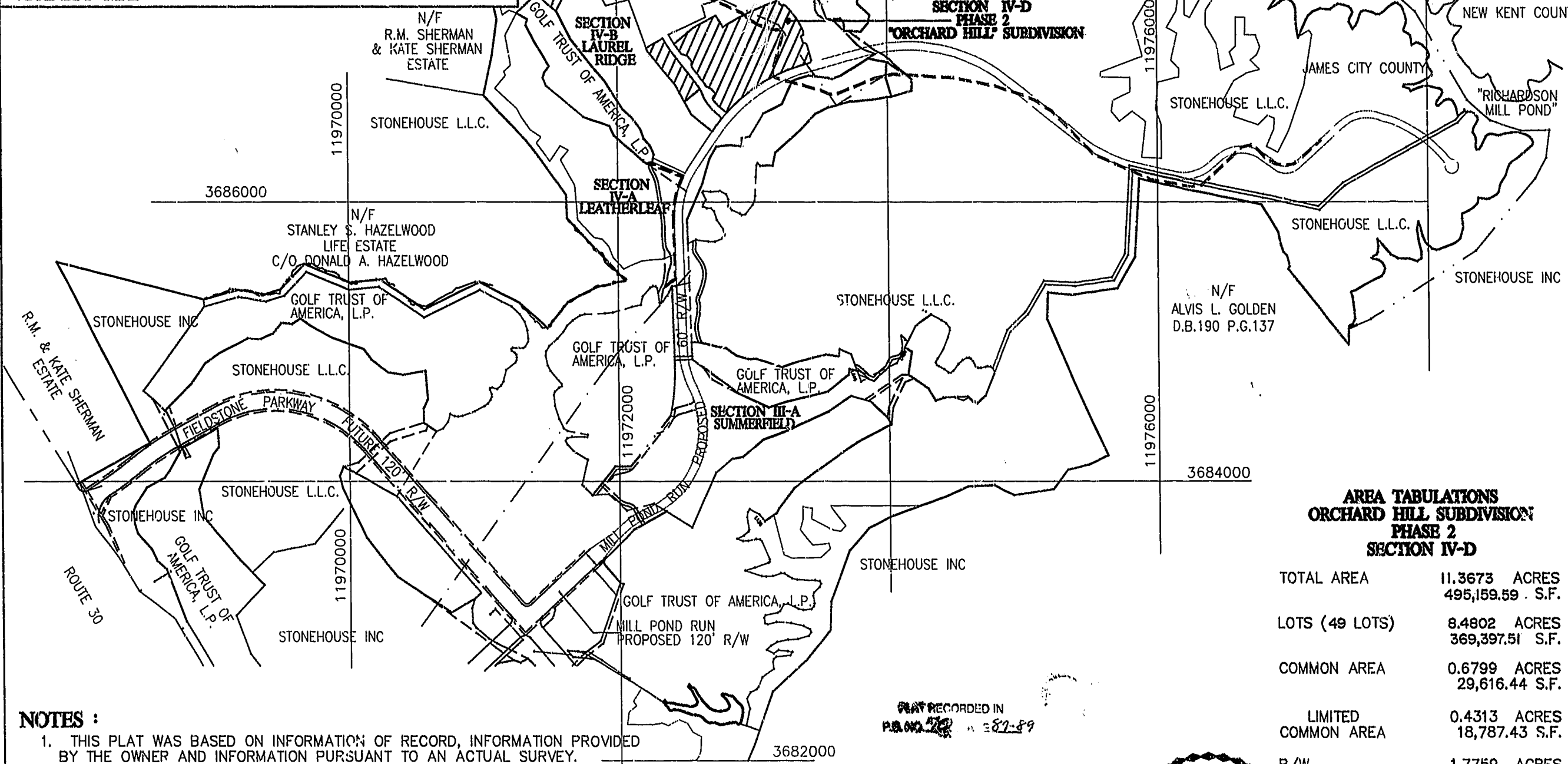


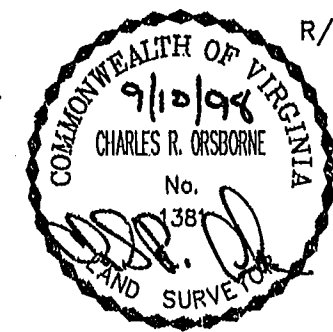
COPYRIGHT ADC THE MAP PEOPLE PERMITTED USE NO. 2029539
VICINITY MAP SCALE: 1" = 2000'



NOTES :

1. THIS PLAT WAS BASED ON INFORMATION OF RECORD, INFORMATION PROVIDED BY THE OWNER AND INFORMATION PURSUANT TO AN ACTUAL SURVEY.
2. THIS PROPERTY IS REFERENCED TO THE VIRGINIA STATE PLANE COORDINATE SYSTEM (SOUTH ZONE) "NAD 83".
3. THIS PROPERTY IS ZONED PUD-R WITH PROFFERS.
4. THIS PROPERTY IS SERVED BY PUBLIC WATER AND SEWER.
5. THIS SUBDIVISION PLAT COMPLIES WITH THE PROFFERS APPLICABLE TO THE PROPERTY, RECORDED IN JAMES CITY COUNTY D.B. 747, PG. 476.
6. SETBACK REQUIREMENTS FOR THE "ORCHARD HILL" SUBDIVISION ARE SPECIFIED IN THE DESIGN CRITERIA STANDARDS AND GUIDELINES FOR STONEHOUSE, VIRGINIA AS PREPARED BY STONEHOUSE LIMITED LIABILITY COMPANY, PUBLISHED BY THE ENVIRONMENTAL REVIEW COMMITTEE.
7. UTILITY AND OTHER EASEMENTS ARE RESERVED PURSUANT TO THE DECLARATION RECORDED IN DOCUMENT NO. 97-0015414, IN THE CLERK'S OFFICE OF THE CIRCUIT COURT OF JAMES CITY COUNTY AS THE SAME MAY BE AMENDED OR SUPPLEMENTED FROM TIME TO TIME.
8. ALL IRRIGATION EASEMENTS SHOWN ON THIS PLAT WERE DEDICATED TO GOLF TRUST OF AMERICA, L.P. BY DOCUMENT NO. 97-0009626, RECORDED IN CIRCUIT COURT, WILLIAMSBURG / JAMES CITY COUNTY.
9. ALL UTILITY EASEMENTS SHOWN ON THIS PLAT ARE HEREBY DEDICATED TO THE JAMES CITY SERVICE AUTHORITY.
10. ALL DRAINAGE EASEMENTS SHOWN ON THIS PLAT ARE HEREBY DEDICATED TO STONEHOUSE, L.L.C.
11. THE VIRGINIA DEPARTMENT OF TRANSPORTATION IS HELD HARMLESS FROM ALL RESPONSIBILITY OF STORMWATER MANAGEMENT FACILITIES.
12. ALL ROADS ARE HEREBY DEDICATED FOR PUBLIC STREET PURPOSES.
13. ALL LOTS ARE SERVED BY PUBLIC WATER AND SANITARY SEWER.
14. ALL OTHER UTILITIES, ELECTRIC POWER, TELEPHONE, NATURAL GAS, ETC. SHALL BE PLACED UNDERGROUND.
15. COMMON AREAS ARE MORE PARTICULARLY DEFINED IN THE DECLARATION RECORDED IN DOCUMENT NO. 97-0015414, IN THE CLERK'S OFFICE OF THE CIRCUIT COURT OF JAMES CITY COUNTY.

PLAT RECORDED IN
P.B. NO. 772
ON 9/10/98
RECORDED 14 DAY OF OCTOBER 1998
DOCUMENT 98-01946-219
W. R. S. Clerk



SURVEYOR'S CERTIFICATE
I HEREBY CERTIFY THAT TO THE BEST OF MY KNOWLEDGE OR BELIEF, THIS PLAT COMPLIES WITH ALL OF THE REQUIREMENTS OF THE BOARD OF SUPERVISORS AND ORDINANCES OF THE COUNTY OF JAMES CITY, VIRGINIA, REGARDING THE PLATTING OF SUBDIVISIONS WITHIN THE COUNTY.
DATE 9/10/98 NAME W. R. S.

**AREA TABULATIONS
ORCHARD HILL SUBDIVISION
PHASE 2
SECTION IV-D**

TOTAL AREA	11.3673 ACRES 495,159.59 S.F.
LOTS (49 LOTS)	8.4802 ACRES 369,397.51 S.F.
COMMON AREA	0.6799 ACRES 29,616.44 S.F.
LIMITED COMMON AREA	0.4313 ACRES 18,787.43 S.F.
R/W	1.7759 ACRES 77,358.20 S.F.

OWNER'S CERTIFICATE
THE SUBDIVISION OF LAND AS SHOWN ON THIS PLAT BOOK 70 PAGE 87 IS WITH THE FREE CONSENT AND IN ACCORDANCE WITH THE DESIRE OF THE UNDERSIGNED OWNER(S), PROPRIETOR(S) AND OR TRUSTEE(S).
STONEHOUSE LIMITED LIABILITY COMPANY,
BY ITS ATTORNEY-IN-FACT:
STONEHOUSE MANAGEMENT COMPANY,
A VIRGINIA CORPORATION, PURSUANT TO SPECIAL POWER OF ATTORNEY DATED AUGUST 5, 1996 AND RECORDED IN THE CLERK'S OFFICE OF THE CIRCUIT COURT OF JAMES CITY COUNTY, VIRGINIA, DEED BOOK 802 AT PAGE 67
BY: W. Allen Ball DATE: 7/15/98
TITLE: W. ALLEN BALL EXECUTIVE VICE PRESIDENT AND GENERAL MANAGER.

CERTIFICATE OF NOTARIZATION
COMMONWEALTH OF VIRGINIA:
CITY/COUNTY OF James City County
THE FOREGOING INSTRUMENT WAS ACKNOWLEDGED, SUBSCRIBED AND SWORN BEFORE ME THIS 10th DAY OF September, 1998 BY W. Allen Ball AS Executive Vice President OF STONEHOUSE MANAGEMENT COMPANY, A VIRGINIA CORPORATION, ON BEHALF OF THE CORPORATION AS ATTORNEY-IN-FACT ON BEHALF OF STONEHOUSE LIMITED LIABILITY COMPANY, A VIRGINIA LIMITED LIABILITY COMPANY.
MY COMMISSION EXPIRES: 9/30/98
Ronald A. Ball
(SIGNATURE) NOTARY PUBLIC

CERTIFICATE OF SOURCE OF TITLE
THE PROPERTY SHOWN ON THIS PLAT WAS CONVEYED TO STONEHOUSE LIMITED LIABILITY COMPANY, A VIRGINIA LIMITED LIABILITY COMPANY BY THE FOLLOWING DEEDS:
FROM STONEHOUSE INC., A VIRGINIA CORPORATION BY DEED DATED MARCH 12, 1996 AND RECORDED MARCH 20, 1996 IN THE OFFICE OF THE CLERK OF THE CIRCUIT COURT OF THE COUNTY OF JAMES CITY IN DEED BOOK 778, PAGE 810 AND
FROM GOLF TRUST OF AMERICA, L.P., A DELAWARE LIMITED PARTNERSHIP BY DEED DATED JUNE 6, 1997 AND RECORDED JUNE 20, 1997 IN THE OFFICE OF THE CLERK OF THE CIRCUIT COURT OF THE COUNTY OF JAMES CITY AS DOCUMENT NO. 97-0009626 PLAT BOOK 66, PAGE 80-88.

CERTIFICATE OF APPROVAL
THIS SUBDIVISION PLAT IS APPROVED BY THE UNDERSIGNED IN ACCORDANCE WITH EXISTING SUBDIVISION REGULATIONS AND MAY BE ADMITTED TO RECORD.
DATE 9/10/98 Jim Anderson
VIRGINIA DEPARTMENT OF TRANSPORTATION
DATE 10/14/98 W. R. S.
SUBDIVISION AGENT OF JAMES CITY COUNTY

STATE OF VIRGINIA, COUNTY OF JAMES CITY
IN THE CLERK'S OFFICE OF THE CIRCUIT COURT PLAT SHOWN HEREON WAS PRESENTED AND ADMITTED TO RECORD THIS 14th DAY OF October, 1998 AS THE LAW DIRECTS
CLERK: W. R. S.
PLAT BOOK, 70 PAGE NO. 87-89



STONEHOUSE
SUBDIVISION PLAT
OF
ORCHARD HILL
PHASE 2
BEING A SUBDIVISION
OF
STONEHOUSE LIMITED LIABILITY
COMPANY
STONEHOUSE DISTRICT, JAMES CITY COUNTY
DATE: 09/04/98 SCALE: 1"=700'

Langley and McDonald, P.C.
Engineers - Surveyors - Planners
Landscape Architects - Environmental Consultants
VIRGINIA BEACH WILLIAMSBURG
GRAPHIC SCALE SCALE: 1" = 700'
350 0 175 350 700 1400
SHEET 1 OF 3