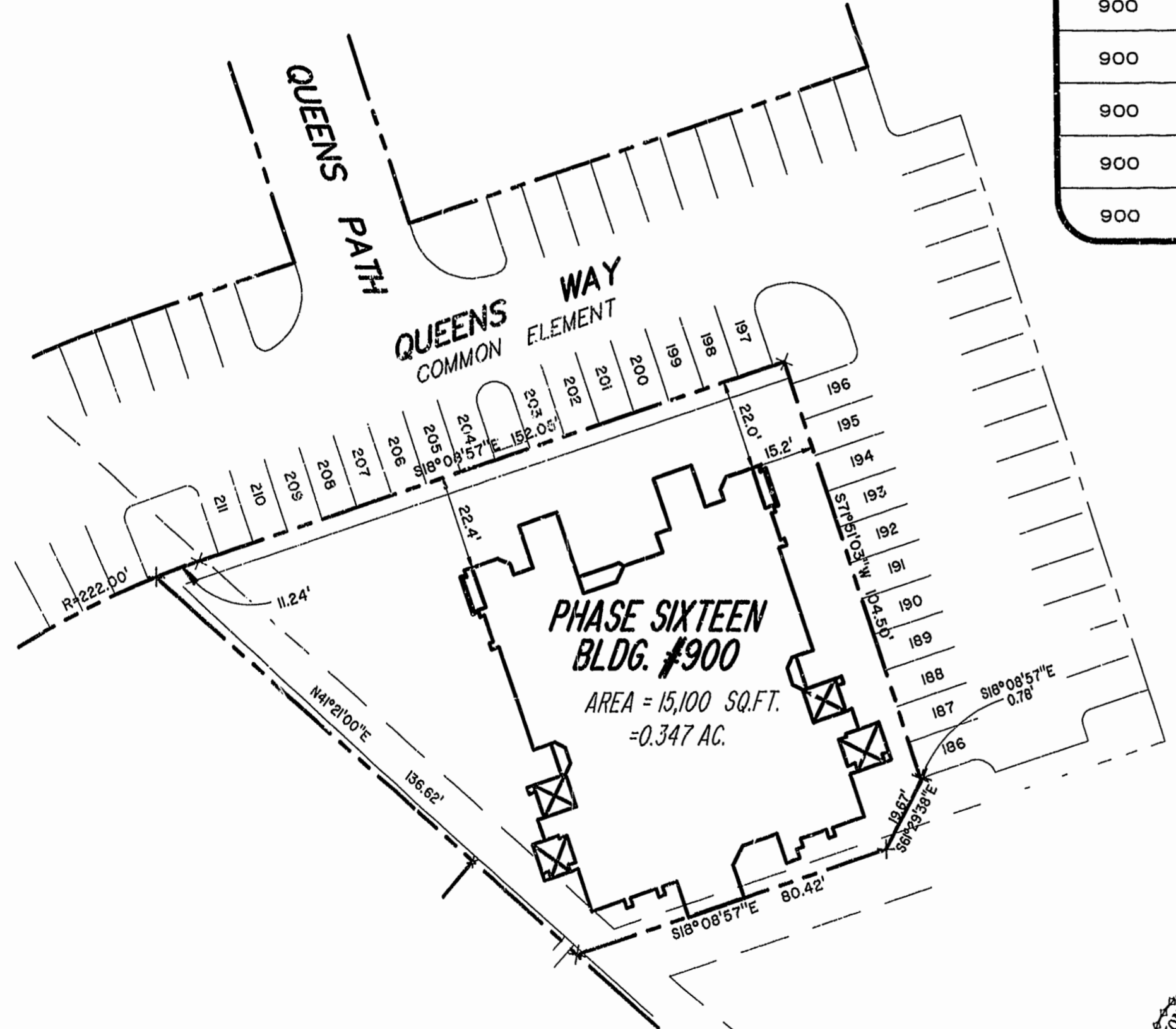
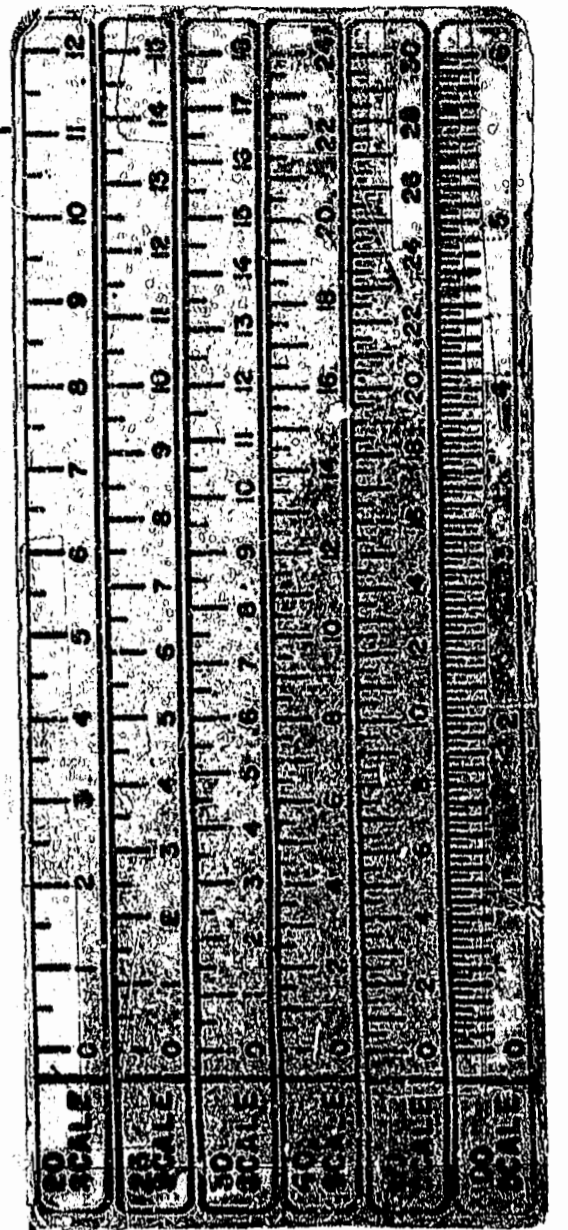


BLDG. NUMBER	UNIT NUMBER	UNIT TYPE	ADDRESS	PARKING SPACE NO.
900	9-901	AR	90' QUEENS PATH	202
900	9-902	B	902 QUEENS PATH	200
900	9-903	A	903 QUEENS PATH	198
900	9-904	E	904 QUEENS PATH	194
900	9-905	C	905 QUEENS PATH	192
900	9-906	D	906 QUEENS PATH	190
900	9-907	F	907 QUEENS WAY	188
900	9-908	DR	908 QUEENS WAY	186
900	9-909	CR	909 QUEENS WAY	207
900	9-910	ER	910 QUEENS PATH	205



1:29 PM
 Recorded 25 Oct. 1998
 DOCUMENT # 98 02 B 469
 [Signature] Clerk

PLAT RECORDED IN
 P.B. NO. 70 PAGE 72-75



EXHIBIT # 1 PHASE SIXTEEN
 LAFONTAINE CONDOMINIUMS
 AT
 WILLIAMSBURG CROSSING
PHASE SIXTEEN
 FOR
 UNIVERSITY SQUARE ASSOCIATES
 JAMESTOWN DISTRICT JAMES CITY COUNTY, VIRGINIA

Hassell & Folkes, P.C. Engineers Surveyors Planners Chesapeake, VA 23320 (757) 547-9531	SIZE CONTRACT NO C	DISK/BOX 49E/15	FILENAME LF-P16.DWG	REV.
SCALE: 1" = 25'		DATE: 09/18/98		SHEET 4 of 4