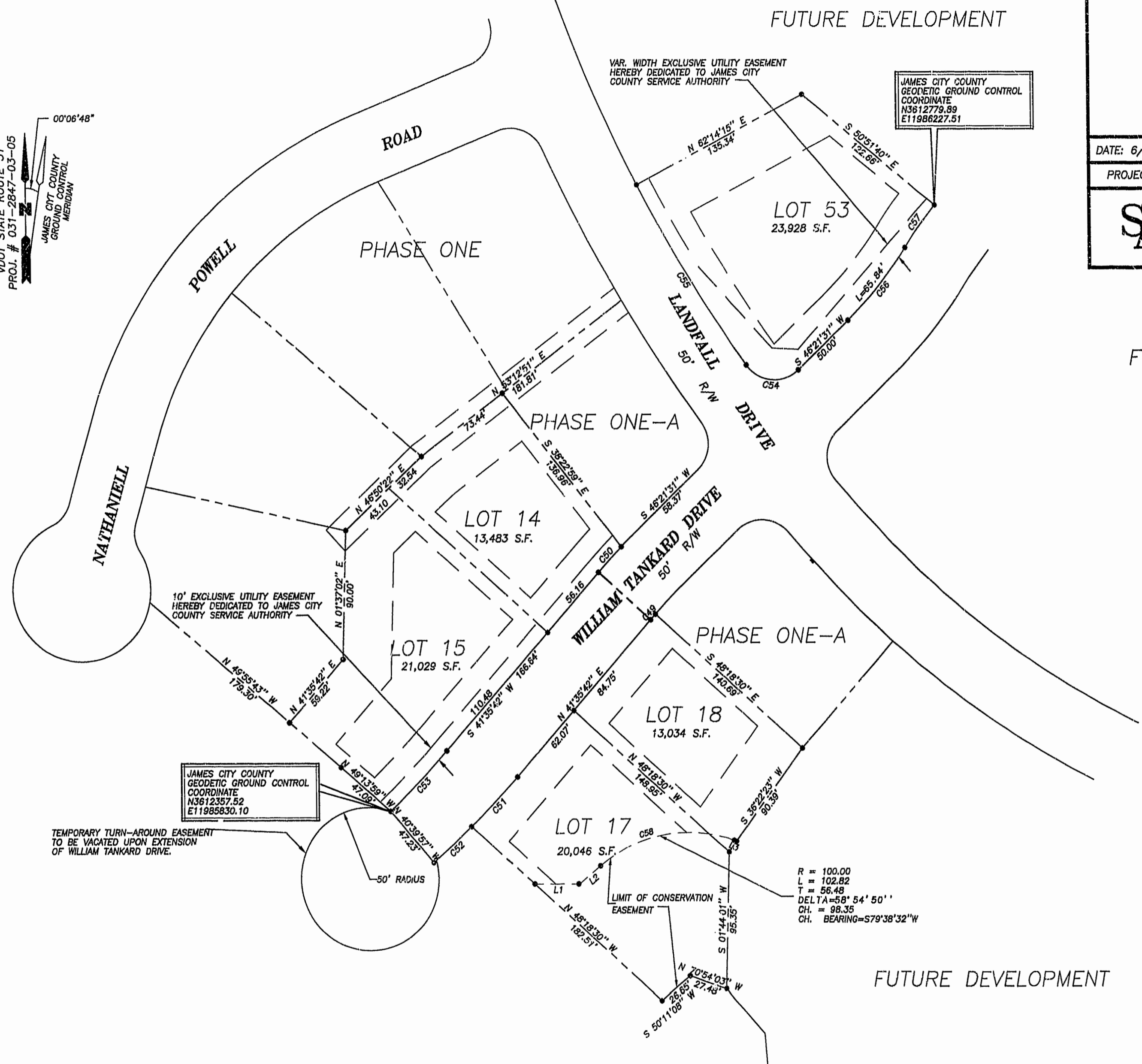
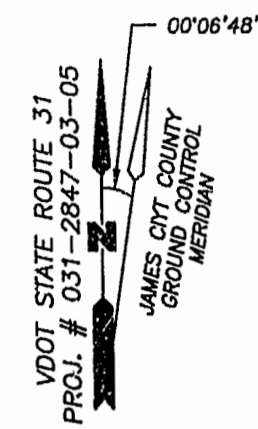


PLAT OF SUBDIVISION
LANDFALL
 AT
JAMESTOWN
 PHASE TWO--A
 JAMESTOWN DISTRICT
 JAMES CITY COUNTY, VIRGINIA

DATE: 6/10/98 SHEET 2 OF 2 SCALE: 1"=50'

PROJECT NO: 95-010 CADD

SA **SLEDD & ASSOCIATES, P.C.**
 ENGINEERS PLANNERS SURVEYORS
 11832 ROCK LANDING DRIVE, SUITE 203
 NEWPORT NEWS, VIRGINIA 23608
 (157) 873-3386



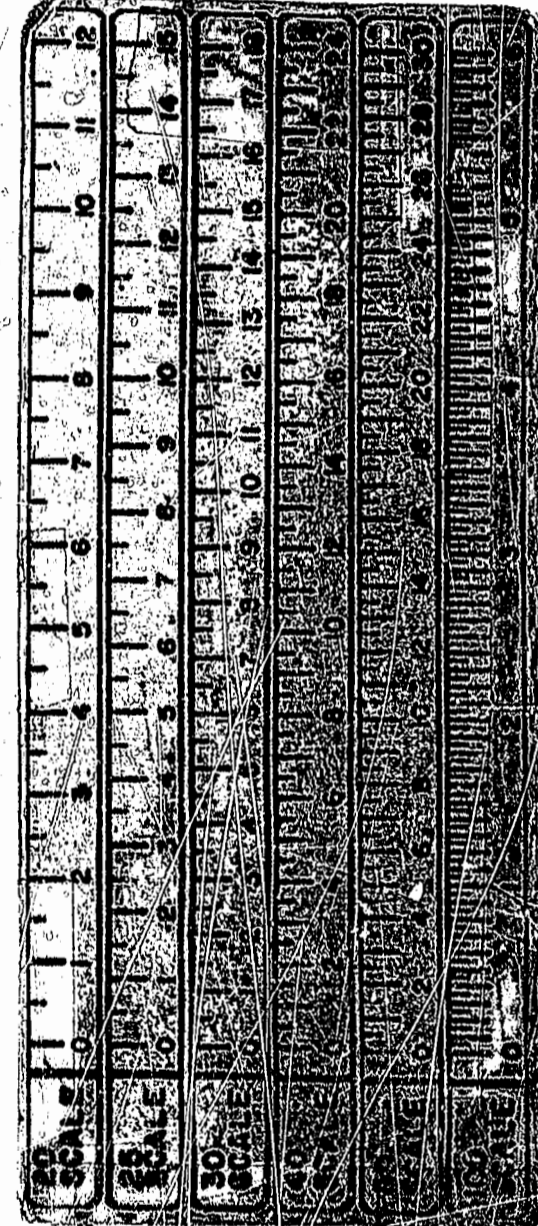
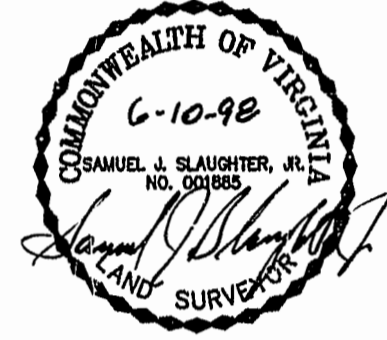
JAMES CITY COUNTY
 GEODETIC GROUND CONTROL
 COORDINATE
 N3612357.52
 E11985830.10

10' EXCLUSIVE UTILITY EASEMENT
 HEREBY DEDICATED TO JAMES CITY
 COUNTY SERVICE AUTHORITY

TEMPORARY TURN-AROUND EASEMENT
 TO BE VACATED UPON EXTENSION
 OF WILLIAM TANKARD DRIVE.

JAMES CITY COUNTY
 GEODETIC GROUND CONTROL
 COORDINATE
 N3612779.89
 E11986227.51

FUTURE DEVELOPMENT



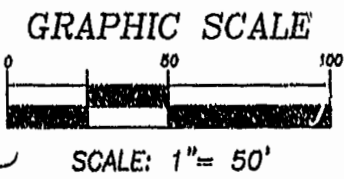
R = 100.00
 L = 102.82
 T = 56.48
 DELTA = 58° 54' 50"
 CH. = 98.35
 CH. BEARING = S79° 38' 32" W

LINE TABLE

NUMBER	DIRECTION	DISTANCE
L1	S89°58'17"W	32.51'
L2	S50°11'08"W	19.71'
L3	N70°54'03"W	1.82'

FUTURE DEVELOPMENT

12:48 pm
 27 July 1998
 DOCUMENT # 970013888
 Melissa S. Whitman
 By Claudia A. Binkhol 3, Dep Clerk



95-010-020