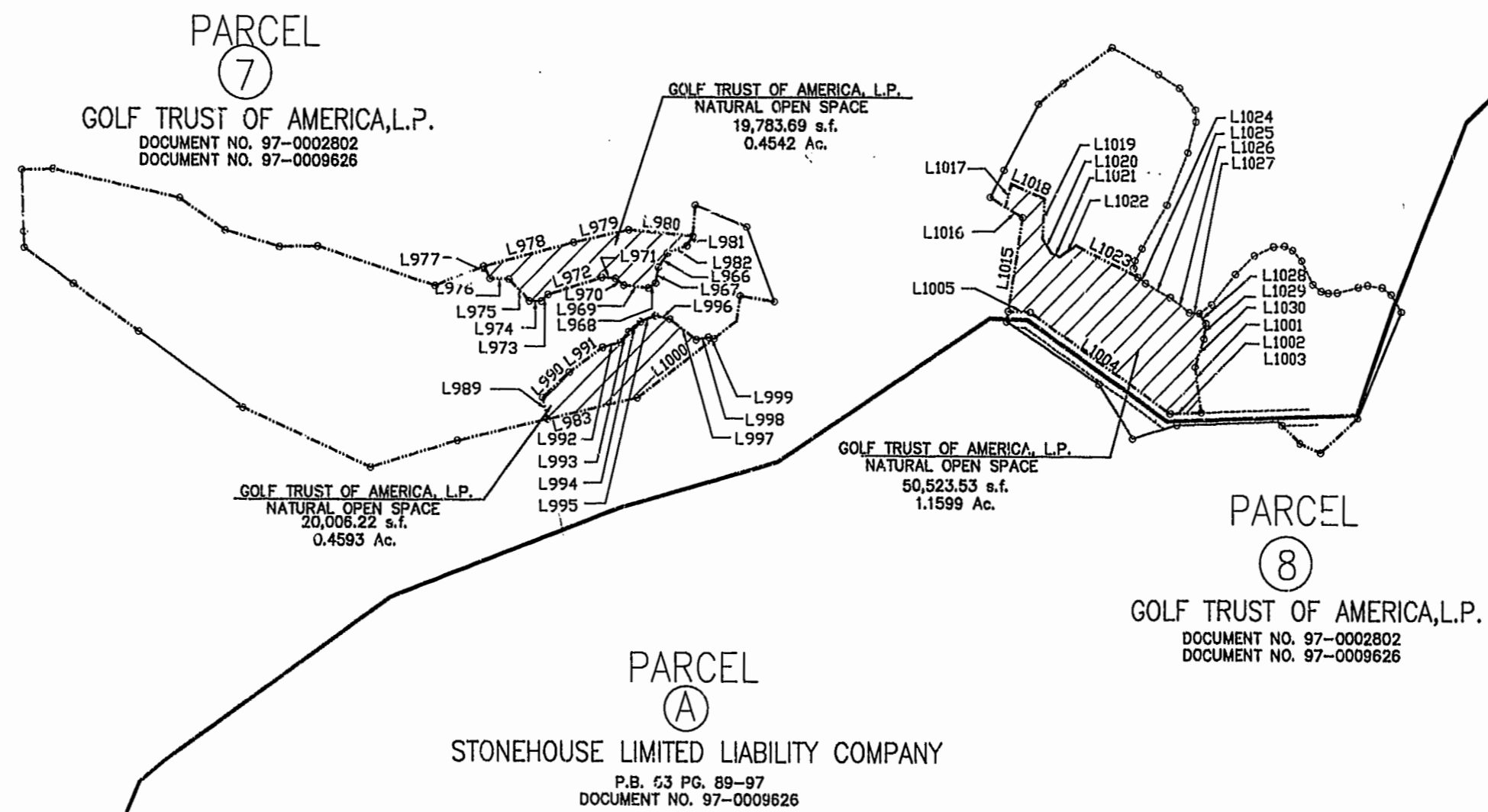


LINE TABLE

L966	26.73	N33°41'34"E
L967	25.27	N10°18'40"E
L968	13.81	N56°18'27"E
L969	39.90	S84°12'50"E
L970	17.35	S52°46'02"E
L971	21.63	S85°49'19"E
L972	91.88	N72°38'25"E
L973	15.29	N48°00'44"E
L974	19.60	N89°59'35"E
L975	47.04	S44°02'42"E
L976	31.29	S87°57'41"E
L977	71.36	S28°42'35"E
L978	151.70	S75°12'01"W
L979	92.21	S77°08'33"W
L980	103.81	N84°52'33"W
L981	17.69	N30°53'07"E
L982	34.29	N69°13'21"E
L983	149.73	N76°40'39"E
L984	37.04	N73°19'57"E
L985	8.14	S06°48'31"E
L986	74.03	S58°50'13"W
L987	73.73	S73°46'51"W
L988	11.24	N88°01'51"W
L989	35.00	S13°19'21"E
L990	58.97	S47°24'38"W
L991	67.48	S54°03'52"W
L992	29.98	S73°55'14"W
L993	21.80	S39°38'43"W
L994	24.74	S50°02'28"W
L995	25.13	S67°44'46"W
L996	24.12	N77°12'07"W
L997	53.73	N53°07'55"W
L998	20.35	S79°12'34"W
L999	9.38	N79°09'15"W
L1000	156.36	N53°02'05"E
L1001	72.38	N07°52'36"W
L1002	50.46	S87°55'50"W
L1003	277.73	N55°03'19"W
L1004	35.25	N88°02'14"W
L1005	20.75	N60°04'19"W
L1006	52.23	N29°57'31"W
L1007	13.91	N02°17'51"E
L1008	19.00	N35°21'29"E
L1009	26.07	S66°51'15"E
L1010	50.01	S45°53'05"E
L1011	165.02	N87°45'51"E
L1012	76.06	N73°33'59"E
L1013	100.39	S31°50'43"E
L1014	179.24	S56°49'51"E
L1015	166.19	S09°07'41"W
L1016	32.22	S58°51'33"E
L1017	37.54	S13°55'20"W
L1018	59.14	N66°31'38"W
L1019	62.95	N03°21'18"E
L1020	26.44	N33°50'13"W
L1021	14.87	N66°48'21"W
L1022	31.04	S56°02'18"W
L1023	111.85	N64°08'16"W
L1024	15.99	N52°52'45"W
L1025	46.37	N61°06'48"W
L1026	38.36	N51°56'06"W
L1027	16.97	N84°45'35"W
L1028	18.79	N35°12'25"W
L1029	24.94	N07°26'16"E
L1030	46.95	N18°50'38"E



PLAT RECORDED IN
 P.D. NO. 70, PAGE 1-8

3:18 PM
 Recorded 10 day of July 1998
 DOCUMENT # 980012720
 [Signature] Clerk

