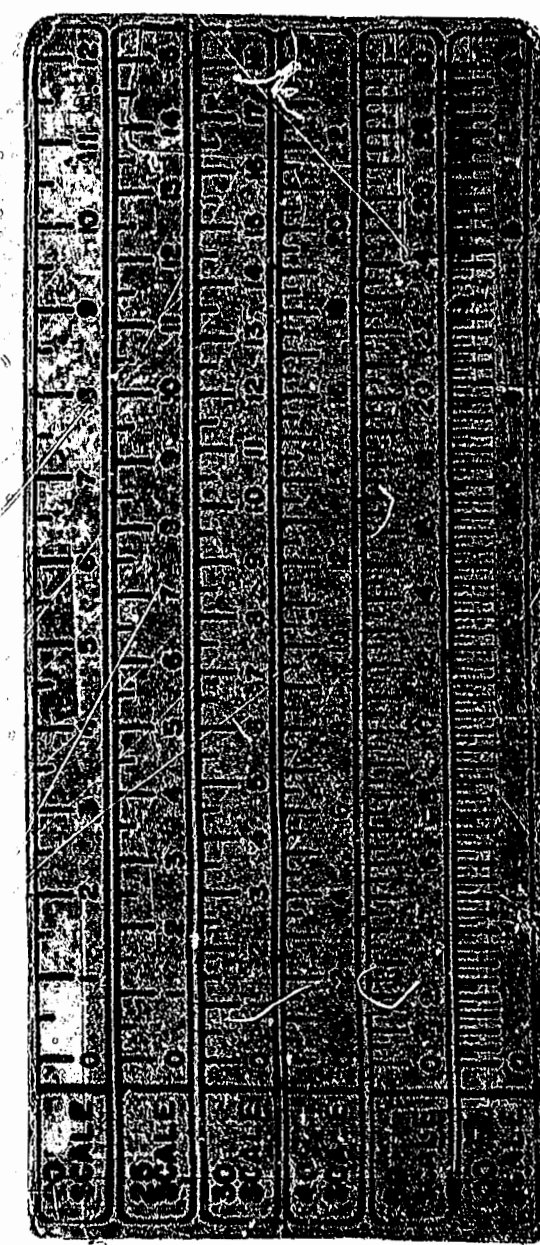
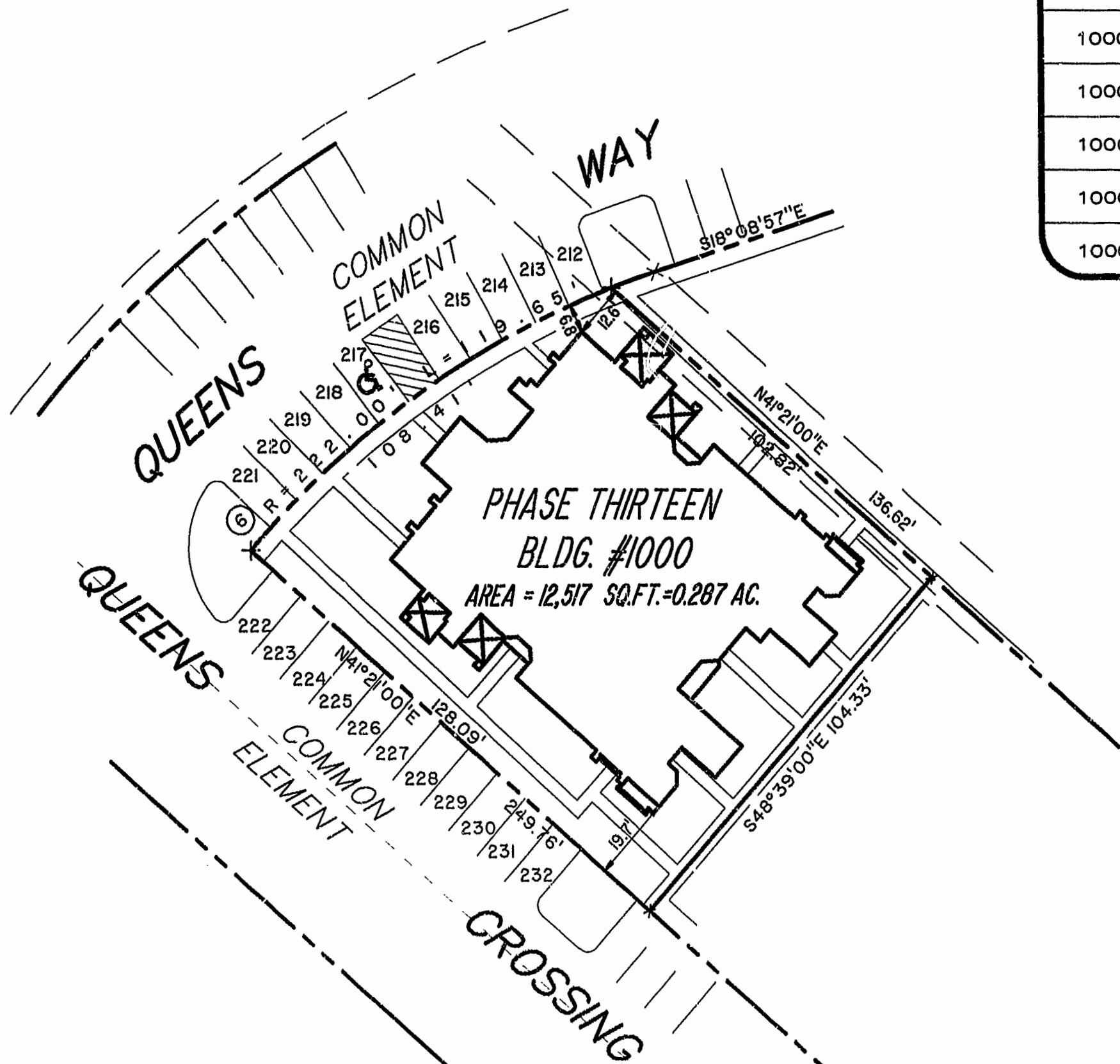


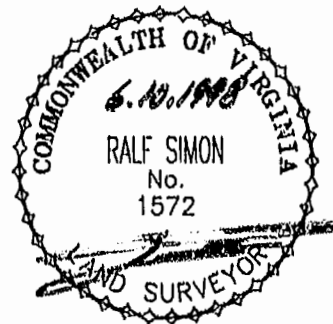
BLDG. NUMBER	UNIT NUMBER	UNIT TYPE	ADDRESS	PARKING SPACE NO.
1000	10-1001	AR	1001 QUEENS CROSSING	232
1000	10-1002	B	1002 QUEENS CROSSING	230
1000	10-1003	A	1003 QUEENS CROSSING	228
1000	10-1004	E	1004 QUEENS CROSSING	226
1000	10-1005	C	1005 QUEENS CROSSING	224
1000	10-1006	D	1006 QUEENS CROSSING	220
1000	10-1007	F	1007 QUEENS CROSSING	218
1000	10-1008	DR	1008 QUEENS CROSSING	216
1000	10-1009	CR	1009 QUEENS CROSSING	214
1000	10-1010	ER	1010 QUEENS CROSSING	212



**EXHIBIT # 1 PHASE THIRTEEN**  
LAFONTAINE CONDOMINIUMS  
AT  
WILLIAMSBURG CROSSING  
**PHASE THIRTEEN**

FOR  
UNIVERSITY SQUARE ASSOCIATES

JAMESTOWN DISTRICT JAMES CITY COUNTY, VIRGINIA



Hassell & Folkes, P.C.  
Engineers Surveyors Planners  
Chesapeake, VA. 23320  
(757) 547-9531

SIZE	CONTRACT NO	DISK/BOX	FILENAME	REV.
C		49C/15	LF-P13.DWG	
SCALE: 1" = 25'		DATE: 06/08/98		SHEET 4 of 4

PLAT RECORDED  
P.D. NO. 69 PAGE 89