

46-1-01-0-0001
"GREENSPRINGS PLANTATION"
(DB 322, PG 254)



EXIST. 20' JAMES CITY COUNTY SERVICE
AUTHORITY SAN. SEWER EASEMENT AS
SHOWN IN AS-BUILT LOCATION. D.B. 141 - PG. 388

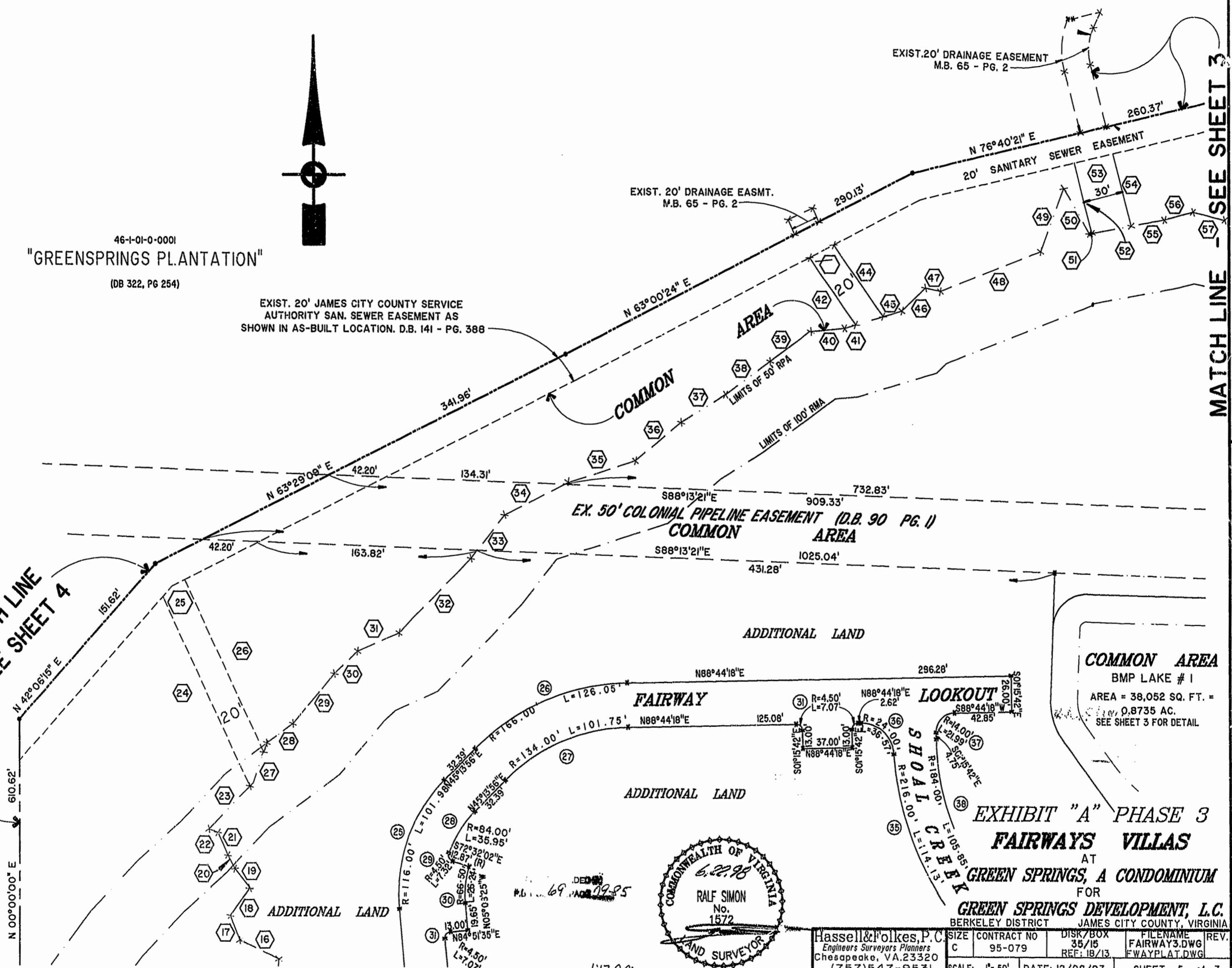
EXIST. 20' DRAINAGE EASMT.
M.B. 65 - PG. 2

EXIST. 20' DRAINAGE EASEMENT
M.B. 65 - PG. 2

20' SANITARY SEWER EASEMENT

SEE SHEET 3
MATCH LINE

MATCH LINE
SEE SHEET 4



EX. 50' COLONIAL PIPELINE EASEMENT (D.B. 90 PG. 1)
COMMON AREA

ADDITIONAL LAND

COMMON AREA
BMP LAKE # 1
AREA = 38,052 SQ. FT. =
0.8735 AC.
SEE SHEET 3 FOR DETAIL

ADDITIONAL LAND

ADDITIONAL LAND



Hassell & Polkes, P.C.
Engineers Surveyors Planners
Chesapeake, VA, 23320
(757) 547-9531

EXHIBIT "A" PHASE 3
FAIRWAYS VILLAS
AT
GREEN SPRINGS, A CONDOMINIUM
FOR
GREEN SPRINGS DEVELOPMENT, L.C.
BERKELEY DISTRICT JAMES CITY COUNTY, VIRGINIA

SIZE	CONTRACT NO	DISK/BOX	FILENAME	REV.
C	95-079	35/15	FAIRWAY3.DWG	
SCALE: 1" = 50'	DATE: 12/08/97	REF: 18/13	FWAYPLAT.DWG	
			SHEET 5 of 7	

1:13.0m
DOCUMENT # 98011523
Hassell & Polkes, P.C.

