

"GREENSPRINGS PLANTATION"
46-1-01-0-0001
(DB 322, PG 254)

EXIST. 20' JAMES CITY COUNTY SERVICE
AUTHORITY SAN. SEWER EASEMENT AS
SHOWN IN AS-BUILT LOCATION, D.B. 141 - PG. 388

EXIST. 20' DRAINAGE EASEMENT
M.B. 65 - PG. 2

MATCH LINE - SEE SHEET 5
N 76°02'42" E
286.07'
144.03'

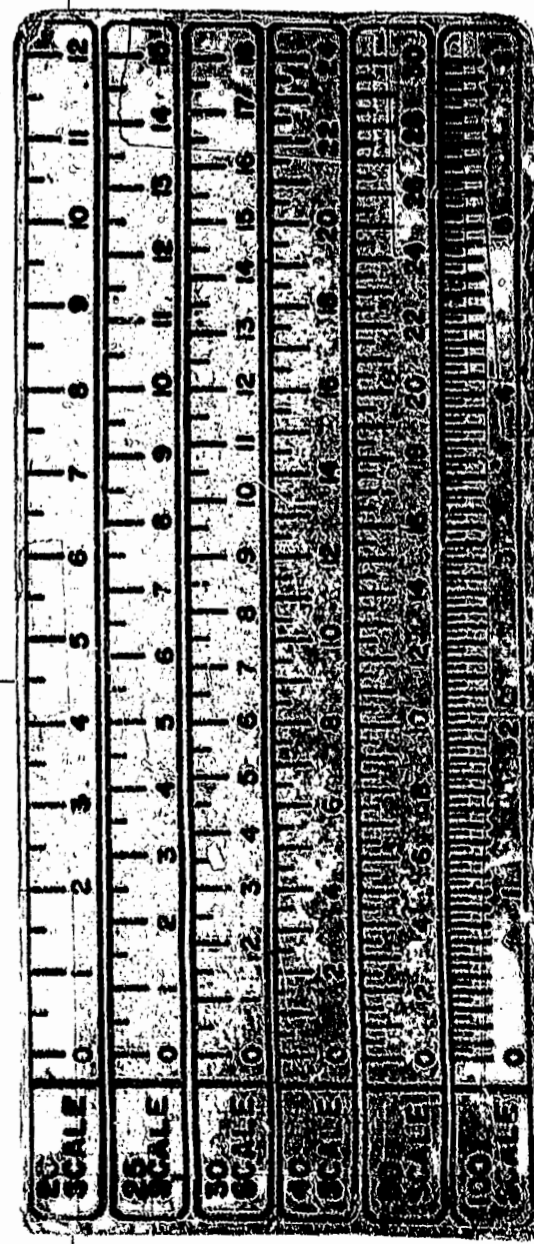
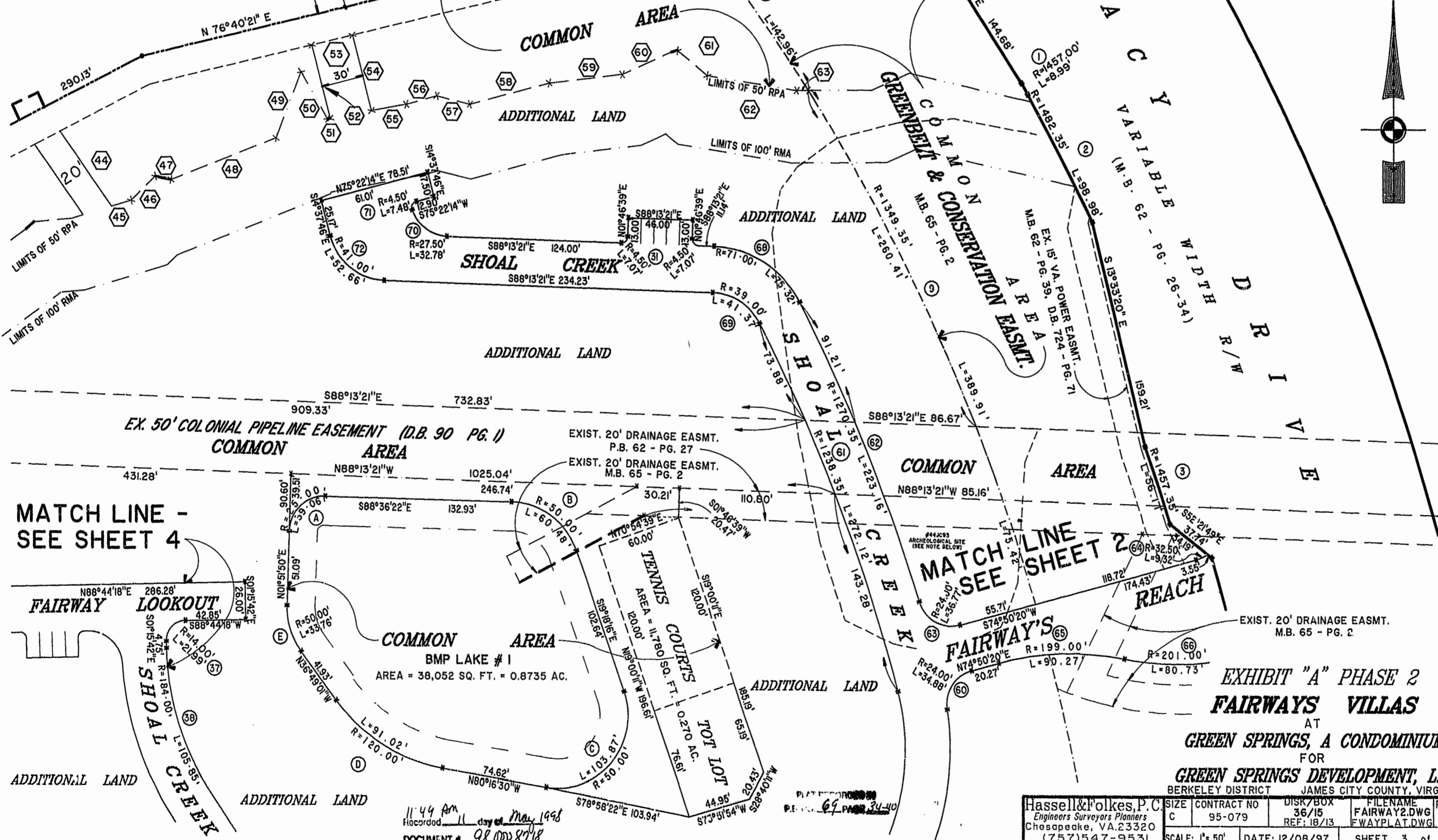
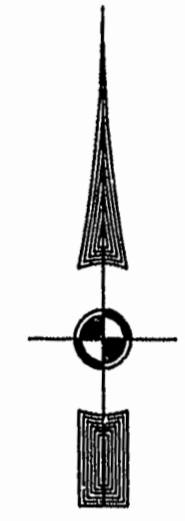


EXHIBIT "A" PHASE 2
FAIRWAYS VILLAS
AT
GREEN SPRINGS, A CONDOMINIUM
FOR
GREEN SPRINGS DEVELOPMENT, L.C.
BERKELEY DISTRICT JAMES CITY COUNTY, VIRGINIA

Hassell & Folkes, P.C. Engineers Surveyors Planners Chesapeake, VA, 23320 (757) 547-9531	SIZE CONTRACT NO C 95-079	DISK/BOX 36/15 REF: 18/13	FILENAME REV. FAIRWAY2.DWG FWAYPLAT.DWG
	SCALE: 1" = 50'	DATE: 12/08/97	SHEET 3 of 7

11:44 AM
Recorded 11 day of May 1998
DOCUMENT # 98 000 8218
H.A.S. W.A.S. com