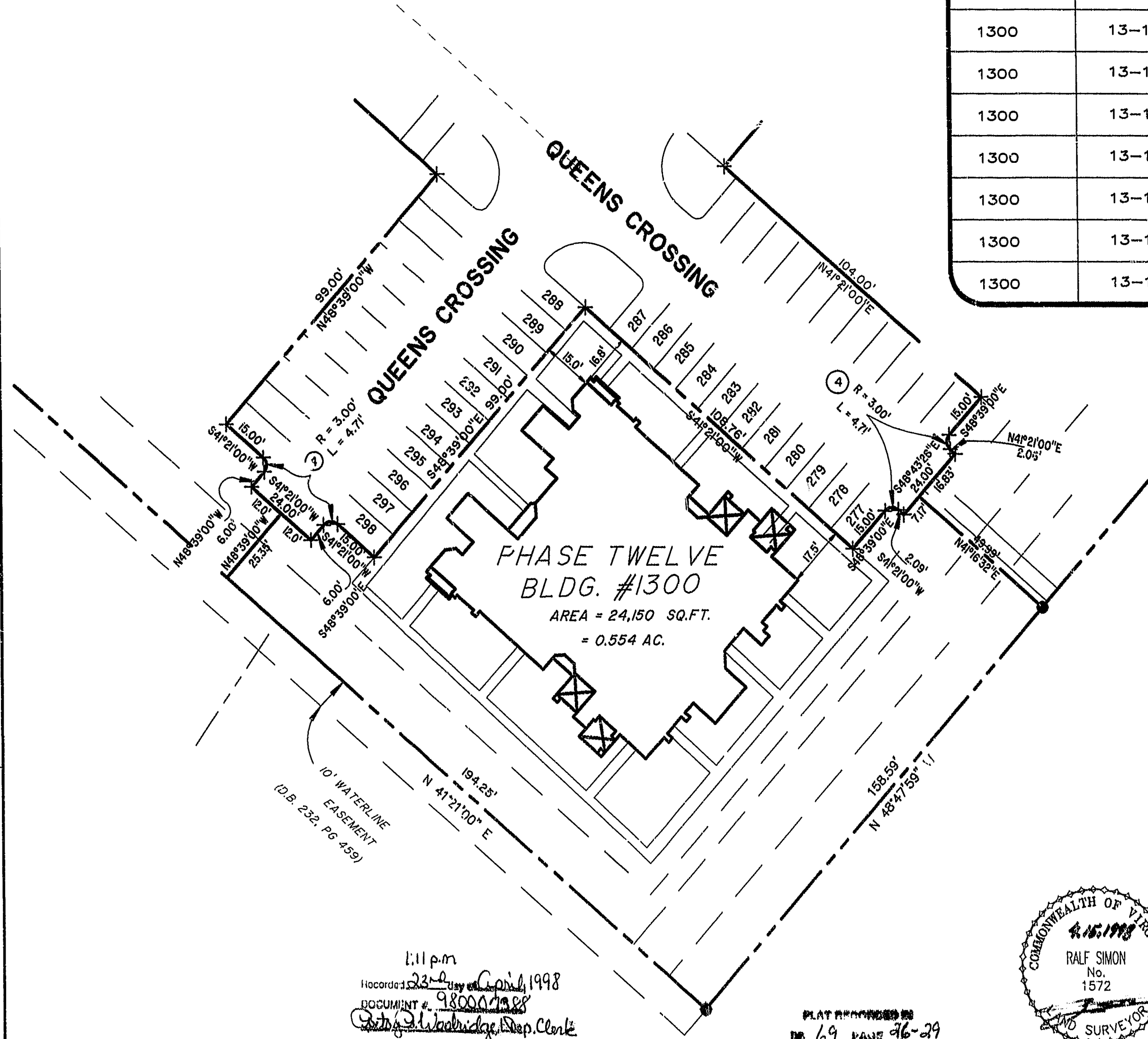




| BLDG. NUMBER | UNIT NUMBER | UNIT TYPE | ADDRESS | PARKING SPACE NO. |
|--------------|-------------|-----------|----------------------|-------------------|
| 1300 | 13-1301 | AR | 1301 QUEENS CROSSING | 294 |
| 1300 | 13-1302 | B | 1302 QUEENS CROSSING | 292 |
| 1300 | 13-1303 | A | 1303 QUEENS CROSSING | 290 |
| 1300 | 13-1304 | E | 1304 QUEENS CROSSING | 287 |
| 1300 | 13-1305 | C | 1305 QUEENS CROSSING | 283 |
| 1300 | 13-1306 | D | 1306 QUEENS CROSSING | 281 |
| 1300 | 13-1307 | F | 1307 QUEENS CROSSING | 279 |
| 1300 | 13-1308 | DR | 1308 QUEENS CROSSING | 277 |
| 1300 | 13-1309 | CR | 1309 QUEENS CROSSING | 298 |
| 1300 | 13-1310 | ER | 1310 QUEENS CROSSING | 296 |



PHASE TWELVE
BLDG. #1300
AREA = 24,150 SQ.FT.
= 0.554 AC.

10' WATERLINE
EASEMENT
(D.B. 232, PG 459)

1:11 p.m.
Recorded 23rd Day of April 1998
DOCUMENT # 980007188
Cathy J. Wadbridge, Dep. Clerk

PLAT RECORDED IN
69 PAGE 28-29

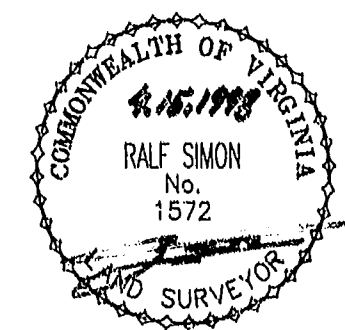


EXHIBIT # 1 PHASE TWELVE
LAFONTAINE CONDOMINIUMS
AT
WILLIAMSBURG CROSSING
PHASE TWELVE
FOR
UNIVERSITY SQUARE ASSOCIATES
JAMESTOWN DISTRICT, JAMES CITY COUNTY, VIRGINIA

| | | | | |
|--|-----------------------|--------------------|------------------------|--------------|
| Hassell & Folkes, P.C. Engineers Surveyors Planners Chesapeake, VA. 23320 (757)547-9531 | SIZE CONTRACT NO C | DISK/BOX 49B/15 | FILENAME LF-P12.DWH | REV. |
| SCALE: 1" = 25' | | DATE: 04/06/98 | | SHEET 4 of 4 |

