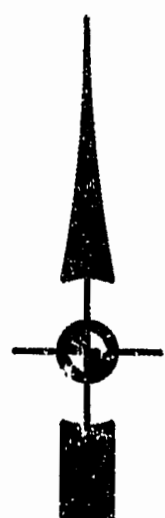


46-1-01-0-0001  
"GREENSPRINGS PLANTATION"  
(DB 322, PG 254)



EXIST. 20' JAMES CITY COUNTY SERVICE  
AUTHORITY SAN. SEWER EASEMENT AS  
SHOWN IN AS-BUILT LOCATION. D.B. 141 - PC. 388

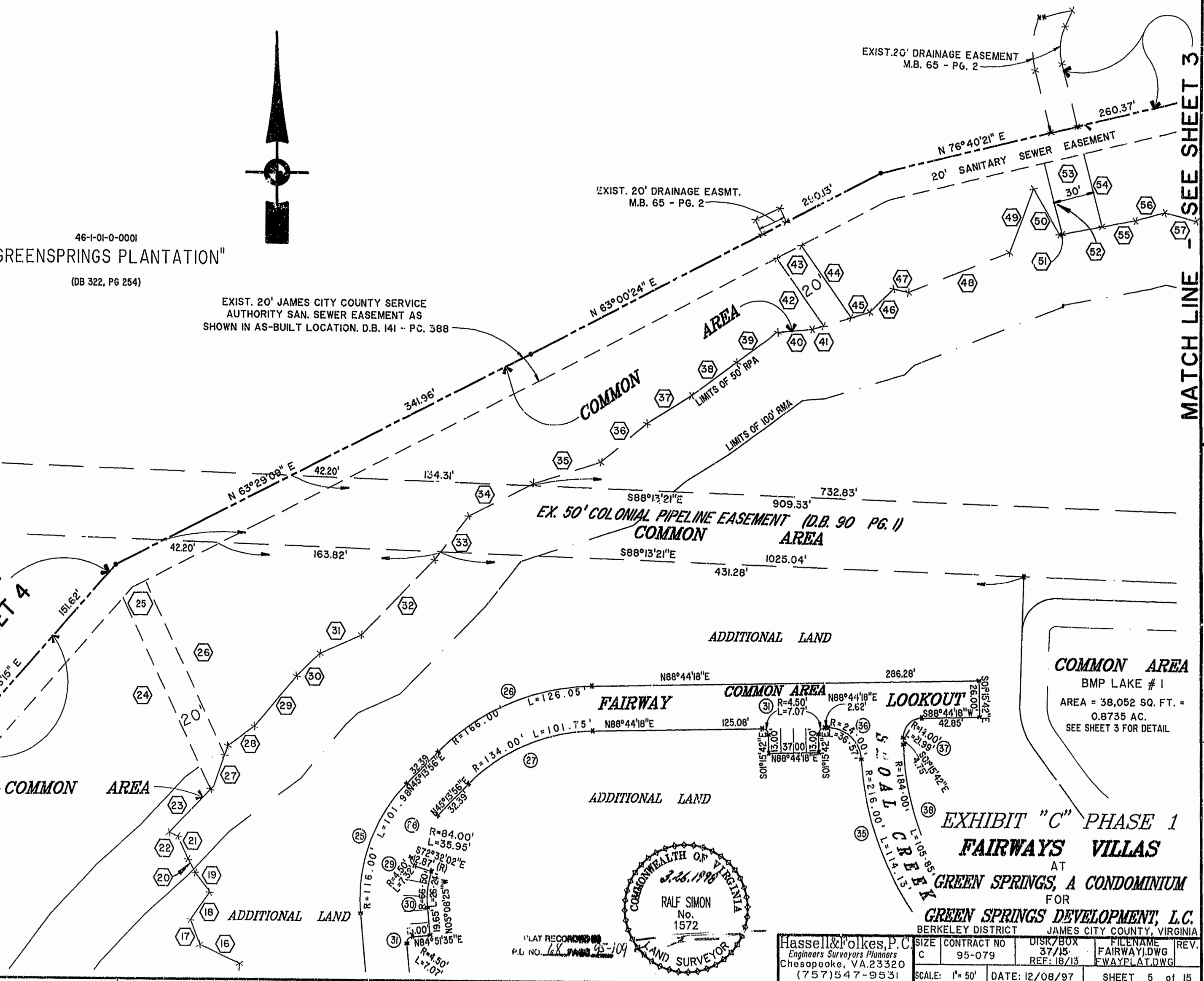
EXIST. 20' DRAINAGE EASEMENT  
M.B. 65 - PG. 2

EXIST. 20' DRAINAGE EASMT.  
M.B. 65 - PG. 2

MATCH LINE - SEE SHEET 3

MATCH LINE  
SEE SHEET 4

N 00°00'00" E



EX. 50' COLONIAL PIPELINE EASEMENT (D.B. 90 PG. 1)  
COMMON AREA

ADDITIONAL LAND

COMMON AREA  
BMP LAKE # 1  
AREA = 38,052 SQ. FT. =  
0.8735 AC.  
SEE SHEET 3 FOR DETAIL

FAIRWAY

LOOKOUT

EXHIBIT "C" PHASE 1  
FAIRWAYS VILLAS  
AT  
GREEN SPRINGS, A CONDOMINIUM  
FOR  
GREEN SPRINGS DEVELOPMENT, L.C.  
BERKELEY DISTRICT JAMES CITY COUNTY, VIRGINIA



PLAT RECORDED  
P.L. NO. 168-109

Hassell & Polkes, P.C. Engineers Surveyors Planners Chesapeake, VA. 23320 (757)547-9531	SIZE CONTRACT NO C 95-079	DISK/BOX 37/15 REF: 18/13	FILENAME FAIRWAY1.DWG FWAYPLAT.DWG	REV.
SCALE: 1" = 50'	DATE: 12/08/97	SHEET 5 of 15		

11397  
Recorded 12/15/98  
DOCUMENT # 98 000 5 806  
Walter S. Ward

