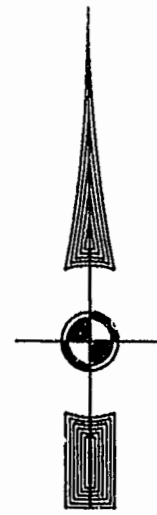


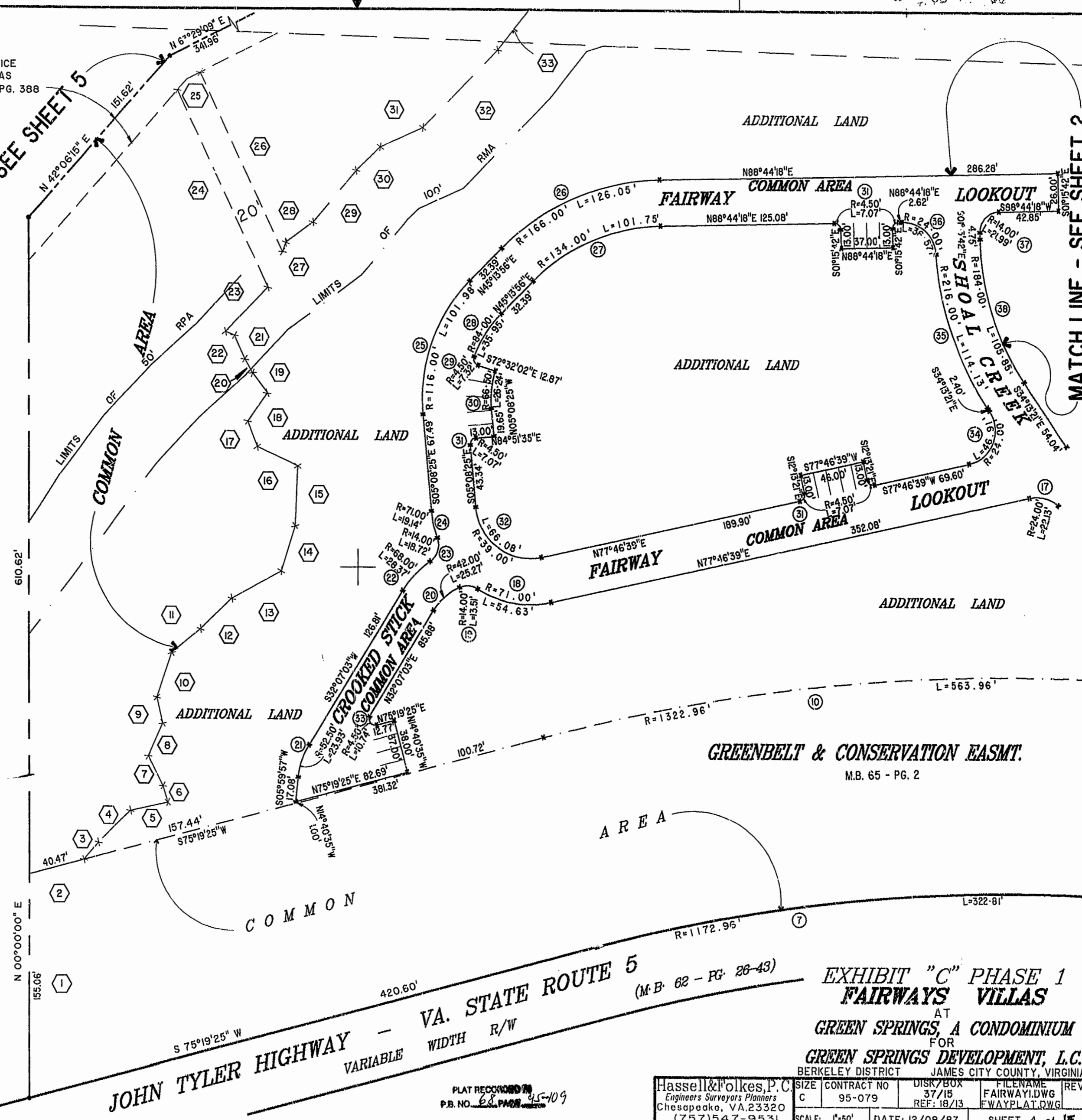
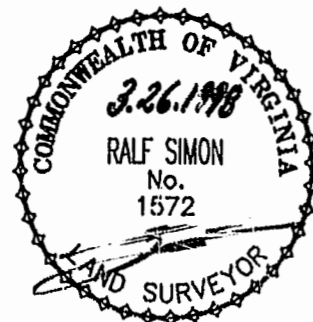
EXIST. 20' JAMES CITY COUNTY SERVICE
 AUTHORITY SAN. SEWER EASEMENT AS
 SHOWN IN AS-BUILT LOCATION. D.B. 141 - PG. 388



MATCH LINE - SEE SHEET 5

MATCH LINE - SEE SHEET 2

46-1-01-0-0001
 "GREENSPRINGS PLANTATION"
 (DB 322, PG 254)



GREENBELT & CONSERVATION EASMT.
 M.B. 65 - PG. 2

JOHN TYLER HIGHWAY - VA. STATE ROUTE 5
 VARIABLE WIDTH R/W
 (M.B. 62 - PG. 28-43)

EXHIBIT "C" PHASE 1
 FAIRWAYS VILLAS
 AT
 GREEN SPRINGS, A CONDOMINIUM
 FOR
 GREEN SPRINGS DEVELOPMENT, L.C.
 BERKELEY DISTRICT JAMES CITY COUNTY, VIRGINIA

Hassell & Folkes, P.C. Engineers Surveyors Planners Chesapeake, VA. 23320 (757) 547-9531	SIZE: C	CONTRACT NO: 95-079	DISK/BOX: 37/15 REF: 19/13	FILENAME: FAIRWAY1.DWG FWAYPLAT.DWG	REV:
PLAT RECORDED P.B. NO. 68 PAGE 45-109	SCALE: 1"=50'	DATE: 12/08/87	SHEET 4 of 15		

Recorded 1:39 p.m.
 13th day of April 1998
 DOCUMENT # 980005806
 Wilson, Simon

