

FUTURE SECTION IV-C

PARCEL ②
GOLF TRUST OF AMERICA, L.P.
HOLE 12
DOCUMENT NO. 970009626

FUTURE SECTION IV-E
"THE OVERLOOK AT ORCHARD HILL"

PARCEL ②
GOLF TRUST OF AMERICA, L.P.
HOLE 12
DOCUMENT NO. 970009626

FUTURE SECTION IV-D
"ORCHARD HILL"

SECTION IV-B
"LAUREL RIDGE"

FUTURE SECTION IV-D
"ORCHARD HILL"

RIDGE DRIVE

P.O.B.

FOND RUN

MILE

"NAD 83" COORDINATES
N 3687803.4701
E 11971769.9378

"NAD 83" COORDINATES
N 3686802.6437
E 11972998.0110

EXISTING TEMPORARY CART
AND IRRIGATION EASEMENT
DOCUMENT NO. 970009626

10' UTILITY EASEMENT
FOR EXCLUSIVE USE OF
JAMES CITY SERVICE
AUTHORITY

10' UTILITY EASEMENT
FOR EXCLUSIVE USE OF
JAMES CITY SERVICE
AUTHORITY

LOT 1
65,615.24 S.F.
1.5063 AC.

LOT 2
57,572.82 S.F.
1.3217 AC.

LOT 29
43,236.86 S.F.
0.9926 AC.

LOT 30
39,400.16 S.F.
0.9045 AC.

LOT 31
35,576.46 S.F.
0.8167 AC.

LOT 32
507.88.11 S.F.
0.0116 AC.

LOT 33
52.03 S.F.
0.0012 AC.

LOT 34
52.03 S.F.
0.0012 AC.

LOT 35
52.03 S.F.
0.0012 AC.

LOT 36
52.03 S.F.
0.0012 AC.

LOT 37
52.03 S.F.
0.0012 AC.

LOT 38
52.03 S.F.
0.0012 AC.

LOT 39
52.03 S.F.
0.0012 AC.

LOT 40
52.03 S.F.
0.0012 AC.

LOT 41
52.03 S.F.
0.0012 AC.

LOT 42
52.03 S.F.
0.0012 AC.

LOT 43
52.03 S.F.
0.0012 AC.

LOT 44
52.03 S.F.
0.0012 AC.

LOT 45
52.03 S.F.
0.0012 AC.

LOT 46
52.03 S.F.
0.0012 AC.

LOT 47
52.03 S.F.
0.0012 AC.

LOT 48
52.03 S.F.
0.0012 AC.

LOT 49
52.03 S.F.
0.0012 AC.

LOT 50
52.03 S.F.
0.0012 AC.

LINE TABLE

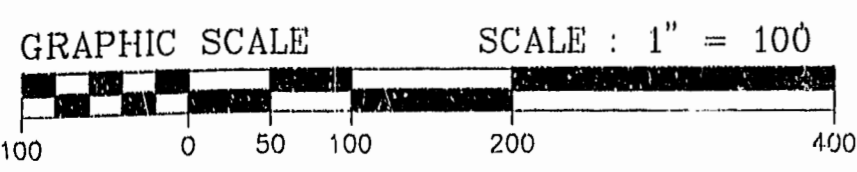
LINE	LENGTH	BEARING
L1	163.14'	S40°23'21"W
L2	241.02'	S87°55'29"W
L3	175.64'	S76°58'21"W
L4	180.69'	S76°58'21"W
L5	237.57'	S87°55'29"W
L6	162.35'	S40°23'21"W
L7	10.00'	N05°52'49"W
L8	301.77'	N84°07'11"E
L9	115.93'	N79°52'17"E
L10	121.00'	N79°52'17"E
L11	302.14'	N84°07'11"E
L12	10.63'	N29°43'28"W
L13	11.05'	S35°16'48"E
L14	10.80'	S35°16'48"E

STONEHOUSE
 SUBDIVISION PLAT
 OF
 3 LOTS IN
 "ORCHARD HILL" SEC. IV-D
 AND
 2 LOTS IN
 "THE OVERLOOK AT ORCHARD HILL" SEC. IV-E
 BEING A SUBDIVISION
 OF
**STONEHOUSE LIMITED LIABILITY
 COMPANY**
 STONEHOUSE DISTRICT, JAMES CITY COUNTY
 DATE: 12/11/97 SCALE: 1"=100'

PLAT RECORDED IN
P.B. NO. 68 PAGE 42 & 43

SHEET 2 OF 2

Recorded 16 day of Dec 1998
DOCUMENT # 980000979
By *William S. Whitcomb* Clerk
By *Claudia M. Schickel* Clerk



CURVE	RADIUS	LENGTH	TANGENT	CHORD	BEARING	DELTA
C1	1230.00'	125.22'	62.66'	125.16'	S51°-48'-13"W	5°-49'-58"

