

PLAT OF SUBDIVISION
WATERFORD
AT
POWHATAN SECONDARY
PHASE ONE
BERKELEY DISTRICT
JAMES CITY COUNTY, VIRGINIA

DATE: 9/25/97
REVISED: 11/24/97

SHEET 4 OF 4

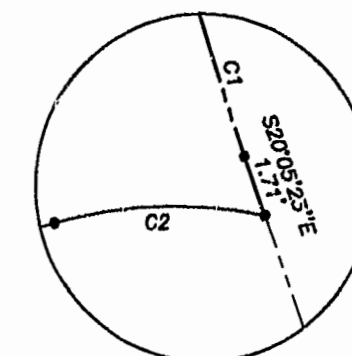
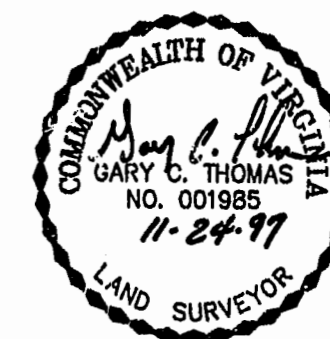
SCALE: 1"=40'

PROJECT NO: 97-008

DRAWN BY: PAUL MICHAEL



SLEDD & ASSOCIATES, P.C.
ENGINEERS PLANNERS SURVEYORS
11832 ROCK LANDING DRIVE, SUITE 203
NEWPORT NEWS, VIRGINIA 23606
(757) 873-3386



DETAIL-N.T.S.

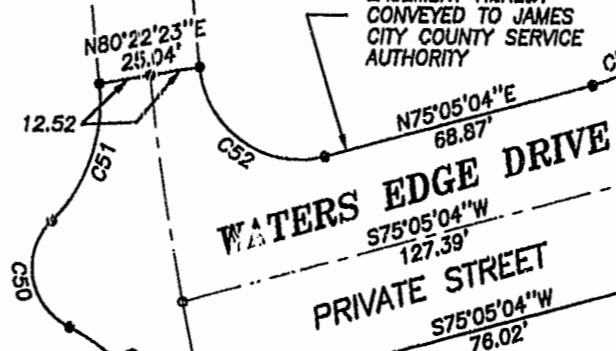
PLAT BOOK 66, PAGE 70



25' UTILITY
EASEMENT HEREBY
CONVEYED TO JAMES
CITY COUNTY SERVICE
AUTHORITY
SEE SHEET 2

VARIABLE WIDTH UTILITY
EASEMENT HEREBY
CONVEYED TO JAMES
CITY COUNTY SERVICE
AUTHORITY

POWHATAN SECONDARY
60' R/W



SEE DETAIL
BELOW

FUTURE DEVELOPMENT

FUTURE DEVELOPMENT

MATCH LINE - SEE SHEET 2

WATERS EDGE DRIVE
25' PRIVATE R/W

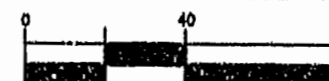
VARIABLE WIDTH UTILITY
EASEMENT HEREBY
CONVEYED TO JAMES
CITY COUNTY SERVICE
AUTHORITY

25' UTILITY
EASEMENT HEREBY
CONVEYED TO JAMES
CITY COUNTY SERVICE
AUTHORITY
SEE SHEET 2

RECORDED
INDEXED 11/24/97

Recorded 18 day of December 1997
DOCUMENT # 27001998d 12/35
G. J. Thomas

GRAPHIC SCALE



SCALE: 1"= 40'