

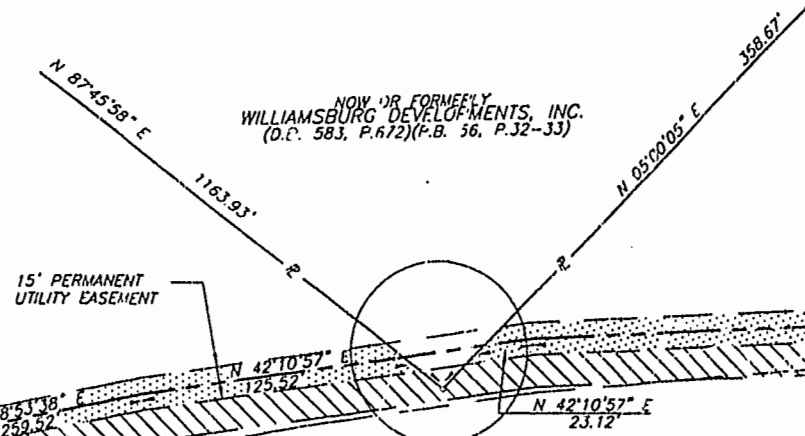
NOW OR FORMERLY BALL METAL BEVERAGE CONTAINER CORP. (D.B. 773, P.340) (P.R. 28, P.59-60)

VARIABLE WIDTH VEPCO GAS LINE EASEMENT (D.B. 77, P.47)

NOW OR FORMERLY INDUSTRIAL DEVELOPMENT AUTHORITY OF JAMES CITY COUNTY, VIRGINIA (D.B. 586, P.454)(P.E. 55, P.43)

INSERT "C" NOT TO SCALE

NOW OR FORMERLY WILLIAMSBURG DEVELOPMENTS, INC. (D.P. 583, P.672)(P.B. 56, P.32-33)



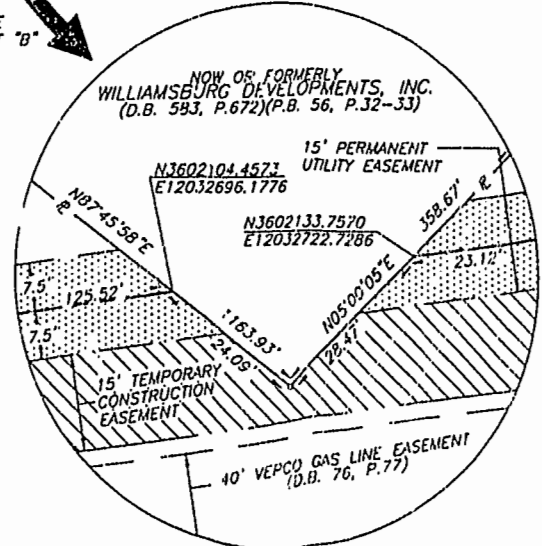
SEE INSERT "C"

MATCH LINE - SEE SHEET 1

15' TEMPORARY CONSTRUCTION EASEMENT

NOW OR FORMERLY BASF CORPORATION (D.B. 456, P. 624) (D.B. 682, P. 229) (P.B. 695, P. 318)

NOW OR FORMERLY INDUSTRIAL DEVELOPMENT AUTHORITY OF JAMES CITY COUNTY, VIRGINIA (D.B. 586, P.454)(P.B. 55, P.43)



11:14 AM Recorded 9 day of Oct. 1997 DOCUMENT # 97-0-16326

Clerk

PLAT RECORDED IN P.B. NO. 67, PAGE 58-60

LEGEND

- Diagonal hatching symbol: DENOTES AREA OF TEMPORARY CONSTRUCTION EASEMENT
- Dotted pattern symbol: DENOTES AREA OF PERMANENT EASEMENT

SEE SHEET 1 OF 2 FOR NOTES AND AREA

SHEET 2 OF 2 PLAT SHOWING EASEMENT TO BE CONVEYED FROM INDUSTRIAL DEVELOPMENT AUTHORITY OF JAMES CITY COUNTY, VIRGINIA ROBERTS DISTRICT - JAMES CITY COUNTY, VIRGINIA SCALE: 1"=50' MARCH 13, 1997 ROUSE-SIRINE ASSOCIATES, LTD. SURVEYORS AND MAPPING CONSULTANTS 333 OFFICE SQUARE LANE VIRGINIA BEACH, VIRGINIA 23462 GRAPHIC SCALE