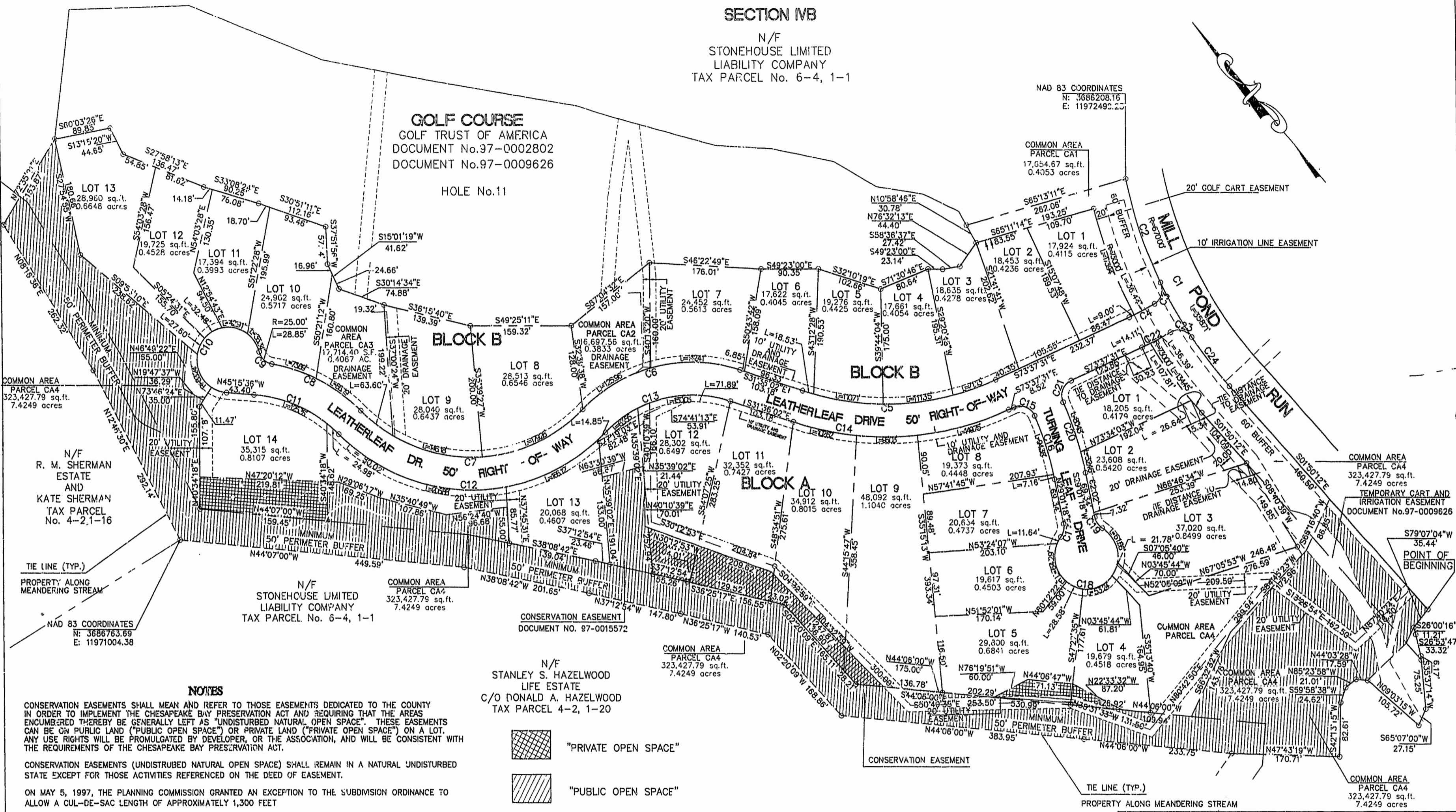


SECTION IVB  
N/F  
STONEHOUSE LIMITED  
LIABILITY COMPANY  
TAX PARCEL No. 6-4, 1-1

NAD 83 COORDINATES  
N: 3686208.16  
E: 11972492.25

GOLF COURSE  
GOLF TRUST OF AMERICA  
DOCUMENT No.97-0002802  
DOCUMENT No.97-0009626

HOLE No.11



N/F  
R. M. SHERMAN  
ESTATE  
AND  
KATE SHERMAN  
TAX PARCEL  
No. 4-2.1-16

N/F  
STONEHOUSE LIMITED  
LIABILITY COMPANY  
TAX PARCEL No. 6-4, 1-1

N/F  
STANLEY S. HAZELWOOD  
LIFE ESTATE  
C/O DONALD A. HAZELWOOD  
TAX PARCEL 4-2, 1-20

NOTES

CONSERVATION EASEMENTS SHALL MEAN AND REFER TO THOSE EASEMENTS DEDICATED TO THE COUNTY IN ORDER TO IMPLEMENT THE CHESAPEAKE BAY PRESERVATION ACT AND REQUIRING THAT THE AREAS ENCUMBERED THEREBY BE GENERALLY LEFT AS "UNDISTURBED NATURAL OPEN SPACE". THESE EASEMENTS CAN BE ON PUBLIC LAND ("PUBLIC OPEN SPACE") OR PRIVATE LAND ("PRIVATE OPEN SPACE") ON A LOT. ANY USE RIGHTS WILL BE PROMULGATED BY DEVELOPER, OR THE ASSOCIATION, AND WILL BE CONSISTENT WITH THE REQUIREMENTS OF THE CHESAPEAKE BAY PRESERVATION ACT.

CONSERVATION EASEMENTS (UNDISTURBED NATURAL OPEN SPACE) SHALL REMAIN IN A NATURAL UNDISTURBED STATE EXCEPT FOR THOSE ACTIVITIES REFERENCED ON THE DEED OF EASEMENT.

ON MAY 5, 1997, THE PLANNING COMMISSION GRANTED AN EXCEPTION TO THE SUBDIVISION ORDINANCE TO ALLOW A CUL-DE-SAC LENGTH OF APPROXIMATELY 1,300 FEET

COMMON AREAS ARE MORE PARTICULARLY DEFINED IN THE DECLARATION RECORDED IN DOCUMENT NO. 97-0015414, IN THE CLERK'S OFFICE OF THE CIRCUIT COURT OF JAMES CITY COUNTY

SETBACK REQUIREMENTS FOR LEATHERLEAF SUBDIVISION ARE SPECIFIED IN THE DESIGN CRITERIA STANDARDS AND GUIDELINES FOR STONEHOUSE, VIRGINIA AS PREPARED BY STONEHOUSE LIMITED LIABILITY COMPANY, PUBLISHED BY THE ENVIRONMENTAL REVIEW COMMITTEE.

UTILITY AND OTHER EASEMENTS ARE RESERVED PERSUANT TO THE DECLARATION RECORDED IN DOCUMENT NO. 97-0015414, IN THE CLERK'S OFFICE OF THE CIRCUIT COURT OF JAMES CITY COUNTY AS THE SAME MAY BE AMENDED OR SUPPLEMENTED FROM TIME TO TIME.

ALL IRRIGATION EASEMENTS SHOWN ON THIS PLAT WERE DEDICATED TO GOLF TRUST OF AMERICA, L.P. BY DOCUMENT NO. 97-0009626 CURRICY COURT, WILLIAMSBURG / JAMES CITY COUNTY.

ALL UTILITY EASEMENTS SHOWN ON THIS PLAT ARE HEREBY DEDICATED TO THE JAMES CITY SERVICE AUTHORITY.

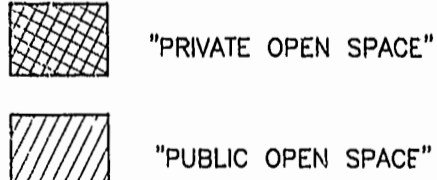
ALL DRAINAGE EASEMENTS SHOWN ON THIS PLAT ARE HEREBY DEDICATED TO STONEHOUSE, L.L.C.

THE VIRGINIA DEPARTMENT OF TRANSPORTATION IS HELD HARMLESS FROM ALL RESPONSIBILITY OF STORMWATER MANAGEMENT FACILITIES.

ALL ROADS ARE HEREBY DEDICATED FOR PUBLIC STREET PURPOSES.

ALL LOTS ARE SERVED BY PUBLIC WATER AND SANITARY SEWER.

ALL OTHER UTILITIES, ELECTRIC POWER, TELEPHONE, NATURAL GAS, ETC. SHALL BE PLACED UNDERGROUND.



SECTION IV-A  
AREA TABULATIONS

Table with 2 columns: Category and Area. Includes rows for TOTAL AREA (26.3939 ACRES), COMMON AREA (8.6202 ACRES), LOTS (27 LOTS) (15.3473 ACRES), and R/W (2.4264 ACRES).

Table with 7 columns: CURVE, RADIUS, LENGTH, TANGENT, CHORD, BEARING, DELTA. Lists curve data for C1 through C24.

PLAT RECORDED IN  
P.B. NO. 67 PAGE 56 & 57

9:55 AM  
Recorded 7 day of October  
DOCUMENT # 97-0015414  
Heather S. Walsh, Clerk  
By Claudia M. Benkowitz, Day Clerk

