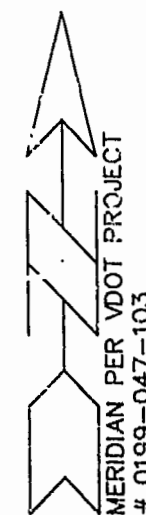


NOTES:

- 1) WETLANDS DELINEATED BY DOMINION ENVIRONMENTAL CONSULTANTS, INC. AND FIELD LOCATED BY RICHMOND ENGINEERING, INC.
- 2) MONUMENTS WILL BE INSTALLED AS REQUIRED IN SECTION 17-34 THROUGH 17-36 OF THE SUBDIVISION ORDINANCE. AT LEAST TWO NEW OR EXISTING MONUMENTS AT EXTERIOR SUBDIVISION BOUNDARIES SHALL BE REFERENCED TO THE COUNTY GEODETIC CONTROL NETWORK.
- 3) IN ACCORDANCE WITH SECTION 17-33 OF THE SUBDIVISION ORDINANCE, ALL UTILITIES SHALL BE PLACED UNDERGROUND.
- 4) EXISTING MONUMENTS AT THE SUBDIVISION BOUNDARY ARE REFERENCED TO JAMES CITY COUNTY MONUMENT STATION NO. 308 (NAD27).
- 5) ANY OLD WELLS ON SITE SHALL BE PROPERLY ABANDONED ACCORDING TO STATE PRIVATE WELL REGULATIONS.
- 6) NATURAL OPEN SPACE EASEMENTS SHALL REMAIN IN A NATURAL STATE EXCEPT FOR THOSE ACTIVITIES REFERENCED ON THE DEED OF EASEMENT.
- 7) WETLANDS & LAND WITHIN THE RESOURCE PROTECTION AREAS SHALL REMAIN IN A NATURAL STATE EXCEPT FOR THOSE ACTIVITIES PERMITTED BY SECTION 19B-9C(1) OF THE JAMES CITY COUNTY CODE.
- 8) UNLESS OTHERWISE NOTED, ALL DRAINAGE EASEMENTS DESIGNATED ON THIS PLAT SHALL BE PRIVATE.

THE VILLAGES AT WESTMINSTER PHASE I, SECTION I

BERKELEY DISTRICT
JAMES CITY COUNTY, VIRGINIA
DATE: DECEMBER 12, 1996 SCALE: 1"=100'



ROUTE 60
LIMITED ACCESS
DB 365 @ PG 821

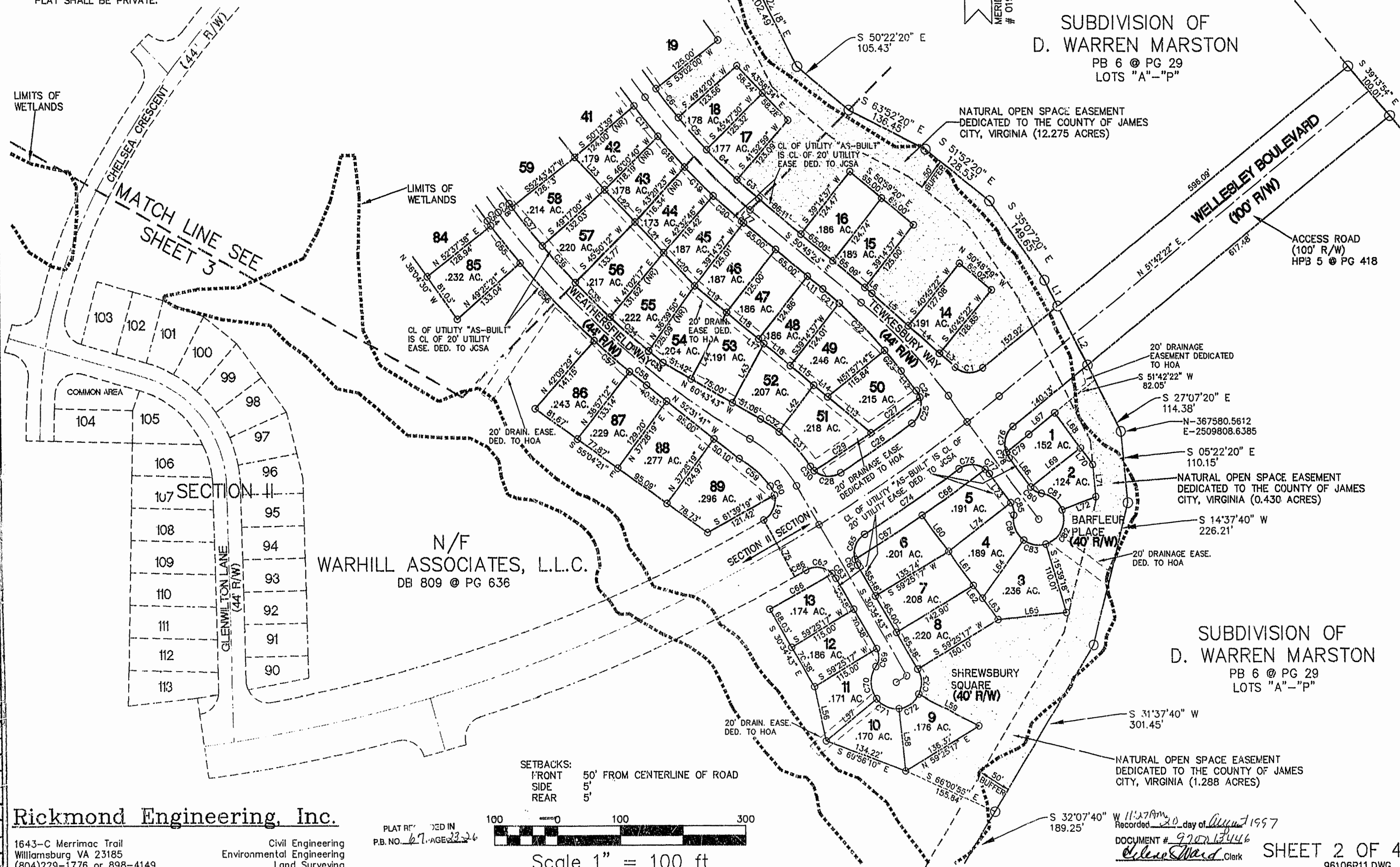
SUBDIVISION OF
D. WARREN MARSTON
PB 6 @ PG 29
LOTS "A"-"P"

NATURAL OPEN SPACE EASEMENT
DEDICATED TO THE COUNTY OF JAMES
CITY, VIRGINIA (12.275 ACRES)

ACCESS ROAD
(100' R/W)
HPB 5 @ PG 418

SUBDIVISION OF
D. WARREN MARSTON
PB 6 @ PG 29
LOTS "A"-"P"

NATURAL OPEN SPACE EASEMENT
DEDICATED TO THE COUNTY OF JAMES
CITY, VIRGINIA (1.288 ACRES)

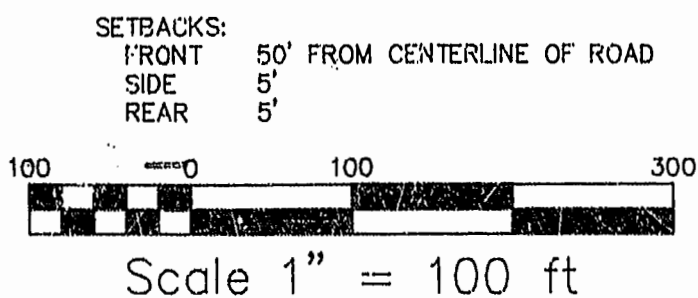


Rickmond Engineering, Inc.

1643-C Merrimac Trail
Williamsburg, VA 23185
(804)229-1776 or 898-4149

Civil Engineering
Environmental Engineering
Land Surveying

PLAT RECORDED IN
P.B. NO. 67, PAGE 2326



Recorded 11:27 AM day of August 1997
DOCUMENT # 970113446
Clerk

SHEET 2 OF 4
96106P11.DWG