

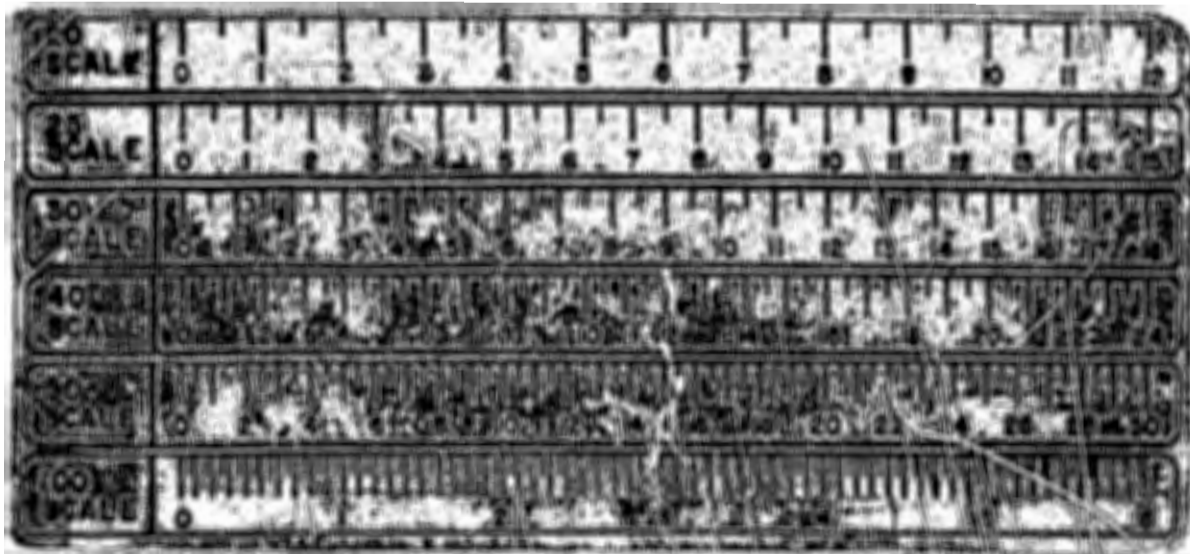
MATCHLINE SHEET 2



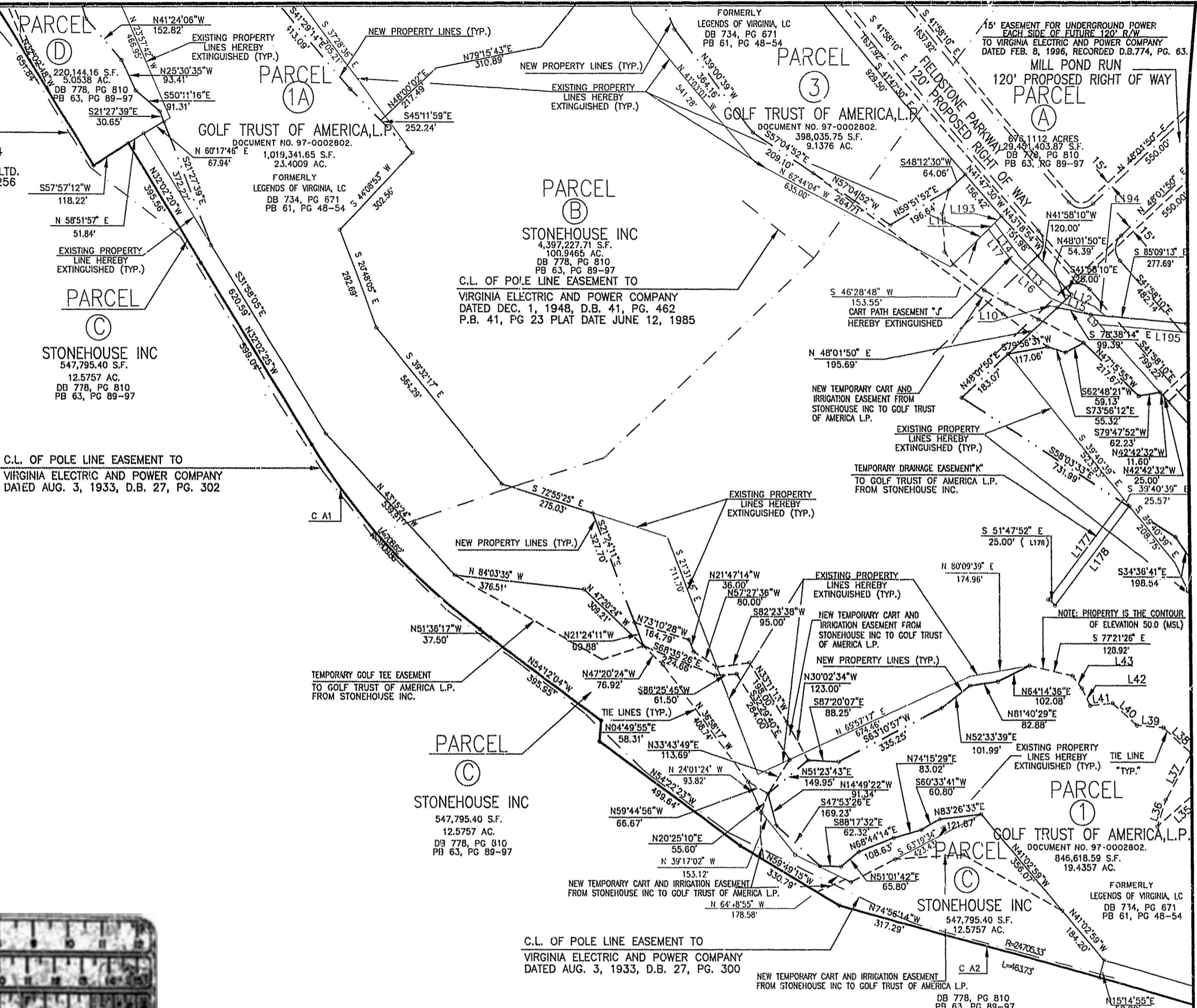
60 MILES TO I-64
ROUTE 30

C.L. OF POLE LINE EASEMENT TO
VIRGINIA ELECTRIC AND POWER COMPANY
DATED JULY 31, 1933, D.B. 27, PG. 304
C&P TELEPHONE COMPANY OF VIRGINIA LTD.
DATED MARCH 15, 1934, D.B. 28, PG. 256

C.L. OF POLE LINE EASEMENT TO
VIRGINIA ELECTRIC AND POWER COMPANY
DATED AUG. 3, 1933, D.B. 27, PG. 302



CURVE	RADIUS	LENGTH	TANGENT	CHORD	BEARING	DELTA
C A1	1809.86'	708.64'	358.92'	704.12'	N43°15'21"W	22°26'02"
C A2	24705.33'	1675.70'	838.17'	1673.38'	S73°53'01"E	03°53'10"



PLAT RECORDED IN
PB 66, PAGE 89-93

GRAPHIC SCALE SCALE: 1" = 200'
100 0 50 100 200 400

DATE: 05/05/97
SHEET 3 OF 5

1:11 p.m.
Recorded 20th day of June 1997
DOCUMENT # 970019627
Helena S. Ward, Clerk of Circuit Court
By: Dawn Q. M... Reg. Clerk

MATCHLINE SHEET 4