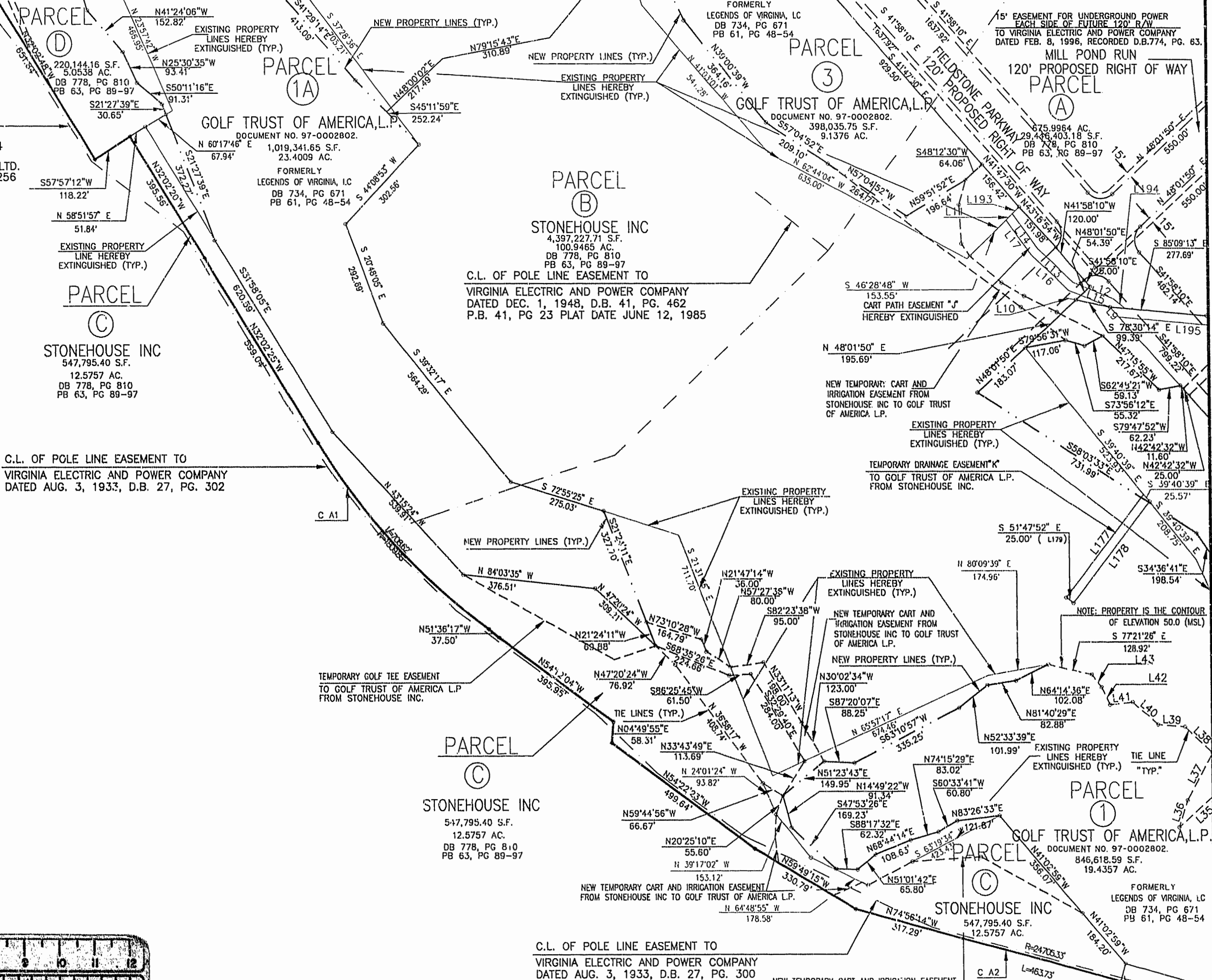


ROUTE 30
60 MILES TO I-64

C.L. OF POLE LINE EASEMENT TO
VIRGINIA ELECTRIC AND POWER COMPANY
DATED JULY 31, 1933, D.B. 27, PG. 304

C&P TELEPHONE COMPANY OF VIRGINIA LTD.
DATED MARCH 15, 1934, D.B. 28, PG. 256



C.L. OF POLE LINE EASEMENT TO
VIRGINIA ELECTRIC AND POWER COMPANY
DATED AUG. 3, 1933, D.B. 27, PG. 302

C.L. OF POLE LINE EASEMENT TO
VIRGINIA ELECTRIC AND POWER COMPANY
DATED DEC. 1, 1948, D.B. 41, PG. 462
P.B. 41, PG 23 PLAT DATE JUNE 12, 1985

NEW TEMPORARY CART AND
IRRIGATION EASEMENT FROM
STONEHOUSE INC TO GOLF TRUST
OF AMERICA L.P.

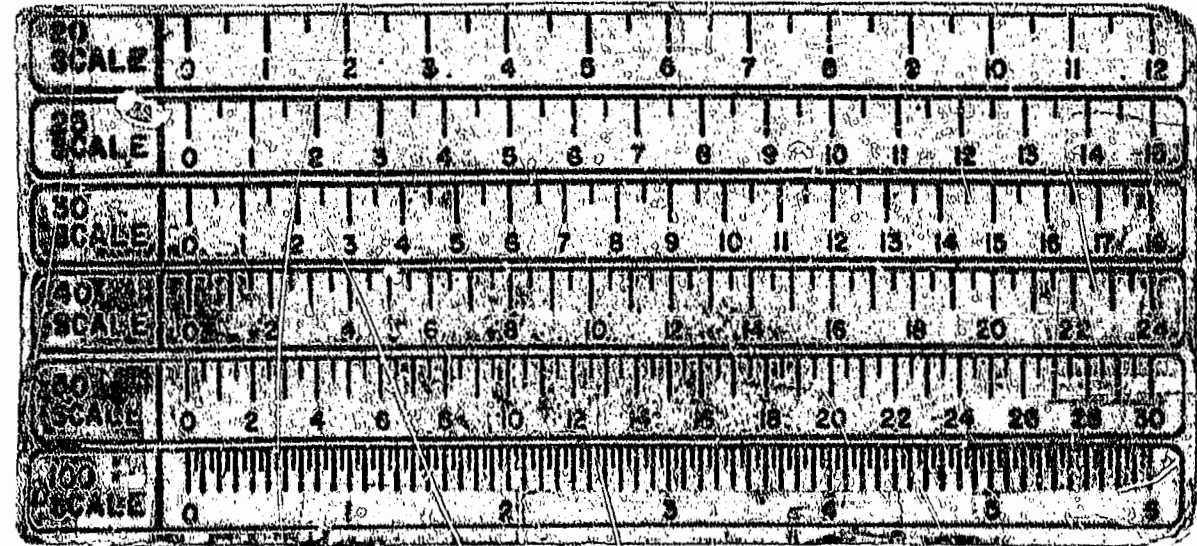
TEMPORARY DRAINAGE EASEMENT 'K'
TO GOLF TRUST OF AMERICA L.P.
FROM STONEHOUSE INC.

TEMPORARY GOLF TEE EASEMENT
TO GOLF TRUST OF AMERICA L.P.
FROM STONEHOUSE INC.

NEW TEMPORARY CART AND
IRRIGATION EASEMENT FROM
STONEHOUSE INC TO GOLF TRUST
OF AMERICA L.P.

C.L. OF POLE LINE EASEMENT TO
VIRGINIA ELECTRIC AND POWER COMPANY
DATED AUG. 3, 1933, D.B. 27, PG. 300

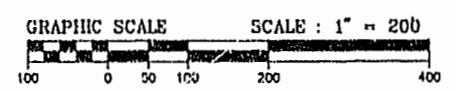
NEW TEMPORARY CART AND IRRIGATION EASEMENT
FROM STONEHOUSE INC TO GOLF TRUST OF AMERICA L.P.



CURVE	RADIUS	LENGTH	TANGENT	CHORD	BEARING	DELTA
C A1	1809.86'	708.64'	358.92'	704.12'	N43°15'21"W	22°26'02"
C A2	24705.33'	1675.70'	838.17'	1675.38'	S73°53'01"E	03°53'10"

12:58 p.m.
RECORDED 204... June 1997
DOCUMENT # 970069626
Helene S. Ward, Clerk of Circuit Court - clerk
By: [Signature] Master of Deeds

PLAT RECORDED IN
PAGE 80-88



DATE: 05/05/97
SHEET 3 OF 9