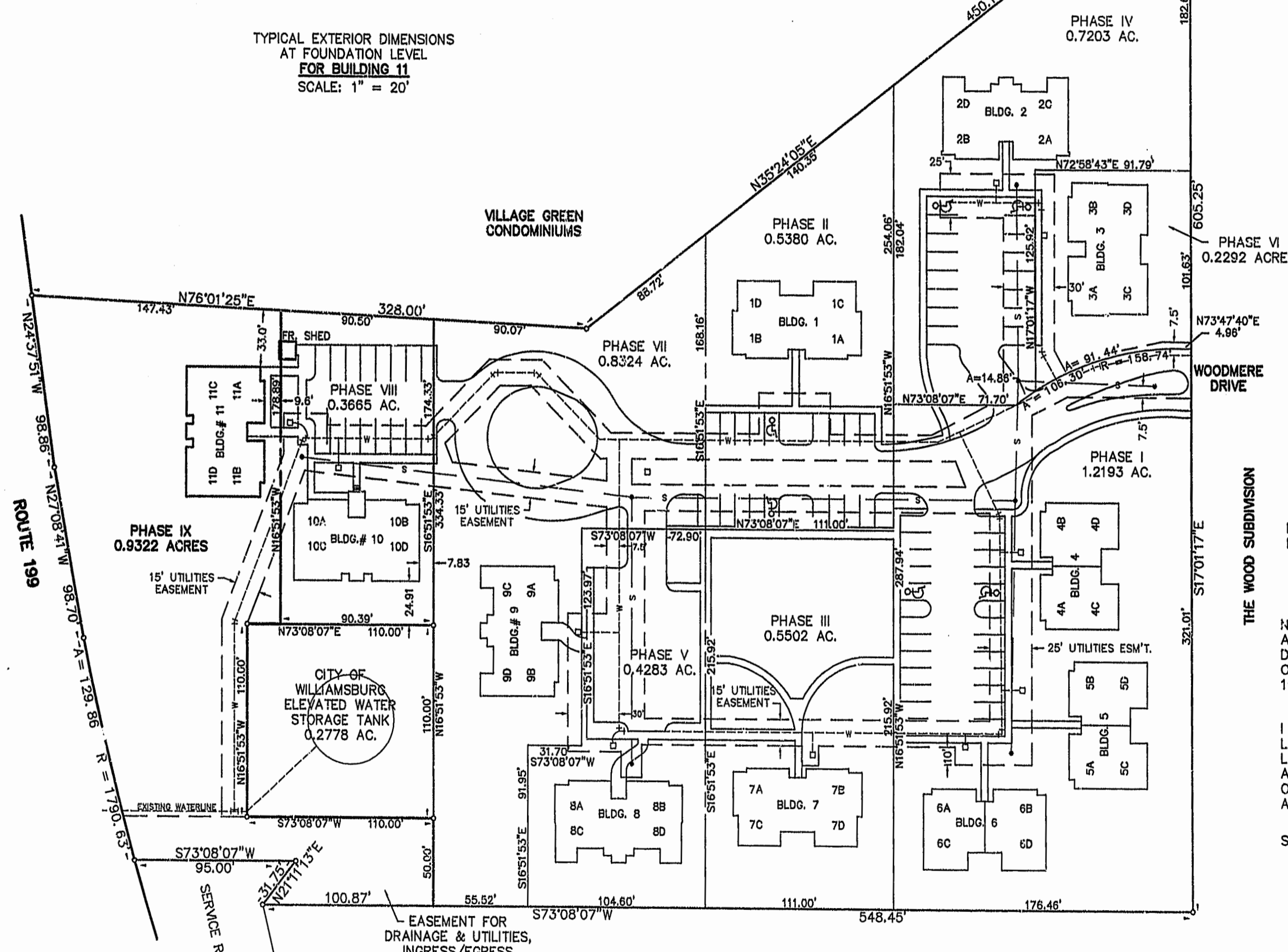


EXHIBIT B  
CONDOMINIUM PLAT  
THE WOODLANDS A CONDOMINIUM  
PHASE IX, BUILDING NO. 11  
OWNER/DEVELOPER: S.W.N. ASSOCIATES  
THE CITY OF WILLIAMSBURG, VIRGINIA  
SCALE: 1" = 50' MARCH 24, 1997  
0 25 50 100 150 200 FEET  
GRAPHIC SCALE

THE SIRINE GROUP, LTD.  
SURVEYORS • ENGINEERS • PLANNERS  
P.O. BOX 450, ROUTE 17  
WHITE MARSH, VIRGINIA 23183



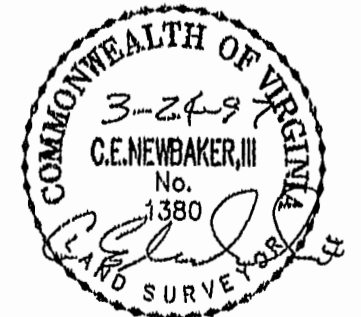
THE WOOD SUBDIVISION

--- DENOTES PHASE BOUNDARY: ---

NOTE:  
ALL UTILITY EASEMENTS SHOWN HEREON ARE HEREBY DEDICATED TO THE CITY OF WILLIAMSBURG. (SEE "PLAT OF DRAINAGE & UTILITIES EASEMENTS", DATED AUGUST 1987), D.B.81, P.423.

I HEREBY CERTIFY THAT I HAVE SURVEYED THE SUBMITTED LAND AND DO FURTHER CERTIFY THAT THIS PLAT SHOWING LOCATIONS AND DIMENSIONS OF THE SUBMITTED LAND IS ACCURATE AND THE PLAT COMPLIES WITH THE PROVISIONS OF SECTION 55-79.58 (a) OF THE CODE OF VIRGINIA AS AMENDED. ALL UNITS HAVE BEEN SUBSTANTIALLY COMPLETED.

SIGNED: *C.E. Newbaker, III* DATE: 3-24-97  
C.E. NEWBAKER, III  
L.S. # 1380



11:14 AM  
Recorded 1 day of April 1997  
DOCUMENT # 975722353  
*Beleno* Clerk

PLAT RECORDED IN  
P.B. NO. 66, PAGE 32

