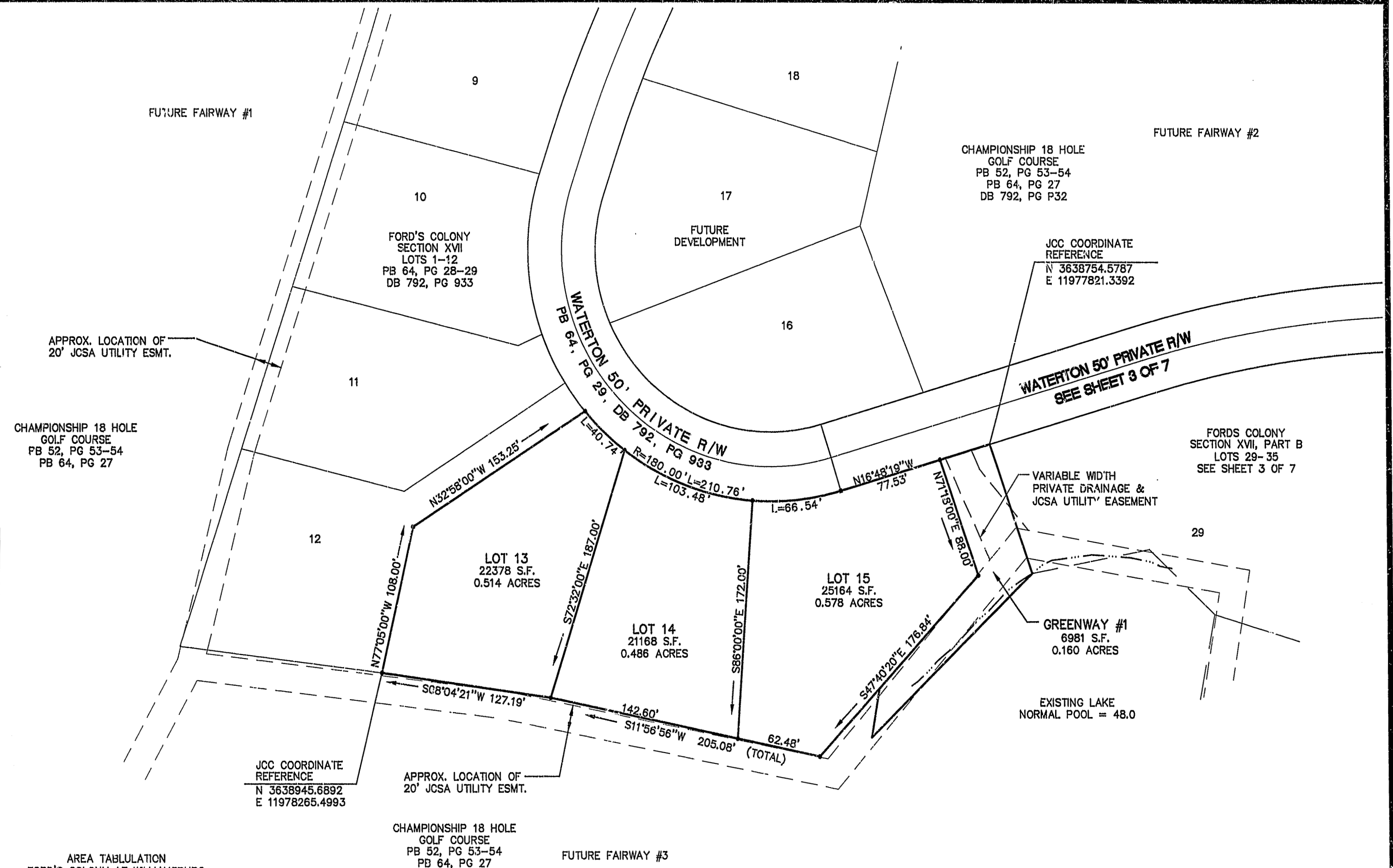


12.03.96-11:4: SC1170P01



AREA TABULATION
FORD'S COLONY AT WILLIAMSBURG
SECTION XVII
LOTS 13 - 15

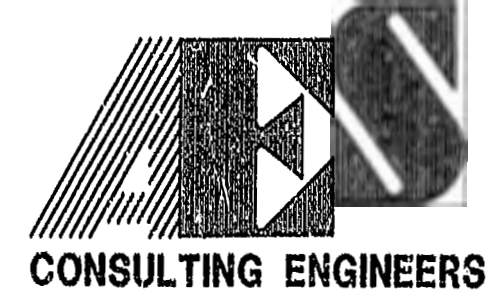
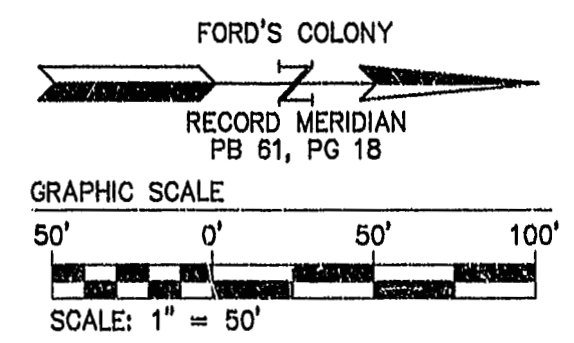
AREA OF RESIDENTIAL LOTS	68,710 S.F.	1.577 ACRES
AREA OF GREENWAY	6,981 S.F.	0.160 ACRES
TOTAL ARE SUBDIVIDED	75,691 S.F.	1.737 ACRES
NUMBER OF LOTS	3	
AVERAGE LOT SIZE	22,903 S.F.	0.526 ACRES
SMALLEST LOT (14)	21,168 S.F.	0.486 ACRES
LARGEST LOT (15)	25,164 S.F.	0.578 ACRES
LOTS PER ACRE	1.73	

LOT CURVE TABLE						
NUMBER	DELTA	RADIUS	LENGTH	TANGENT	CHORD	CHORD BEARING
13	12°58'06"	180.00	40.74	20.46	40.65	N43°48'02"E
14	32°56'24"	180.00	103.48	53.22	102.07	N20°50'47"E
15	21°10'54"	180.00	66.54	33.66	66.17	N06°12'52"W

NOTE:

- UNLESS OTHERWISE NOTED, ALL DRAINAGE EASEMENTS SHALL BE PRIVATE.
- JAMES CITY COUNTY (JCC) GEODECTIC COORDINATE REFERENCES ARE FOR GIS USE ONLY. METES AND BOUNDS ARE BASED ON FORD'S COLONY RECORD MERIDIAN.

PLAT RECORDED IN
P.B. NO. 66, PAGE 6-12



5248 Olde Towne Road, Suite 1
Williamsburg, Virginia 23188
(804) 253-0040
Fax (804) 220-8994

PLAT OF SUBDIVISION
**FORD'S COLONY
AT WILLIAMSBURG**
SECTION XVII, PART A
LOTS 13 - 15

POWATAN DISTRICT JAMES CITY COUNTY VIRGINIA



No.	DATE	REVISION / COMMENT / NOTE	BY

Designed CAH	Drawn KEG
Scale 1"=50'	Date 11/22/96
Project No. 5652-17	
Drawing No. 2 OF 7	