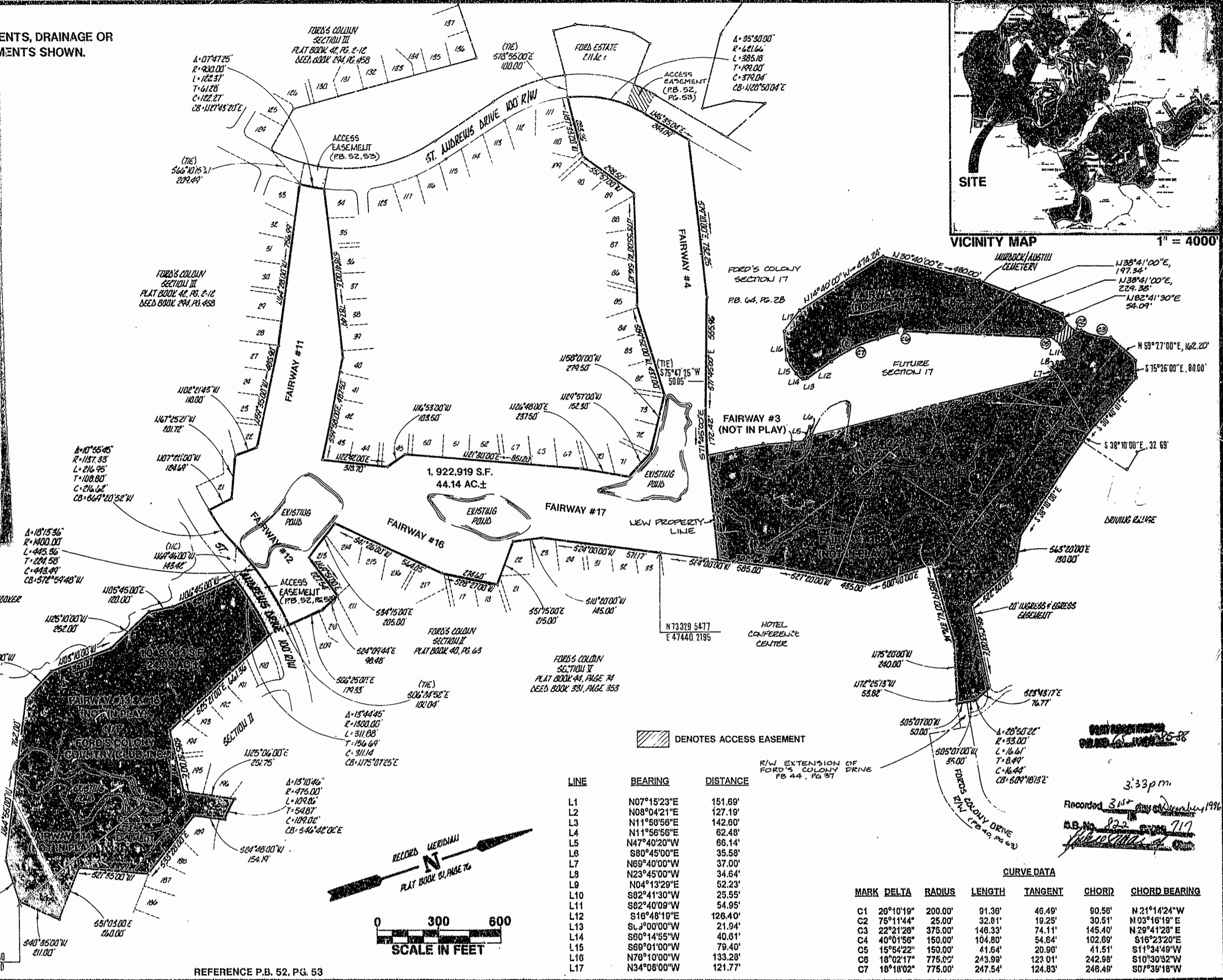
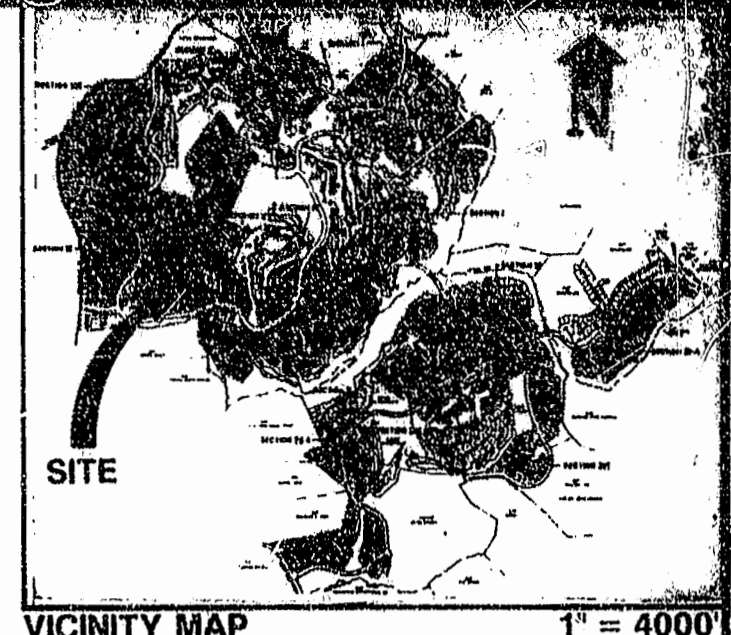
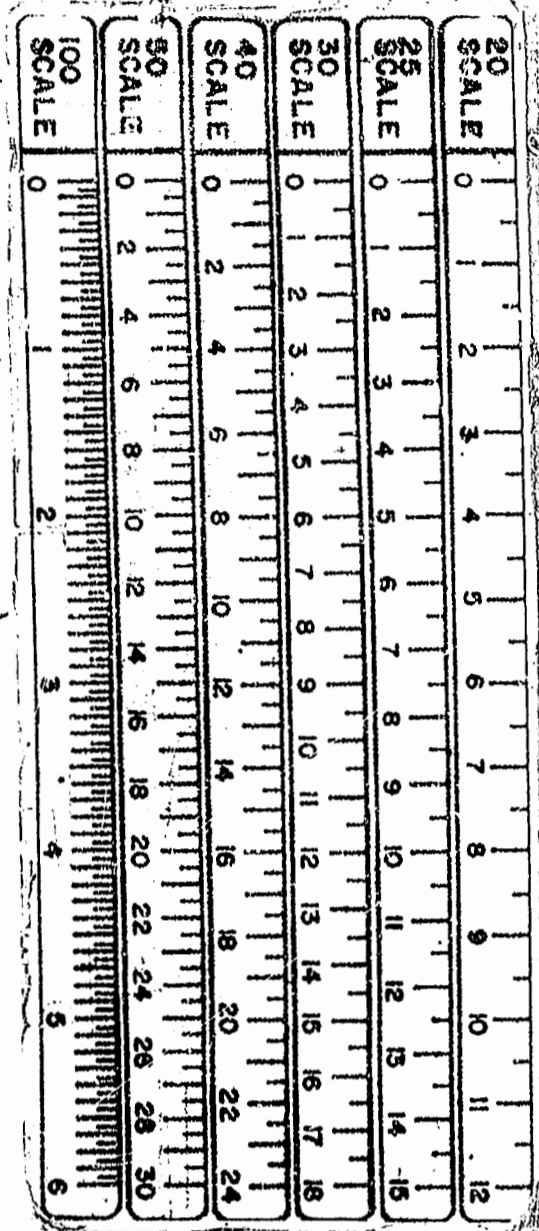


NOTE: NO IMPROVEMENTS, DRAINAGE OR UTILITY EASEMENTS SHOWN.

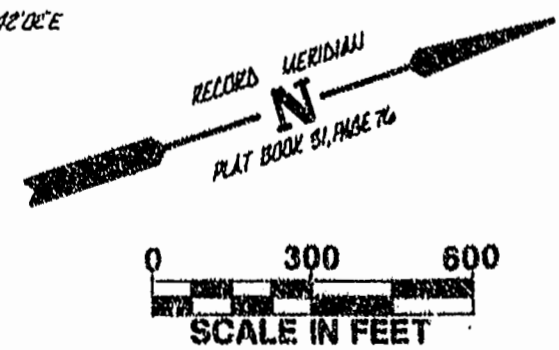


▨ DENOTES ACCESS EASEMENT

R/W EXTENSION OF FORD'S COLONY DRIVE PB 44, PG 57

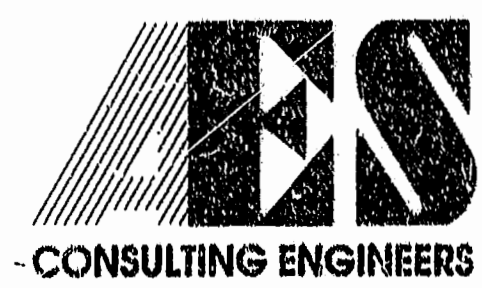
| LINE | BEARING | DISTANCE |
|------|-------------|----------|
| L1 | N07°15'23"E | 151.69' |
| L2 | N08°04'21"E | 127.19' |
| L3 | N11°50'58"E | 142.60' |
| L4 | N11°56'56"E | 62.48' |
| L5 | N47°40'20"W | 66.14' |
| L6 | S80°45'00"E | 35.58' |
| L7 | N69°40'00"W | 37.00' |
| L8 | N23°45'00"W | 34.64' |
| L9 | N04°13'29"E | 52.23' |
| L10 | S82°41'30"W | 25.55' |
| L11 | S82°40'08"W | 54.95' |
| L12 | S16°48'19"E | 126.40' |
| L13 | S03°00'00"W | 21.94' |
| L14 | S60°14'55"W | 40.61' |
| L15 | S69°01'00"W | 79.40' |
| L16 | N78°10'00"W | 133.28' |
| L17 | N34°08'00"W | 121.77' |

| MARK | DELTA | RADIUS | LENGTH | TANGENT | CHORD | CHORD BEARING |
|------|-----------|---------|---------|---------|---------|---------------|
| C1 | 26°10'19" | 200.00' | 91.36' | 46.49' | 90.55' | N21°14'24"W |
| C2 | 75°11'44" | 25.00' | 32.81' | 19.25' | 30.51' | N03°16'19"E |
| C3 | 22°21'28" | 375.00' | 146.33' | 74.11' | 145.40' | N29°41'28"E |
| C4 | 40°01'56" | 150.00' | 104.80' | 54.64' | 102.69' | S16°23'20"E |
| C5 | 15°54'22" | 150.00' | 41.64' | 20.96' | 41.51' | S11°34'49"W |
| C6 | 18°02'17" | 775.00' | 243.99' | 123.01' | 242.98' | S10°30'32"W |
| C7 | 18°18'02" | 775.00' | 247.54' | 124.83' | 246.49' | S07°39'18"W |



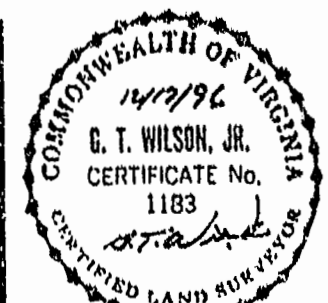
REFERENCE P.B. 52, PG. 53

3:33 pm
 Recorded 3rd day of December, 1996
 S.B. No. 822
 1/10/96



5248 Olde Towne Road, Suite 1
 Williamsburg, Virginia 23188
 (804) 253-0040
 Fax (804) 220-8994

PLAT OF SUBDIVISION SHOWING
 CHAMPIONSHIP 18 HOLE GOLF COURSE
 FAIRWAY NO. 1, 2, 3, 13, 14, 15 & 18
 OWNED BY REALTEC, INCORPORATED



| No. | DATE | REVISION / COMMENT / NOTE | BY |
|-----|------|---------------------------|----|
| | | | |
| | | | |
| | | | |

| | |
|-----------------------|------------------|
| Designed SOW | Drawn RMJ |
| Scale 1"=300' | Date 12/17/96 |
| Project No. 5652 | |
| Drawing No. 2 of 4 | |