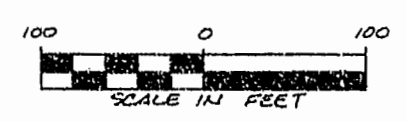
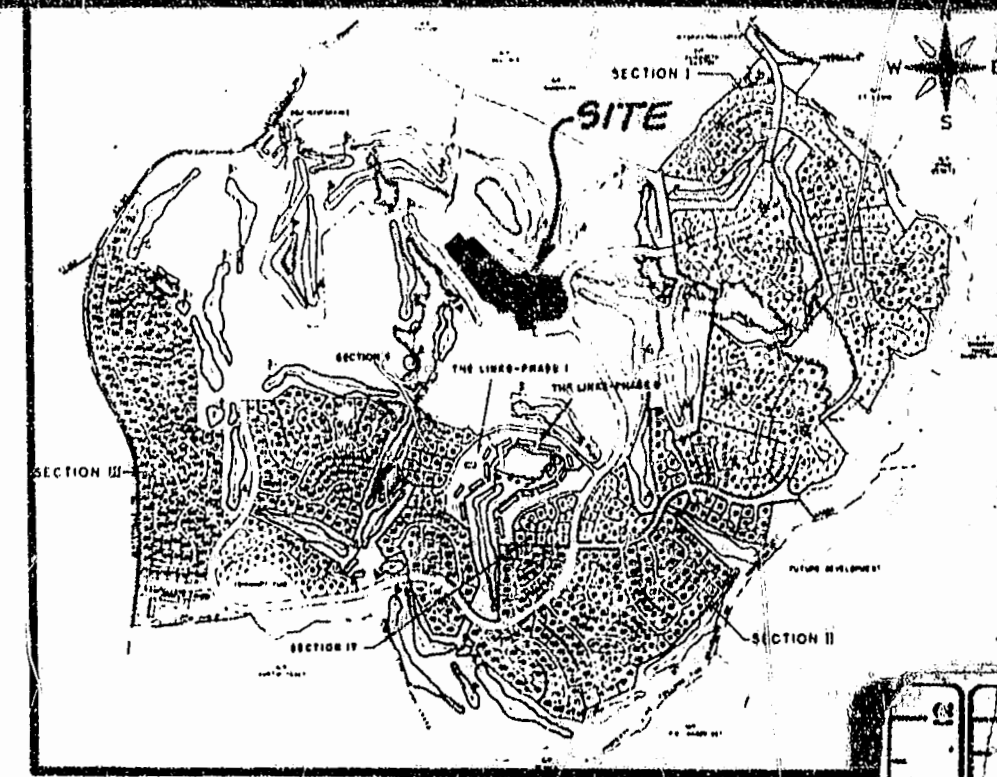


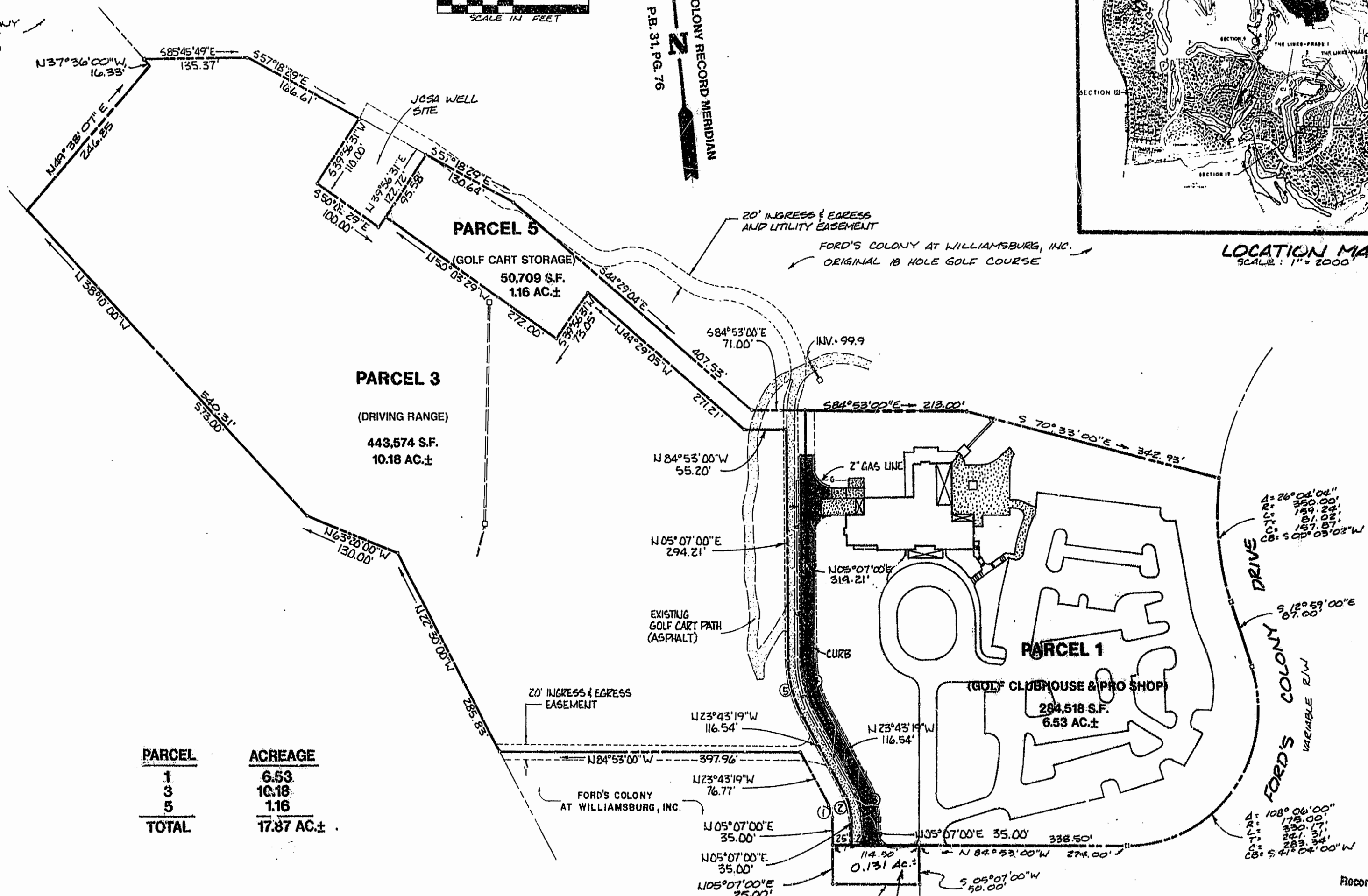
FORD'S COLONY SECTION 17 (FUTURE)



FORD'S COLONY RECORD MERIDIAN  
P.B. 31, PG. 76

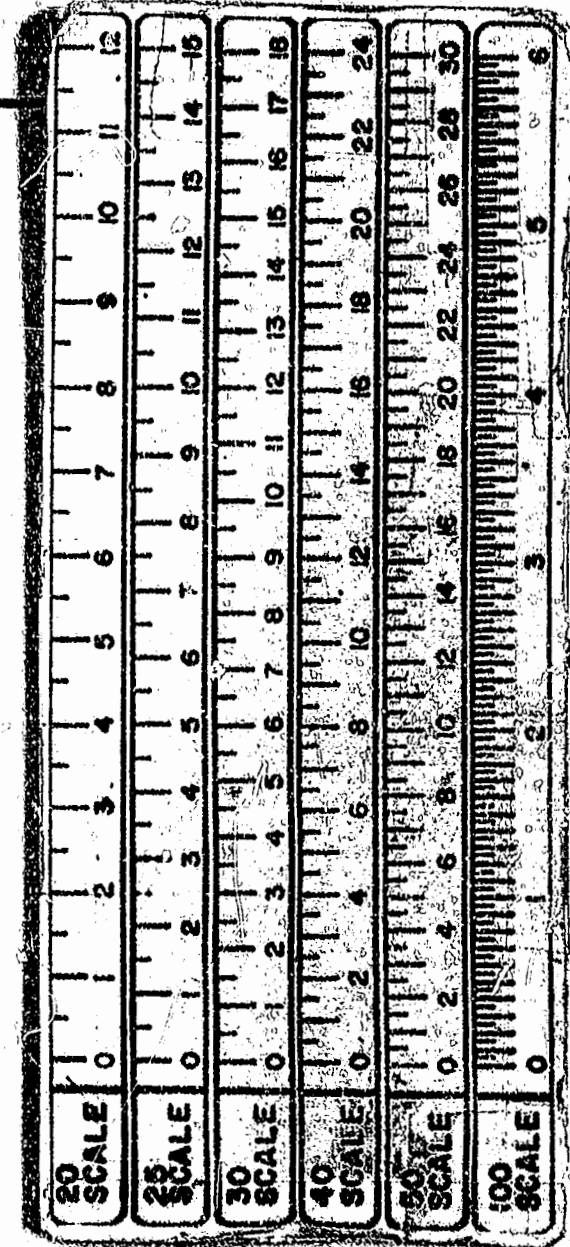


LOCATION MAP  
SCALE: 1" = 2000'



PARCEL	ACREAGE
1	6.53
3	10.18
5	1.16
<b>TOTAL</b>	<b>17.87 AC.±</b>

NO.	BEARS	RADIUS	LENGTH	TANGENT	CHORD	CHORD BEARING
1	28°50'19"	33.00'	16.61'	8.49'	16.44'	N09°18'09"W
2	28°50'19"	58.00'	29.19'	14.91'	28.89'	N09°18'09"W
3	28°50'19"	83.00'	41.78'	21.34'	41.34'	N09°18'09"W
4	28°50'19"	120.00'	60.40'	30.85'	59.76'	N09°18'09"W
5	28°50'19"	145.00'	72.98'	37.28'	72.21'	N09°18'09"W

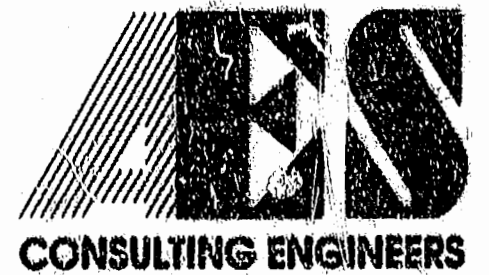


DRIVE  
FORD'S COLONY DRIVE  
VARIABLE R/W

PLAT RECORDED IN  
P.B. NO. 61, PAGE 77, 81  
3:55 PM  
Recorded 31st Dec 1996  
P.B. No. 81, PAGE 77

NO BOUNDARY LINE ADJUSTMENTS ON THIS PLAT.

REFERENCES: P.B. 44, PG. 37  
P.B. 52, PG. 76



5248 Olde Towne Road, Suite 1  
Williamsburg, Virginia 23188  
(804) 253-0040  
Fax (804) 220-8994

**PLAT OF SURVEY  
AND BOUNDARY LINE ADJUSTMENT  
PREPARED FOR  
FORD'S COLONY COUNTRY CLUB, INC.  
PARCELS 1, 3, AND 5**



No.	DATE	REVISION / COMMENT / NOTE	BY

Designed SOW	Drawn RMJ
Scale 1" = 100'	Date 5/8/96
Project No. 5652	
Drawing No. 6 of 8	