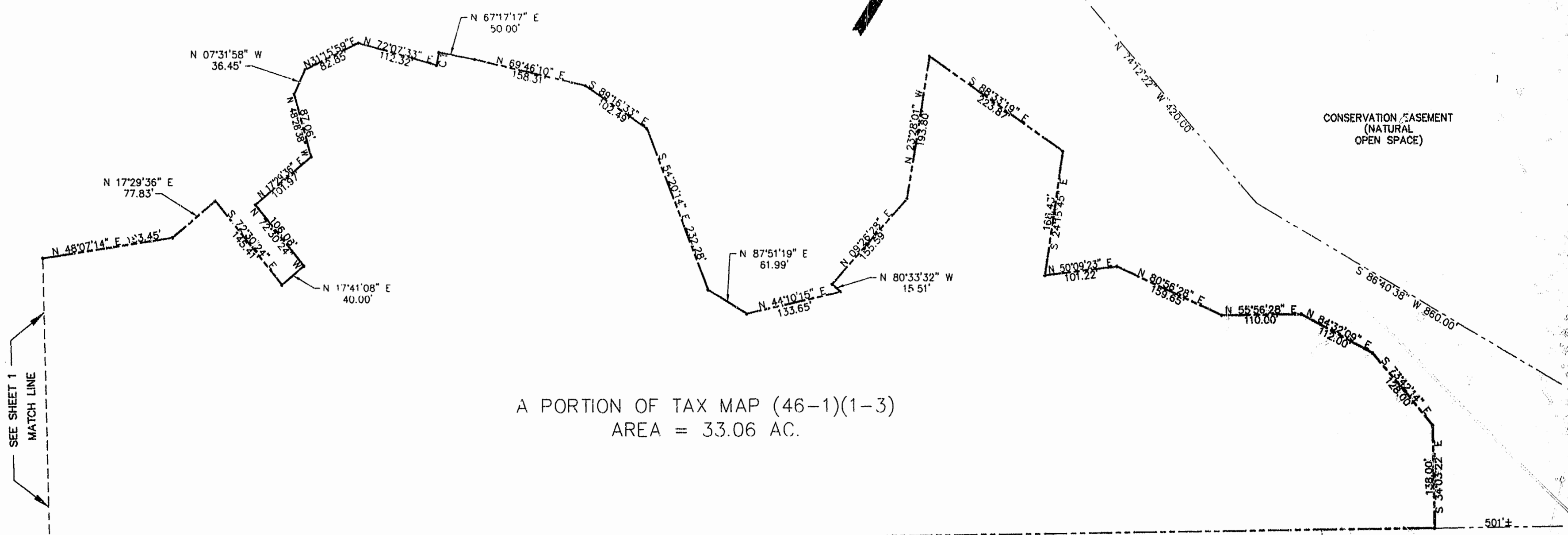
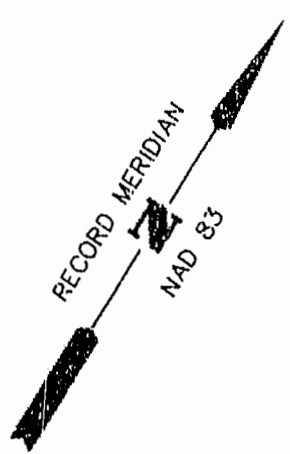


REMAINING PROPERTY OF
FRANCES M. & ALBERT L. WHITE, III
TM(46-1)(1-3)



SEE SHEET 1
MATCH LINE

N/F
THV LIMITED
LIABILITY CO.
D.B. 72B, PG. 203
"FOXFIELD"
TM (46-4)(3-1)

LOT 8
TM (46-4)(4-8)

LOT 7
TM (46-4)(4-7)

LOT 6
TM (46-4)(4-6)

JCSA
WELL
LOT

JAMESTOWN "1607"
SECTION "A"
PART 2
P.B. 32, PB. 78

JAMESTOWN "1607"
SECTION "A"
PART 3
P.B. 32, PB. 79

JAMESTOWN "1607"
SECTION "B"
P.B. 36, PB. 49

JAMESTOWN "1607"
SECTION "C"
P.B. 36, PB. 84

COMMON AREA
TM (46-4)(2-1)

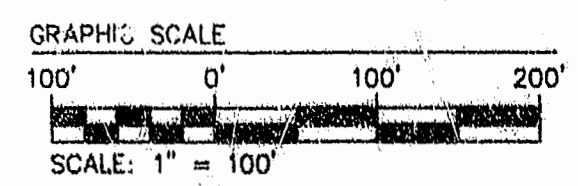
CONSERVATION EASEMENT
(NATURAL
OPEN SPACE)

LOT 13

LOT 12

ST. GEORGE'S HUNDRED
SECTION 5, PHASE, III
P.B. 59, PG. 16
TM(46-4)(5-1A)

NUMBER	DELTA	RADIUS	LENGTH	TANGENT	CHORD	CHORD BEARING
C1	01°50'23"	540.00	17.34	8.67	17.34	N 21°47'32" W



Recorded 3rd time December 1996
437
CHEROKEE STATION

2 OF 2 COMMISSION NO. 1951120	ENGINEERS • ARCHITECTS • SURVEYORS INTERIOR DESIGNERS • PLANNERS P.O. BOX 3505 WILLIAMSBURG, VIRGINIA 23187 (804)253-0673 (804)874-5015	REF.	SUBDIVISION PLAT MAINLAND FARM OWNER/DEVELOPER: FRANCES M. WHITE & ALBERT L. WHITE, III POWHATAN DISTRICT, JAMES CITY COUNTY VIRGINIA	
			DATE 11/25/96	DESIGNED TCS

CREWING: PROPLETING
DATE: 12/18/96
PLOT SCALE: 1" = 100'