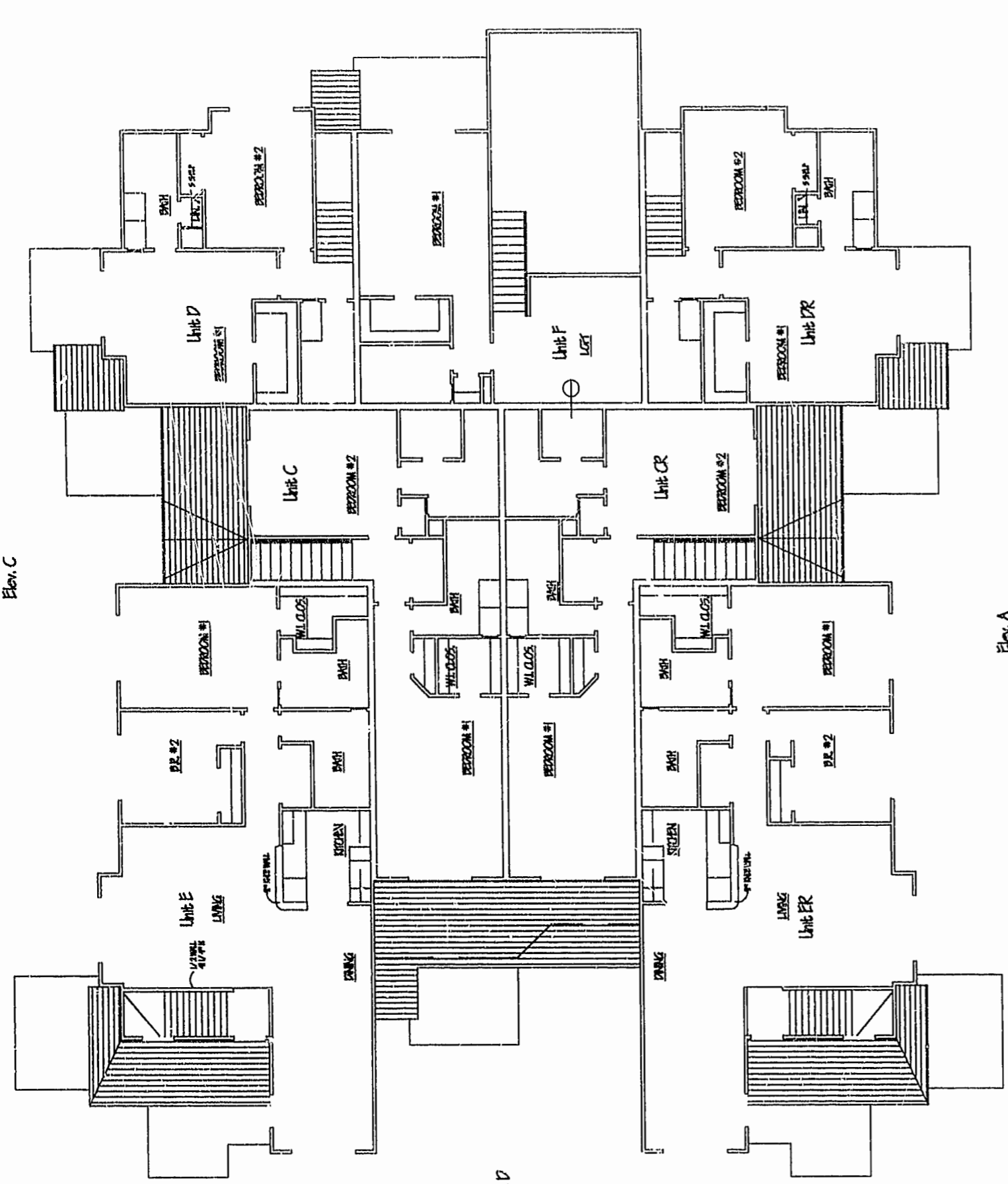
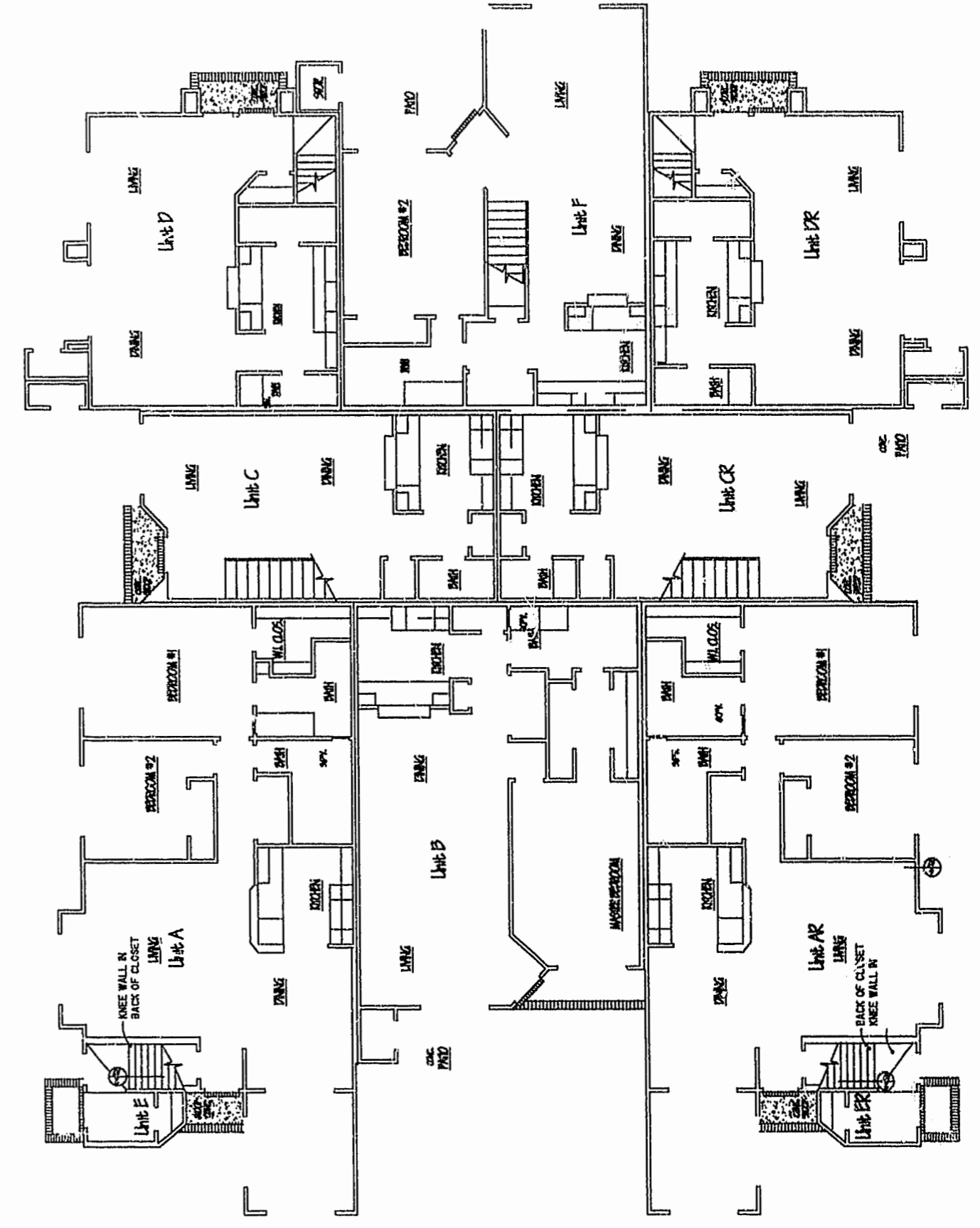


C:\ACAD12\LAFONTAIN\F-11 Tue Sep 10 17:02:04 1996 LAFONTAINE CONDOS-WILLIAMSBURG CROSSING-FINAL PLOT



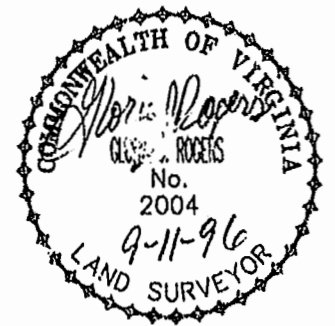
SECOND FLOOR PLAN



FIRST FLOOR PLAN

UNIT	AREA
A	1091
B	1091
C	824
D	1164
E	1100
F	1158
F	1255

10 11.05 S.F.



PLAT RECORDED IN
PB 611-63-68

Recorded 10 23 Apr
234th day of December, 1996
D.B. No. 821 pages 212
Debra E. Hines Clerk

Hassell & Folkes, P.C. Engineers Surveyors Planners Chesapeake, VA 23320 (804) 547-9531	SIZE C	CONTRACT NO. 65/13	DISK/BOX 65/13	FILENAME LFWRSS.ZIP	REV.
SCALE: 1" = 10'		DATE 08/16/96	SHEET 4 of 6		

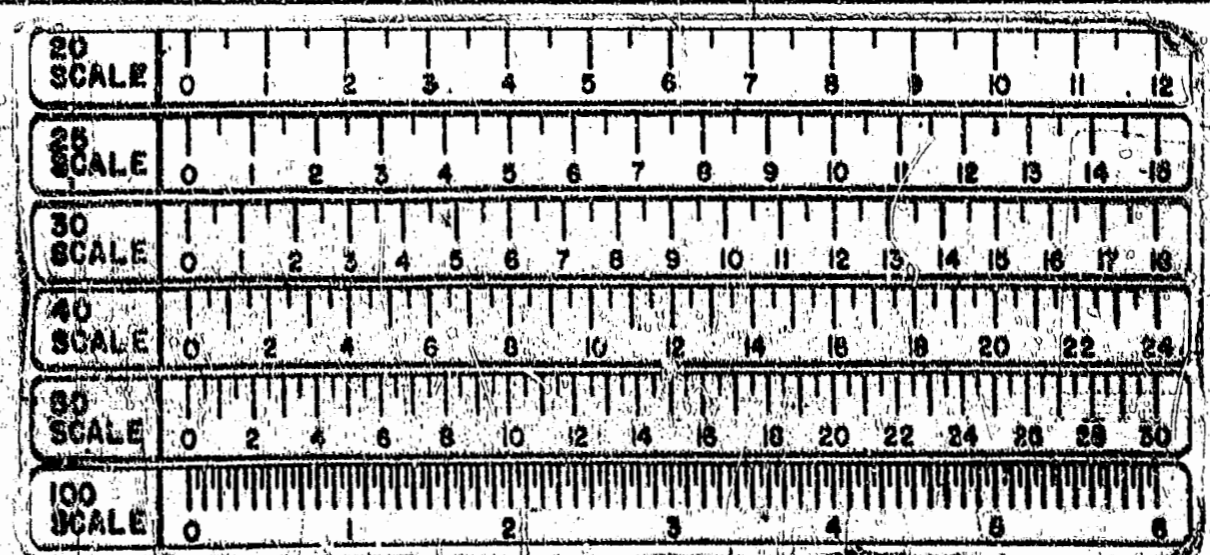


EXHIBIT E-1
LAFONTAINE CONDOMINIUMS
AT
WILLIAMSBURG CROSSING
BUILDING PLAN
FOR
THE FRANCISCUS COMPANY

JAMES CITY COUNTY VIRGINIA