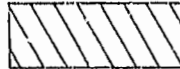

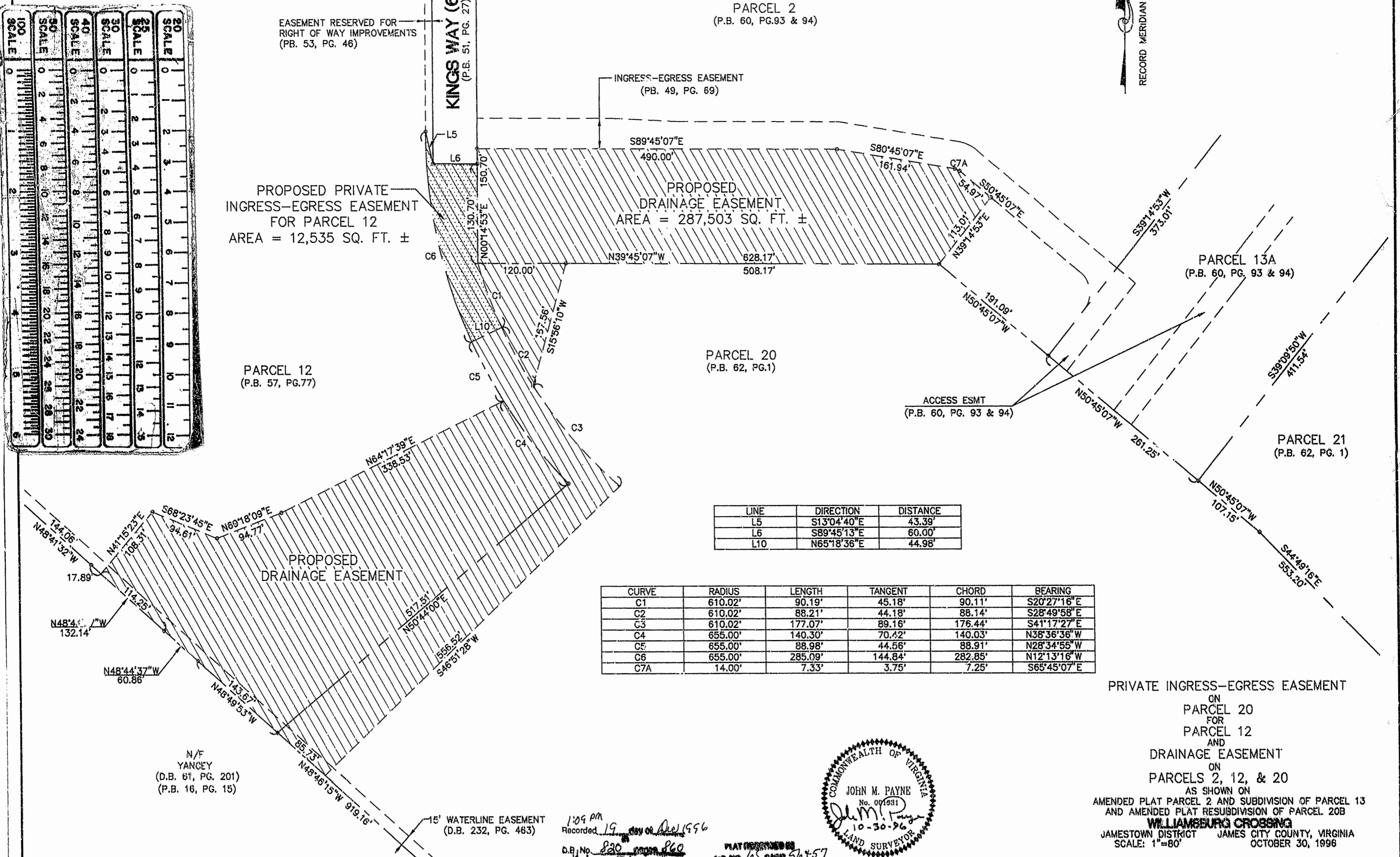
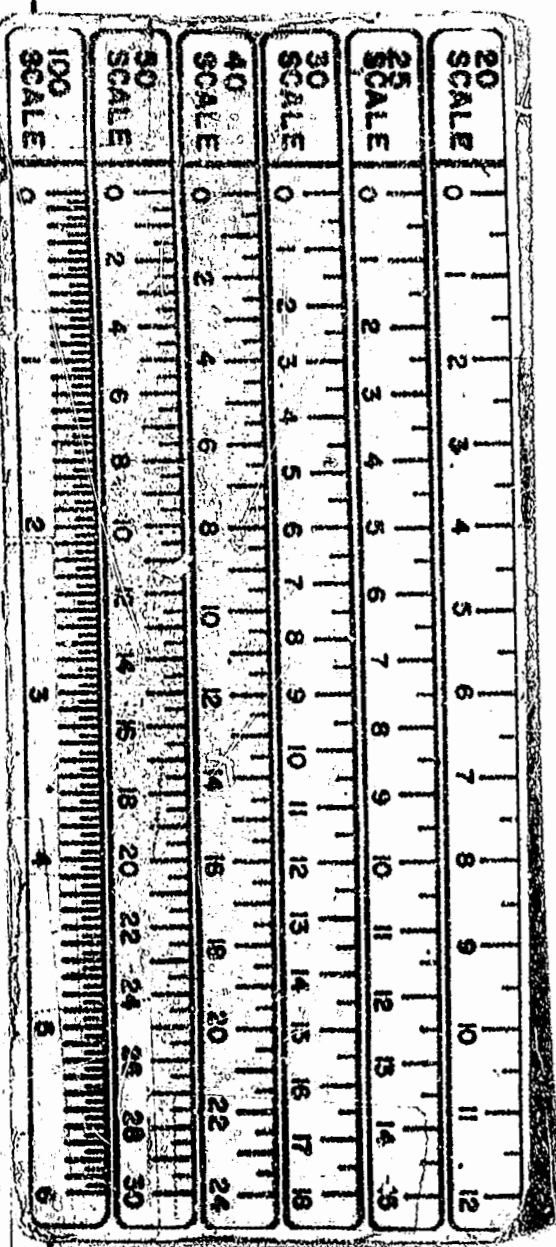


LEGEND

-  PROPOSED DRAINAGE EASEMENT
-  PROPOSED INGRESS-EGRESS EASEMENT



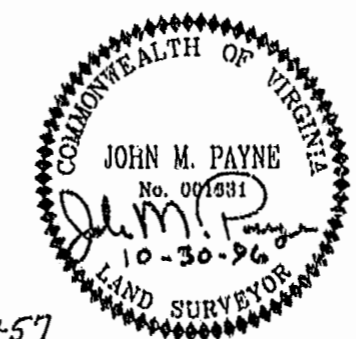
| LINE | DIRECTION   | DISTANCE |
|------|-------------|----------|
| L5   | S13°04'40"E | 43.39'   |
| L6   | S89°45'13"E | 60.00'   |
| L10  | N65°18'36"E | 44.98'   |

| CURVE | RADIUS  | LENGTH  | TANGENT | CHORD   | BEARING     |
|-------|---------|---------|---------|---------|-------------|
| C1    | 610.02' | 90.19'  | 45.18'  | 90.11'  | S20°27'16"E |
| C2    | 610.02' | 88.21'  | 44.18'  | 88.14'  | S28°49'58"E |
| C3    | 610.02' | 177.07' | 89.16'  | 176.44' | S41°17'27"E |
| C4    | 655.00' | 140.30' | 70.42'  | 140.03' | N38°36'36"W |
| C5    | 655.00' | 88.98'  | 44.56'  | 88.91'  | N28°34'55"W |
| C6    | 655.00' | 285.09' | 144.84' | 282.85' | N12°13'16"W |
| C7A   | 14.00'  | 7.33'   | 3.75'   | 7.25'   | S65°45'07"E |

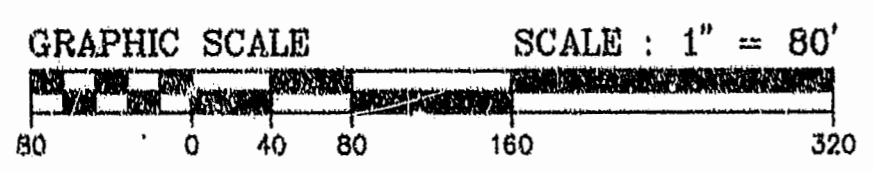
N/F YANCEY  
(D.B. 61, PG. 201)  
(P.B. 16, PG. 15)

15' WATERLINE EASEMENT  
(D.B. 232, PG. 463)

1:09 PM  
Recorded 19 Nov 1996  
D.B. No. 820  
PLAT RECORDED IN P.B. NO. 66, PAGE 54 & 57



PRIVATE INGRESS-EGRESS EASEMENT  
ON  
PARCEL 20  
FOR  
PARCEL 12  
AND  
DRAINAGE EASEMENT  
ON  
PARCELS 2, 12, & 20  
AS SHOWN ON  
AMENDED PLAT PARCEL 2 AND SUBDIVISION OF PARCEL 13  
AND AMENDED PLAT RESUBDIVISION OF PARCEL 20B  
**WILLIAMSBURG CROSSING**  
JAMESTOWN DISTRICT JAMES CITY COUNTY, VIRGINIA  
SCALE: 1"=80' OCTOBER 30, 1996



DRAWN BY: SAG PROJECT NO.: 88079-MF4  
CHKD. BY: JMP DWG. NO.: 24712B

LANGLEY and McDONALD, P.C.  
5544 GREENWICH ROAD, SUITE 200  
VIRGINIA BEACH, VIRGINIA 23462  
PHONE: (757) 473-2000

