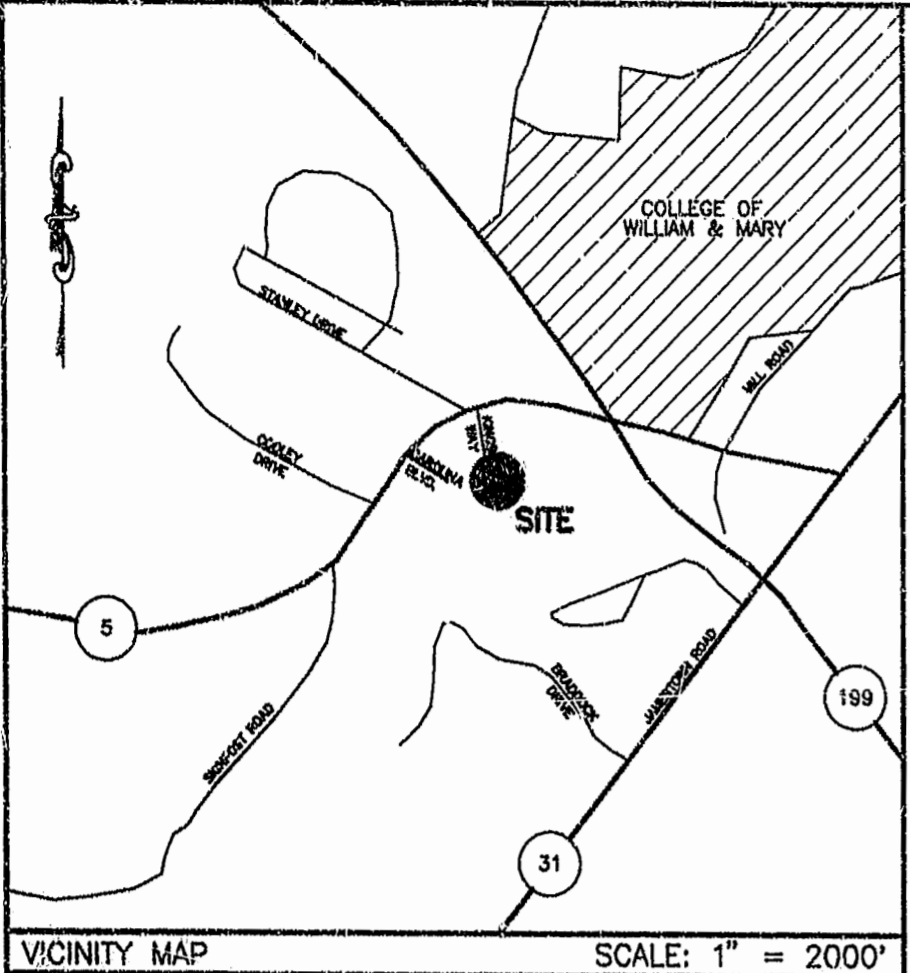
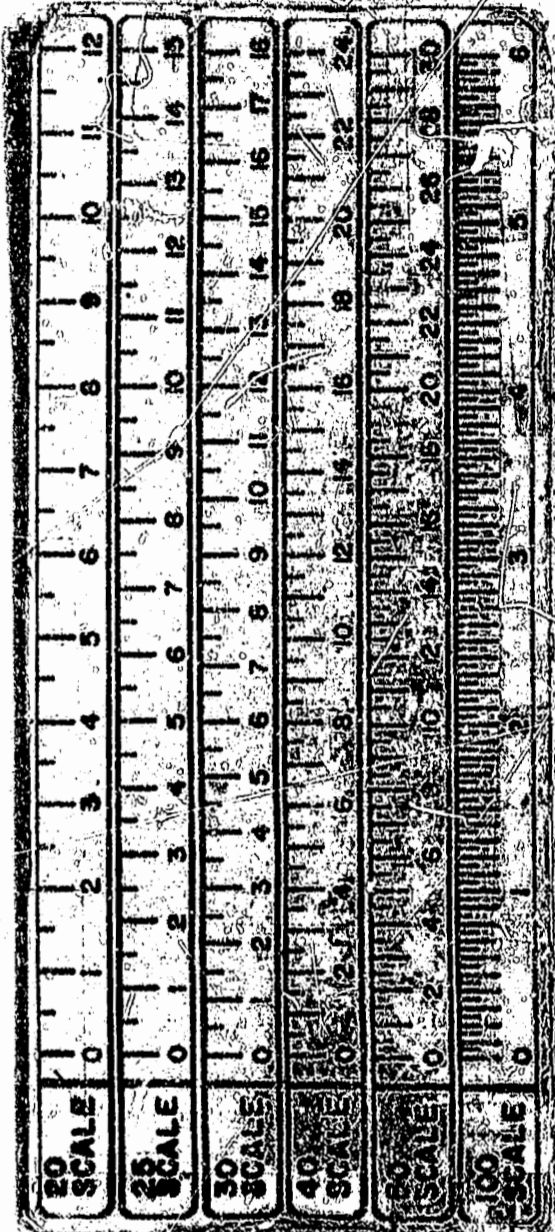
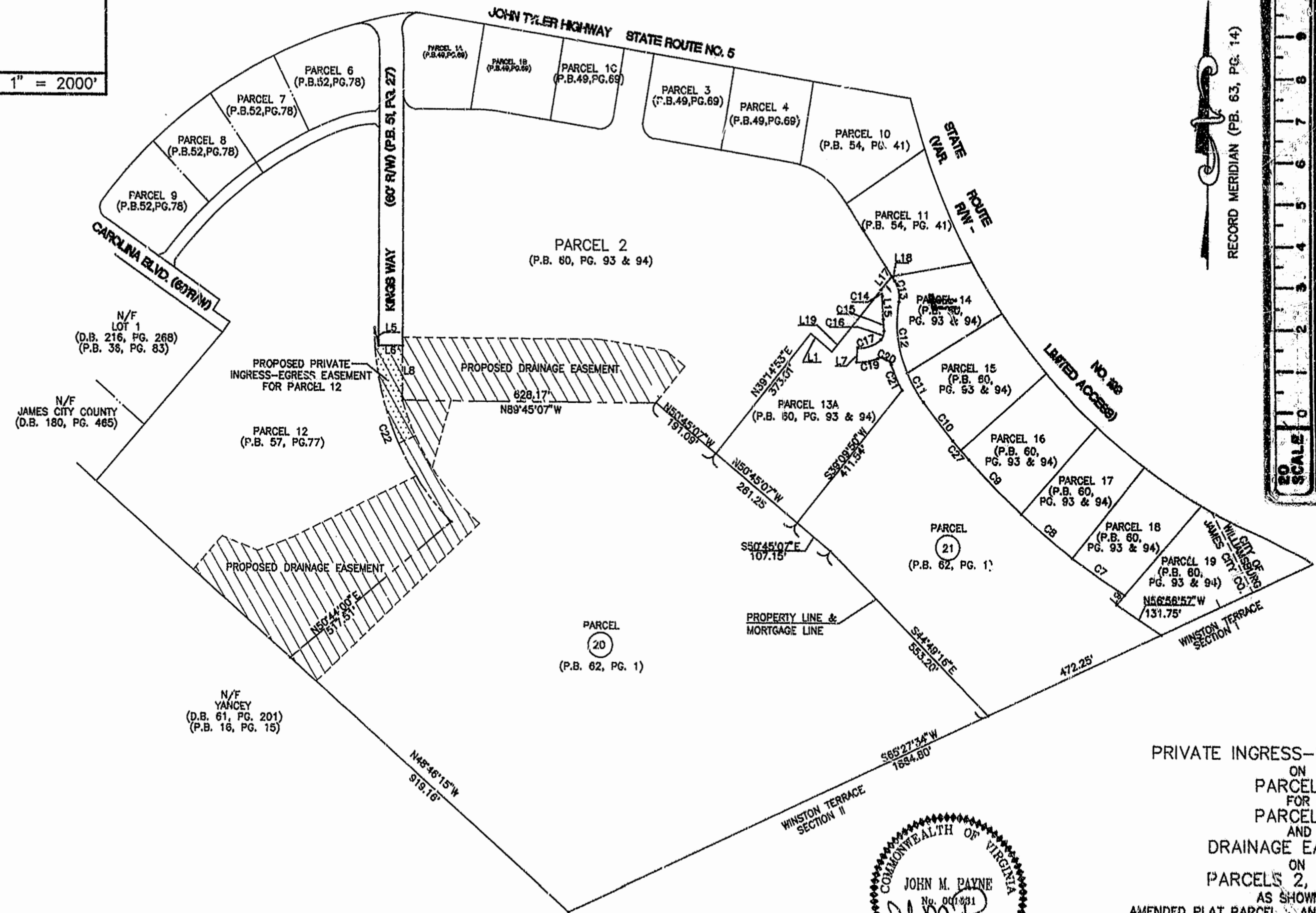


LINE	DIRECTION	DISTANCE	CURVE	LENGTH	DELTA	RADIUS	TANGENT	DIRECTION	CHORD
L1	S50°44'53"E	68.41'	C7	186.48'	04°59'44"	1784.39'	78.27'	N58°43'12"W	166.40'
L5	N13°04'40"W	43.39'	C8	165.42'	05°16'55"	1784.39'	82.77'	N80°34'57"W	152.38'
L6	N89°45'13"W	80.00'	C9	213.89'	08°49'43"	1794.39'	107.08'	N44°31'34"W	213.73'
L7	S04°40'18"W	34.00'	C10	147.04'	04°41'42"	1794.39'	73.56'	N38°48'51"W	147.00'
L8	S00°14'53"W	130.70'	C11	358.71'	12°57'35"	300.00'	40.75'	N20°58'15"W	80.97'
L9	N41°25'09"E	30.42'	C12	175.67'	33°10'09"	300.00'	89.34'	N81°52'22"W	171.25'
L14	S60°45'07"E	30.00'	C13	52.38'	42°52'22"	70.00'	27.44'	N11°43'29"W	51.17'
L15	S02°14'18"W	55.35'	C14	15.11'	33°55'24"	26.00'	7.74'	S04°18'13"E	27.35'
L17	S39°14'53"W	44.08'	C15	27.35'	04°01'54"	388.74'	13.68'	S04°18'13"E	27.35'
L19	N39°14'53"E	156.03'	C16	23.43'	53°41'32"	28.00'	12.85'	S04°18'13"E	22.58'
C17				82.67'	47°14'54"	76.00'	37.24'	S71°24'48"W	80.81'
C18				45.87'	34°33'37"	76.00'	33.02'	S68°02'28"E	45.17'
C19				53.80'	28°01'20"	110.00'	27.45'	N86°59'38"E	53.26'
C20				41.37'	94°48'34"	25.00'	27.19'	S89°58'47"E	36.81'
C21				86.55'	09°48'33"	388.74'	33.38'	S23°26'48"E	66.47'
C22				514.37'	44°59'39"	685.00'	271.27'	N22°14'56"W	601.25'
C27				90.00'	01°54'57"	1794.39'	30.00'	N41°08'42"W	60.00'



VICINITY MAP SCALE: 1" = 2000'

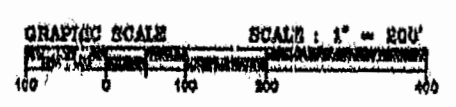


PRIVATE INGRESS-EGRESS EASEMENT
ON
PARCEL 20
FOR
PARCEL 12
AND
DRAINAGE EASEMENT
ON
PARCELS 2, 12, & 20
AS SHOWN ON
AMENDED PLAT PARCEL 2 AND SUBDIVISION OF PARCEL 13
AND AMENDED PLAT RESUBDIVISION OF PARCEL 20B
WILLIAMSBURG CROSSING
JAMESTOWN DISTRICT JAMES CITY COUNTY, VIRGINIA
SCALE: 1"=200' OCTOBER 30, 1996



1:09 PM
Recorded 1996
D.B. No. 820
Miles Swindell

PLAT RECORDED IN
PAGE 56 457



DRAWN BY :	SAG	PROJECT NO. :	88079-MF4
CHKD. BY :	JMP	DWG. NO. :	24712A

LANGLEY and McDONALD, P.C.
5544 GREENWICH ROAD, SUITE 200
VIRGINIA BEACH, VIRGINIA 23462
PHONE: (757) 473-2000