

NUMBER	BEARING	DIST
L11	N28°38'59\"E	314.41'
L12	N42°50'36\"W	92.67'
L13	N87°13'03\"W	50.86'
L14	S87°49'09\"W	41.40'
L15	S71°48'43\"W	59.31'
L16	N83°12'25\"W	58.34'
L17	N64°48'26\"W	47.50'
L18	N55°59'29\"W	61.00'
L19	N62°42'35\"W	44.10'
L20	N15°47'12\"W	60.41'
L21	N63°26'39\"W	42.40'
L22	WEST	37.93'
L23	S60°15'54\"W	61.15'
L24	N77°02'51\"W	148.59'
L25	N82°59'11\"W	82.79'
L26	N41°59'55\"W	68.02'
L27	N26°34'27\"W	56.52'
L28	N59°52'07\"W	90.63'
L29	N45°32'38\"W	247.28'

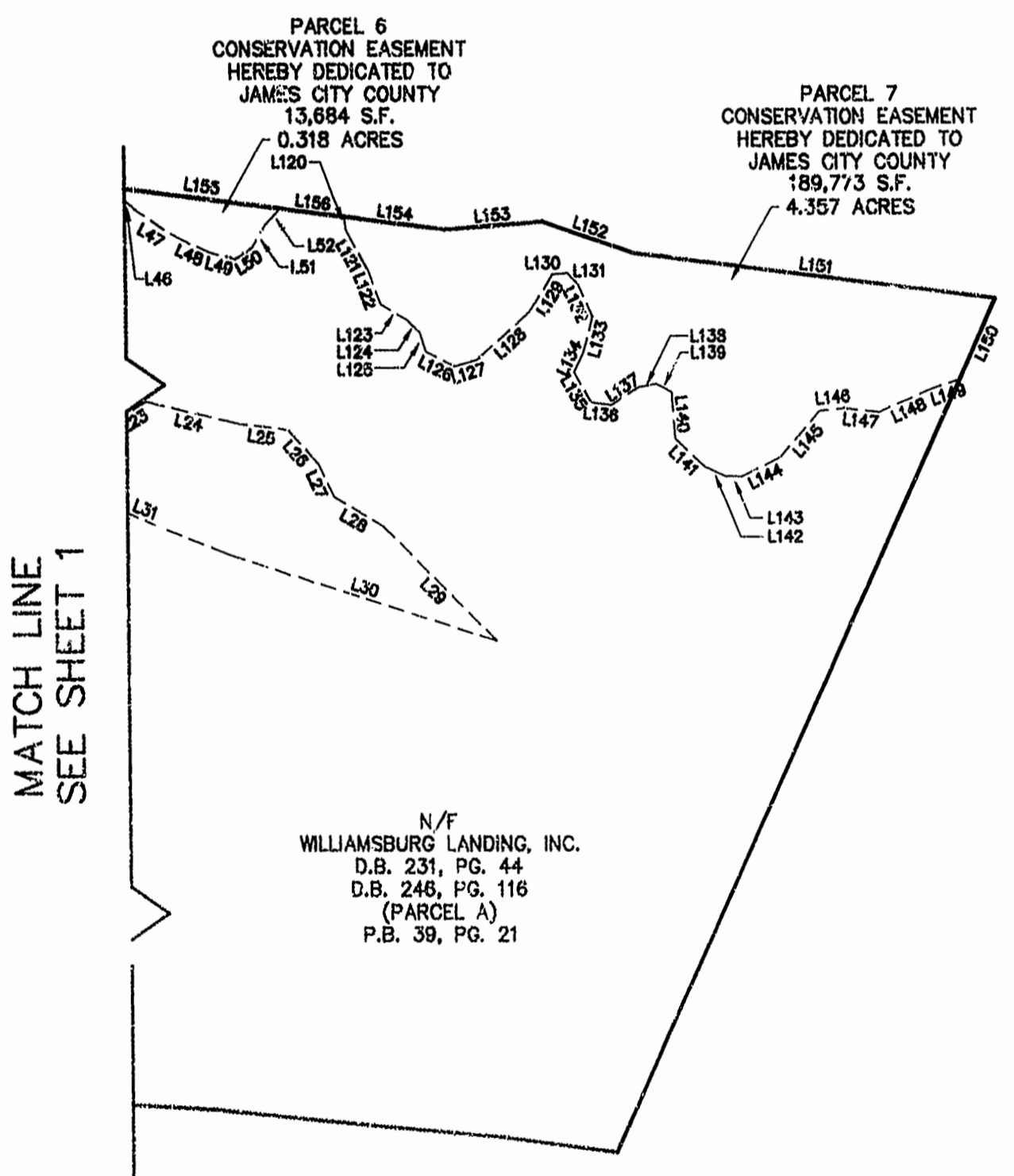
NUMBER	BEARING	DIST
L30	S72°44'08\"E	442.97'
L31	S68°37'02\"E	294.62'
L32	S68°17'25\"E	180.57'
L33	S85°25'07\"E	184.05'
L34	S53°29'28\"E	190.47'
L35	S45°53'16\"E	28.79'
L40	N73°03'08\"W	58.01'
L41	S83°33'30\"W	47.14'
L42	N81°53'01\"E	24.27'
L43	N58°41'03\"E	4.62'
L44	N82°59'27\"W	150.07'
L45	N30°22'21\"W	16.57'
L46	N49°28'31\"W	32.18'
L47	S57°53'12\"E	77.48'
L48	N66°15'26\"W	52.05'
L49	S 8'07'41\"W	42.26'
L50	S57°41'38\"W	32.50'
L51	S31°17'03\"W	40.11'
L52	S44°42'20\"W	34.65'
L53	N55°48'48\"E	73.19'
L54	N70°48'27\"E	120.57'
L55	N64°20'52\"E	69.63'
L56	S73°10'55\"E	22.36'
L57	S82°23'37\"W	163.53'
L58	S01°03'48\"W	91.85'
L59	N70°15'24\"W	60.58'
L60	N78°55'28\"W	28.87'
L61	S52°32'12\"W	14.89'
L62	S53°23'03\"E	58.48'

NUMBER	BEARING	DIST
L63	S18°04'42\"E	17.57'
L64	N52°23'37\"E	56.46'
L65	S80°18'48\"W	104.40'
L66	N82°59'32\"W	350.00'
L67	N63°41'52\"W	105.95'
L68	N82°59'27\"W	84.76'
L69	N50°15'23\"E	81.44'
L70	N85°14'18\"E	93.74'
L71	N33°42'08\"E	37.41'
L72	N24°47'34\"W	31.27'
L74	N03°29'02\"E	67.26'
L75	N65°56'14\"E	85.39'
L76	N55°09'10\"E	41.68'
L77	N12°31'44\"E	48.74'
L78	N03°48'35\"E	317.80'
L79	N02°28'21\"W	53.09'
L80	S64°44'44\"E	65.62'
L81	S22°12'48\"E	92.56'
L82	S09°19'28\"E	115.07'
L83	S18°36'36\"E	68.38'
L85	N63°15'32\"E	38.98'
L88	N03°44'18\"W	124.46'
L87	N29°49'39\"E	41.87'
L88	S44°53'23\"E	56.12'
L89	S77°27'36\"E	46.57'
L90	N48°30'24\"E	120.55'
L91	N28°31'48\"E	123.24'

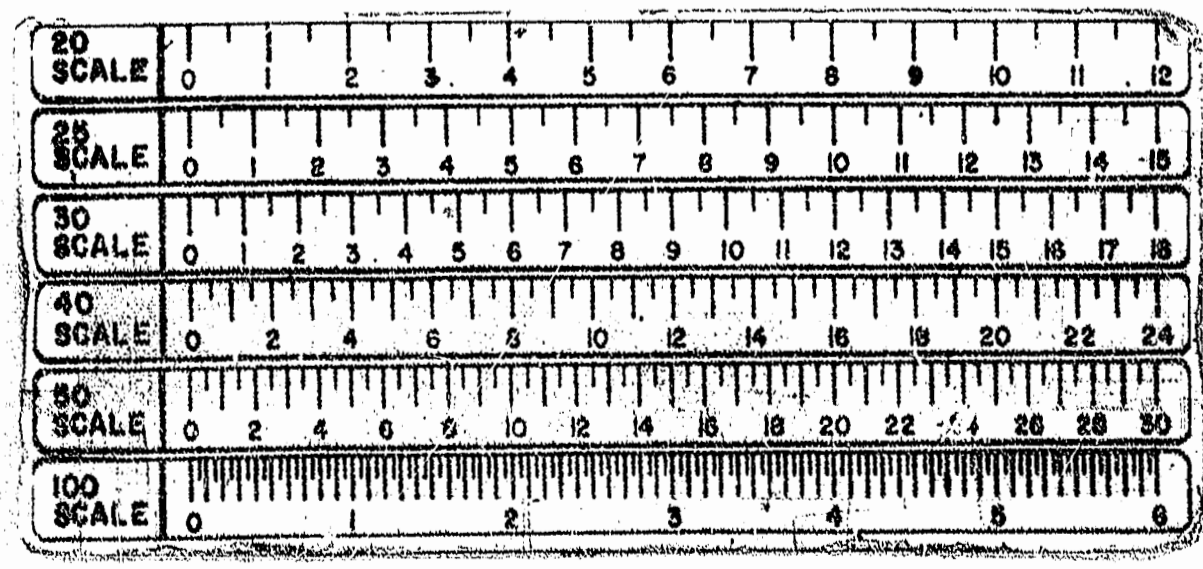
NUMBER	BEARING	DIST
L92	N01°14'55\"E	35.55'
L93	N14°40'53\"W	84.22'
L94	N30°57'17\"E	34.76'
L95	N10°10'44\"W	80.99'
L96	N11°28'28\"W	30.29'
L97	N73°44'54\"W	75.58'
L98	S48°08'42\"W	39.29'
L99	S00°52'48\"E	98.89'
L100	S89°55'40\"W	72.03'
L101	S47°24'45\"W	38.94'
L102	S74°03'27\"W	84.78'
L103	S28°38'46\"W	34.86'
L104	S04°02'49\"E	67.08'
L105	S82°23'37\"W	94.50'
L106	S72°41'41\"W	100.90'
L107	S50°54'22\"W	29.96'
L108	S35°21'10\"W	143.95'
L109	S40°08'35\"W	70.16'
L110	S27°05'44\"W	67.08'
L111	S06°27'44\"W	110.22'
L112	S11°15'07\"E	31.35'
L113	S49°44'48\"E	199.65'
L114	S67°32'39\"E	74.64'
L115	S84°03'56\"E	211.06'
L116	S11°38'28\"E	22.43'
L117	N84°03'56\"W	233.95'
L118	N67°32'39\"W	69.73'
L119	N48°44'48\"W	223.90'
L120	S06°56'46\"E	20.52'

NUMBER	BEARING	DIST
L121	N29°32'54\"W	89.88'
L122	N20°32'08\"W	54.98'
L123	S60°57'44\"E	48.01'
L124	N44°36'19\"W	27.18'
L125	N18°22'24\"W	30.39'
L126	N83°25'38\"W	46.65'
L127	S74°24'30\"W	37.17'
L128	S49°05'33\"W	111.81'
L129	S33°06'33\"W	85.90'
L130	S83°38'38\"W	13.07'
L131	N43°41'08\"W	22.84'
L132	N24°09'27\"W	64.79'
L133	N15°05'43\"E	58.71'
L134	N26°58'09\"E	33.14'
L135	N30°43'17\"W	53.81'
L136	N84°53'08\"W	31.68'
L137	S37°36'34\"W	49.32'
L138	S90°15'19\"W	28.20'
L139	N63°00'32\"W	26.02'
L140	N03°55'18\"W	69.20'
L141	N46°22'07\"W	63.61'
L142	N68°57'05\"W	35.46'
L143	S86°25'24\"W	26.36'
L144	S84°31'04\"W	67.55'
L145	S41°34'08\"W	83.34'
L146	S84°48'11\"W	38.39'
L147	N84°03'50\"W	54.69'
L148	S87°05'20\"W	66.23'
L149	S72°05'57\"W	47.22'
L150	S26°07'24\"W	135.10'
L151	S82°59'27\"E	569.89'
L152	S71°42'08\"E	152.06'
L153	N85°41'43\"E	152.97'
L154	S82°59'27\"E	159.48'
L155	N82°59'27\"W	261.56'
L156	S82°59'27\"E	101.89'
L157	S82°59'27\"E	96.68'

CURVE TABLE						
NUMBER	DELTA	RADIUS	LENGTH	TANGENT	CHORD	CHORD BEARING
C1	08°49'16\"	1979.96	339.37	170.10	338.96	N69°19'38\"W
C2	70°45'04\"	784.16	931.27	535.47	673.22	N83°09'50\"E
C3	11°44'44\"	784.13	164.60	77.57	154.33	S55°55'18\"E

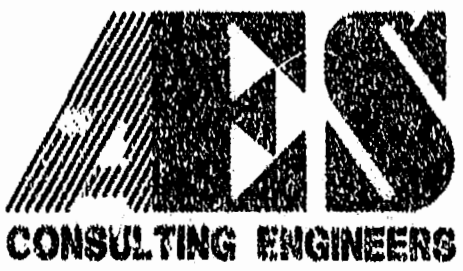


10.03.96-16.07 81622P02



PLAT RECORDED IN  
P.B. NO. 65 PAGE 526, 27

Recorded 7th day of October 1996  
D.B. No. 810  
*James Wilson, Jr.*



5248 Old Towne Road, Suite 1  
Williamsburg, Virginia 23188  
(804) 253-0040  
Fax (804) 220-8994

PLAT SHOWING  
**CONSERVATION EASEMENT**  
FOR DEDICATION  
**TO JAMES CITY COUNTY**  
OWNED BY: WILLIAMSBURG LANDING, INC.  
JAMES CITY COUNTY VIRGINIA



No.	DATE	REVISION / COMMENT / NOTE	BY

Designed	Drawn
N/A	SCL
Scale	Date
1"=200'	9/17/96
Project No.	
8162	
Drawing No.	
2 OF 2	