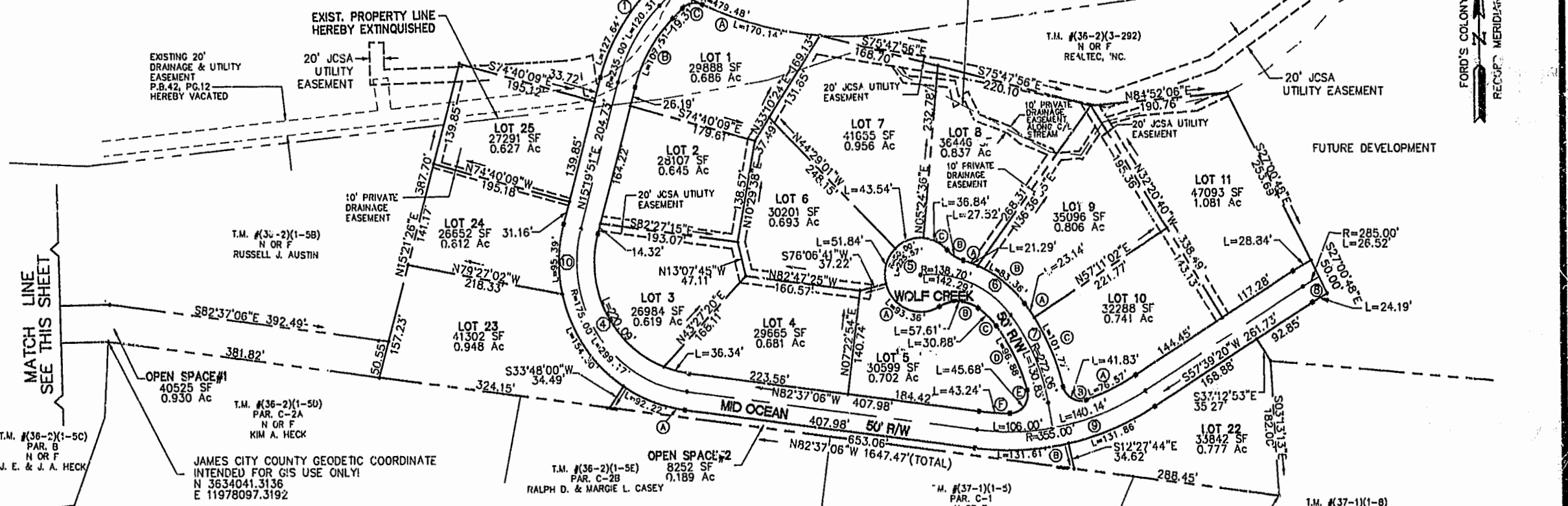


LOT TABULATIONS	S.F.	AC.
TOTAL AREA OF RESIDENTIAL LOTS	497,107	11.412
TOTAL AREA OF R/W	100,229	2.301
TOTAL AREA OF OPEN SPACE	46,777	1.120
TOTAL AREA SUBDIVIDED	646,113	14.833
TOTAL NO. OF LOTS	15	0.761
AVERAGE LOT SIZE	33,140	

T.M. #36-2)(3-291)
 FORD'S COLONY
 PROJECT MAINTENANCE
 CENTER
 N OR F
 REALTEC, INC.
 P.B. 42, PG. 12

FORD'S COLONY & WILLIAMSBURG
 COMMUNITY CENTER

EXIST. ST. ANDREWS DRIVE
 100' R/W



MATCH LINE
SEE THIS SHEET

MATCH LINE
SEE THIS SHEET

LOT CURVE DATA

NUMBER	DELTA	RADIUS	LENGTH	TANGENT	CHORD	CHRD BRNG
NO.1A	20°19'52"	479.48	170.14	85.97	189.25	S75°34'34"E
NO.1B	29°20'01"	210.00	107.51	54.96	106.34	N29°59'52"E
NO.1C	89°55'30"	25.00	30.51	17.48	28.65	N79°37'37"E
NO.3	84°04'03"	150.00	220.09	135.22	200.87	N26°42'10"W
NO.4	13°52'55"	150.00	36.34	18.26	36.25	N75°40'39"W
NO.5A	106°58'53"	50.00	93.36	67.55	80.38	S67°22'39"E
NO.5B	66°00'36"	50.00	57.61	32.48	54.47	S87°51'47"E
NO.5C	17°34'43"	113.70	34.88	17.88	34.75	S48°04'06"E
NO.5D	22°28'02"	247.06	98.88	49.07	98.26	S28°02'44"E
NO.5E	104°41'11"	25.00	45.68	32.40	39.58	S37°31'53"W
NO.5F	07°30'25"	330.00	43.24	21.65	43.21	N88°22'19"W
NO.5G	99°24'16"	50.00	51.84	28.52	49.55	S18°18'56"W
NO.7	49°53'30"	50.00	43.54	23.26	42.18	S70°27'49"W
NO.8A	07°27'08"	163.70	21.29	10.86	21.28	N70°11'00"W
NO.8B	31°31'48"	50.00	27.52	14.12	27.17	N58°08'39"W
NO.8C	42°12'40"	50.00	36.84	19.30	36.01	N63°29'08"W
NO.8A	04°27'47"	297.06	23.14	11.58	23.13	N35°02'52"W
NO.8B	28°10'41"	163.70	83.36	42.61	82.48	N51°52'05"W
NO.10A	131°17'38"	330.00	76.57	38.46	76.40	S64°18'09"W
NO.10B	95°51'49"	25.00	41.83	27.70	37.12	N61°07'08"W
NO.10C	10°37'44"	297.06	101.77	51.39	101.27	N23°00'08"W
NO.11	05°19'52"	310.00	28.84	14.43	28.83	S60°19'16"W
NO.22	19°52'56"	380.00	131.88	66.60	131.20	N67°35'48"E
NO.23	44°12'13"	200.00	154.30	81.22	150.50	S34°09'53"E
NO.24	27°19'38"	200.00	95.39	48.62	94.49	S01°40'02"W
OPN SP2A	26°25'07"	200.00	92.22	46.94	91.40	S69°24'33"E
OPN SP2B	19°50'38"	380.00	131.61	66.47	130.95	N87°17'35"E

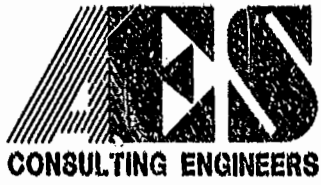
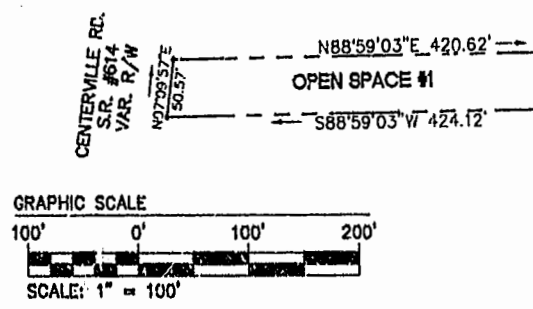
RIGHT-OF-WAY CURVE DATA

NUMBER	DELTA	RADIUS	LENGTH	TANGENT	CHORD	CHRD BRNG
1	28°07'40"	280.00	127.64	65.13	126.36	N29°23'41"E
2	97°08'28"	25.00	42.39	28.33	37.49	N05°06'41"W
3	11°43'44"	479.48	98.15	49.25	97.98	S59°32'46"E
4	97°56'58"	150.00	256.43	172.40	226.33	S13°38'37"E
5	258°29'19"	50.00	225.57	77.45	108°22'34"E	
6	38°37'49"	163.70	104.65	54.19	102.88	S55°35'39"E
7	24°05'31"	297.06	124.91	63.39	123.99	S25°14'00"E
8	05°19'52"	310.00	28.84	14.43	28.83	N61°19'15"E
9	39°43'34"	380.00	263.47	137.28	258.23	S77°31'07"W
10	97°56'58"	200.00	341.91	229.87	301.77	N33°38'37"W

JAMES CITY COUNTY GEODETIC COORDINATE
 INTENDED FOR GIS USE ONLY!
 N 3634041.3136
 E 11978097.3192

PLAT RECORDED IN
 P.B. NO. 65, PAGES 19, 20

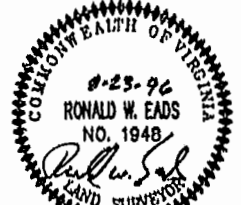
Recorded 1st day of October, 1996
 S.B. No. 809, Comp. 99, 12, 13
 H. W. Eads, Jr., Clerk



5248 Olde Towne Road, Suite 1
 Williamsburg, Virginia 23188
 (804) 253-0040
 Fax (804) 220-8994

**PLAT OF SUBDIVISION AND
 PROPERTY LINE EXTINGUISHMENT
 FORD'S COLONY
 @ WILLIAMSBURG
 SECTION III-B
 LOTS 1-11, 22-25**

POWhatan DISTRICT JAMES CITY COUNTY VIRGINIA



No.	DATE	REVISION / COMMENT / NOTE	BY

Designed	Drawn
AES	MLP
Scale	Date
1"=100'	8/23/98
Project No.	
5652-3B	
Drawing No.	
2 of 2	