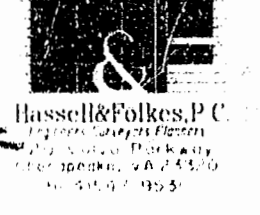


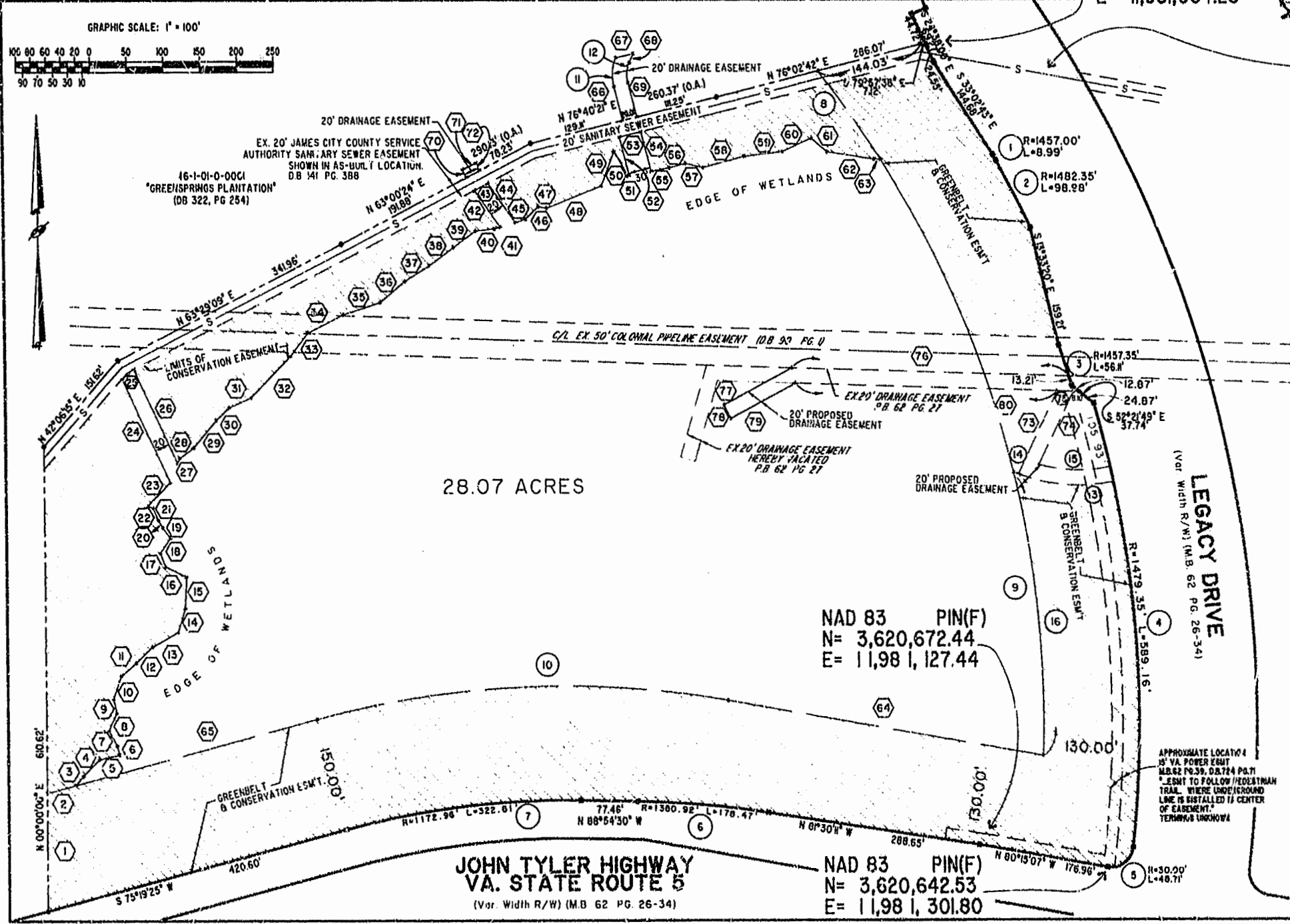
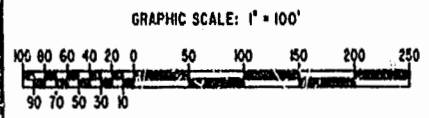
Nº	BEARING	DISTANCE	Nº	BEARING	DISTANCE	Nº	BEARING	DISTANCE	Nº	BEARING	DISTANCE
1	NORTH	155.06'	21	N24°19'39"W	18.00'	41	N73°24'07"E	8.57'	61	S50°49'30"E	28.39'
2	N78°19'25"E	40.47'	22	N69°19'39"W	7.07'	42	N35°32'25"W	59.33'	62	S8°14'26"E	64.31'
3	N40°42'38"E	15.76'	23	N44°31'02"E	43.59'	43	N62°57'01"E	20.22'	63	N89°22'10"E	8.13'
4	N46°05'27"E	32.02'	24	N25°21'31"W	160.65'	44	S35°32'25"W	63.21'	64	N80°15'07"W	433.67'
5	N78°05'22"E	27.59'	25	N53°05'23"E	20.41'	45	N73°24'07"E	14.72'	65	S75°19'25"W	340.81'
6	N16°44'45"W	12.04'	26	S25°21'31"E	136.97'	46	N46°21'12"E	34.05'	66	N14°37'46"W	45.70'
7	N27°24'57"W	23.32'	27	N19°51'26"E	6.90'	47	S77°39'56"E	11.29'	67	N77°48'41"E	24.83'
8	N24°46'40"E	25.18'	28	N83°59'32"E	24.16'	48	N88°43'48"E	80.58'	68	S24°19'09"W	12.45'
9	N13°22'46"W	18.38'	29	N40°41'58"E	47.06'	49	N21°06'45"E	48.92'	69	S14°37'46"E	46.16'
10	N19°16'53"E	32.76'	30	N46°49'41"E	23.74'	50	S30°15'14"E	37.69'	70	N24°48'52"W	11.70'
11	N11°25'01"E	1.57'	31	N66°20'36"E	33.45'	51	N79°32'01"E	1.93'	71	N65°11'08"E	20.00'
12	N46°33'07"E	31.08'	32	N44°53'19"E	76.32'	52	N14°37'46"W	52.29'	72	S24°48'52"E	10.94'
13	N61°21'53"E	40.31'	33	N38°39'22"E	40.18'	53	N78°40'21"E	30.01'	73	S26°16'05"W	121.70'
14	N17°35'03"E	32.98'	34	N63°44'13"E	53.14'	54	S14°37'46"E	53.80'	74	S26°16'05"W	107.44'
15	N02°42'14"E	41.60'	35	N72°23'40"E	52.44'	55	N79°32'01"E	25.17'	75	S88°13'21"E	21.98'
16	N65°30'48"W	31.89'	36	N50°42'36"E	43.97'	56	N74°56'16"E	22.42'	76	N88°13'21"W	376.15'
17	N2°18'53"W	19.03'	37	N58°37'17"E	38.60'	57	S76°45'41"E	24.45'	77	N62°25'40"E	104.81'
18	N35°55'35"E	24.19'	38	N54°09'52"E	41.40'	58	N75°14'55"E	58.28'	78	N27°34'20"W	20.00'
19	N37°34'05"W	17.46'	39	N54°09'42"E	37.13'	59	N83°10'12"E	52.44'	79	S62°25'40"W	99.57'
20	N29°31'10"W	11.05'	40	N84°42'43"E	28.55'	60	N66°02'13"E	42.50'	80	N88°13'21"W	355.64'

SUBDIVISION
 OF
 TAX PARCEL 46-1-01-0-0001
 STANDING IN THE NAME OF
GREENSPRINGS PLANTATION, INC.
 REFERENCE D.B. 322 PG.254
 BERKELEY DISTRICT JAMES CITY COUNTY VIRGINIA
 KNOWN AS
FAIRWAYS VILLAS
 A CONDOMINIUM COMMUNITY

DSK/BOX	FILENAME	COMPUTED BY	DRAWN BY	DATE
18/13	FWAYPLAT.DWG	HF 11/28/95	HF 05/22/96	05/23/96
SCALE	CHECKED BY	CONTRACT Nº	SHEET NO.	
1" = 100'	HA 05/29/96	95-079	2 OF 2	



NAD 83
 N = 3,621,722.05
 E = 11,981,064.28



NOTE: THAT PORTION OF THE EXISTING 20' JAMES CITY COUNTY SERVICE AUTHORITY SANITARY SEWER EASEMENT (REFERENCE D.B. 141 PG. 380) WHICH LIES WITHIN THE RIGHT OF WAY OF LEGACY DRIVE AS SHOWN IN M.B. 62 PGS. 26-34 WAS VACATED THEREIN.

PLAT RECORDED IN
 P.B. NO. 115 PAGE 213

Revised by Scotty 1/96
 S.D. No. 207 dated 2/8/96
 Hassell & Folkes

NOTE: THE THREE (3) COORDINATES SHOWN HEREON ARE REFERENCED TO THE JAMES CITY COUNTY GEODETIC CONTROL NETWORK -- NAD 83. THE FOLLOWING COUNTY MONUMENTS WERE USED AS A REFERENCE. JAMES CITY COUNTY MONUMENT Nº 315 JAMES CITY COUNTY MONUMENT Nº 314

NOTE: ALL MONUMENTS SHALL BE SET IN ACCORDANCE WITH SECTIONS 17-34 THROUGH 17-36 OF THE JAMES CITY COUNTY SUBDIVISION ORDINANCE.

NOTE: "LEGACY DRIVE -- RELOCATED VA. STATE ROUTE 614 -- VARIABLE WIDTH R.O.W." AS CALLED IN MAP BOOK 62 PAGES 26-34 HAS NOT YET BEEN TAKEN INTO THE SECONDARY SYSTEM OR ASSIGNED A ROUTE NUMBER BY THE VIRGINIA DEPARTMENT OF TRANSPORTATION.

NOTE: UNLESS OTHERWISE NOTED, ALL DRAINAGE EASEMENTS DESIGNATED ON THIS PLAT SHALL BE PRIVATE.

- HATCHED AREA IS CONSERVATION ESMT.
- CONCRETE MONUMENT
- IRON PIN
- LINE NUMBER
- CURVE NUMBER

SITE AREA: 28.07 ACRES
 GREENBELT AREA: 7.83 ACRES
 CONSERVATION EASEMENT AREA: 10.38 ACRES
 COLONIAL PIPELINE EASEMENT AREA: 1.38 ACRES
 ON-SITE DRAINAGE EASEMENT AREA: 0.33 ACRES
 OFF-SITE DRAINAGE EASEMENT AREA: 0.04 ACRES

JOHN TYLER HIGHWAY
VA. STATE ROUTE 5
 (Var. Width R/W) (M.B. 62 PG. 26-34)

NAD 83 PIN(F)
 N = 3,620,672.44
 E = 11,981,127.44

NAD 83 PIN(F)
 N = 3,620,642.53
 E = 11,981,301.80