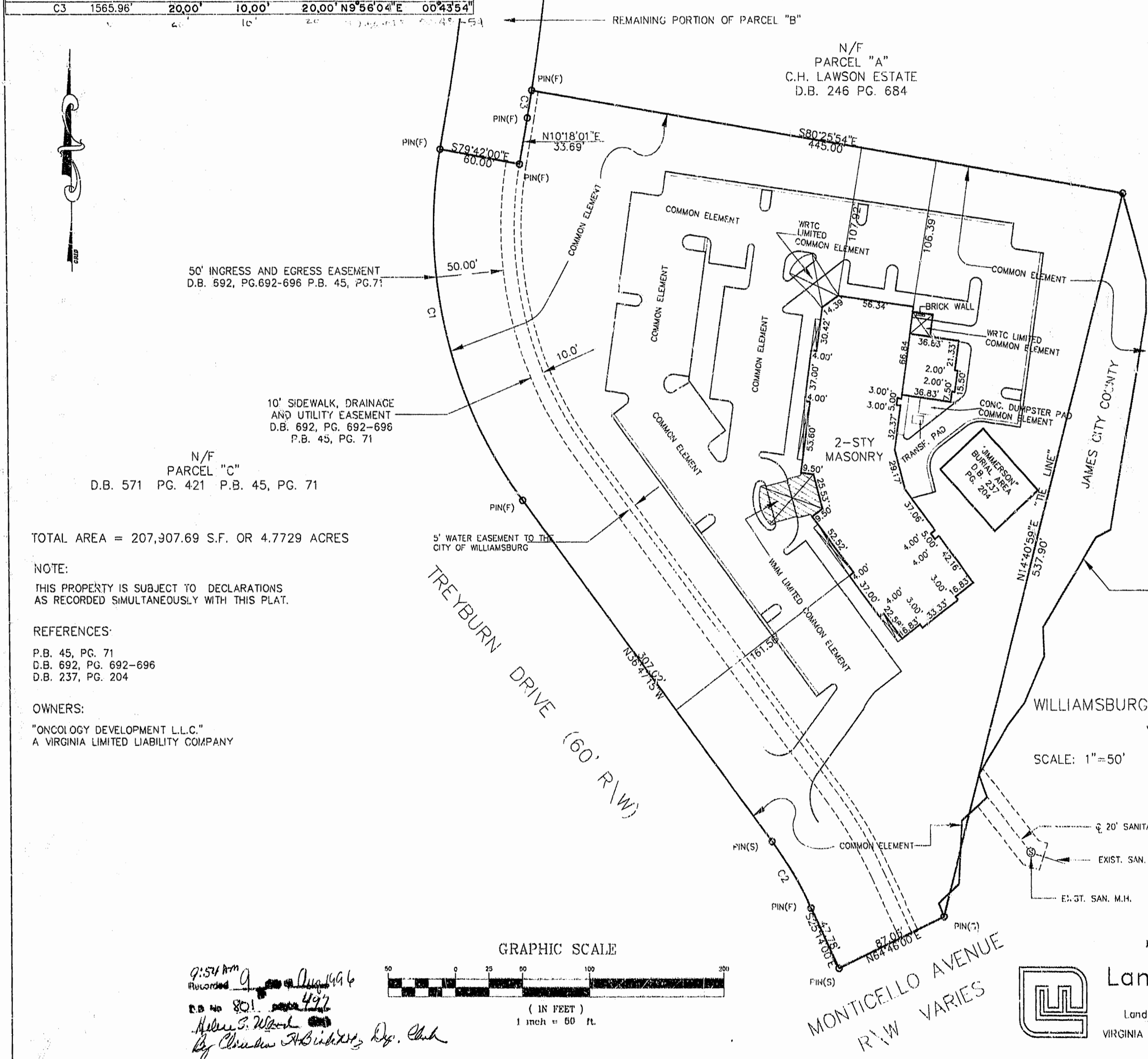
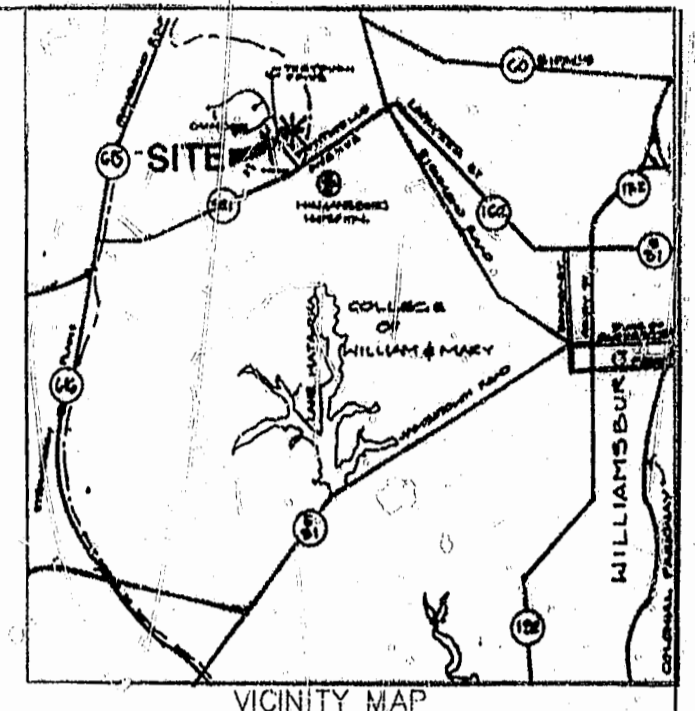


CURVE	RADIUS	LENGTH	TANGENT	CHORD	BEARING	DELTA
C1	325.00'	267.10'	141.51'	259.65'	S13°14'36"E	47°05'18"
C2	275.00'	55.45'	27.82'	55.36'	N31°00'38"W	11°33'13"
C3	1565.96'	20.00'	10.00'	20.00'	N9°56'04"E	00°43'54"



PIPE(F)

CITY OF WILLIAMSBURG

CENTERLINE OF CREEK IS PROPERTY LINE AND POLITICAL BOUNDARY

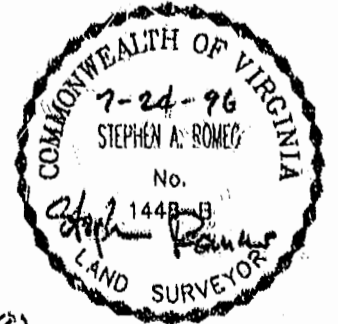
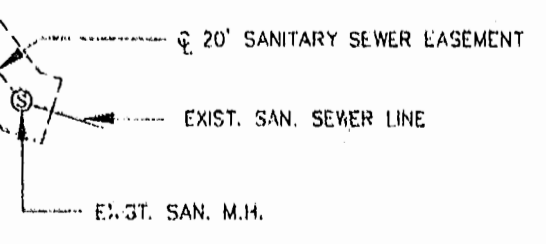
NOTE: LISTING OF THE COMMON ELEMENTS AND THE LIMITED COMMON ELEMENTS ARE FOR ILLUSTRATION PURPOSES ONLY AND ARE MORE PARTICULARLY DESCRIBED IN THE AMENDED AND RESTATED DECLARATION OF COVENANTS AND RESTRICTIONS OF WILLIAMSBURG PHYSICIANS' CENTER CONDOMINIUM RECORDED IN THE CLERK'S OFFICE OF JAMES CITY COUNTY.

PLAT OF WILLIAMSBURG PHYSICIANS' CENTER CONDOMINIUM  
JAMES CITY COUNTY, VIRGINIA

SCALE: 1"=50'

DATE: 7/2/96

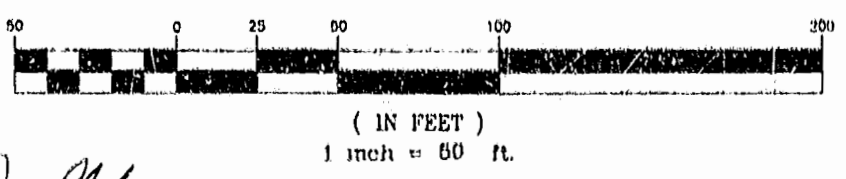
SHEET 1 OF 2



PLAT RECORDED IN  
P.B. NO. 164 PAGE 81482

**Langley and McDonald, P.C.**  
Engineers - Surveyors - Planners  
Landscape Architects - Environmental Consultants  
VIRGINIA BEACH WILLIAMSBURG

GRAPHIC SCALE



9:54 AM  
Recorded  
D.B. No 801  
By Charles A. Bickel, Jr., Reg. Clerk

TOTAL AREA = 207,907.69 S.F. OR 4.7729 ACRES

NOTE:  
THIS PROPERTY IS SUBJECT TO DECLARATIONS AS RECORDED SIMULTANEOUSLY WITH THIS PLAT.

REFERENCES:  
P.B. 45, PG. 71  
D.B. 692, PG. 692-696  
D.B. 237, PG. 204

OWNERS:  
"ONCOLOGY DEVELOPMENT L.L.C."  
A VIRGINIA LIMITED LIABILITY COMPANY