

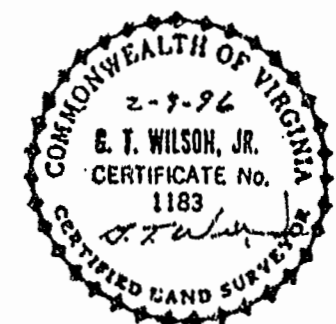
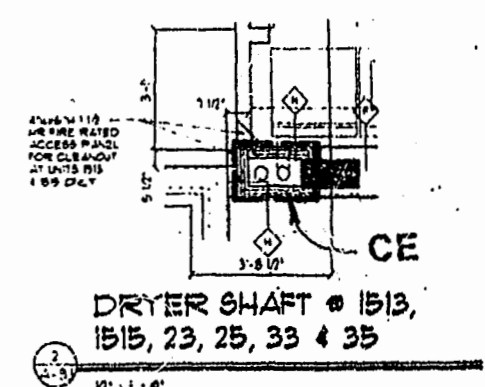
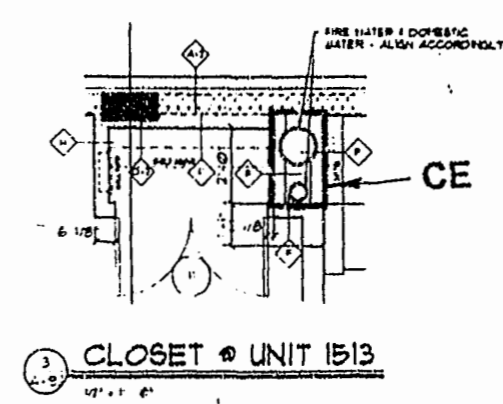
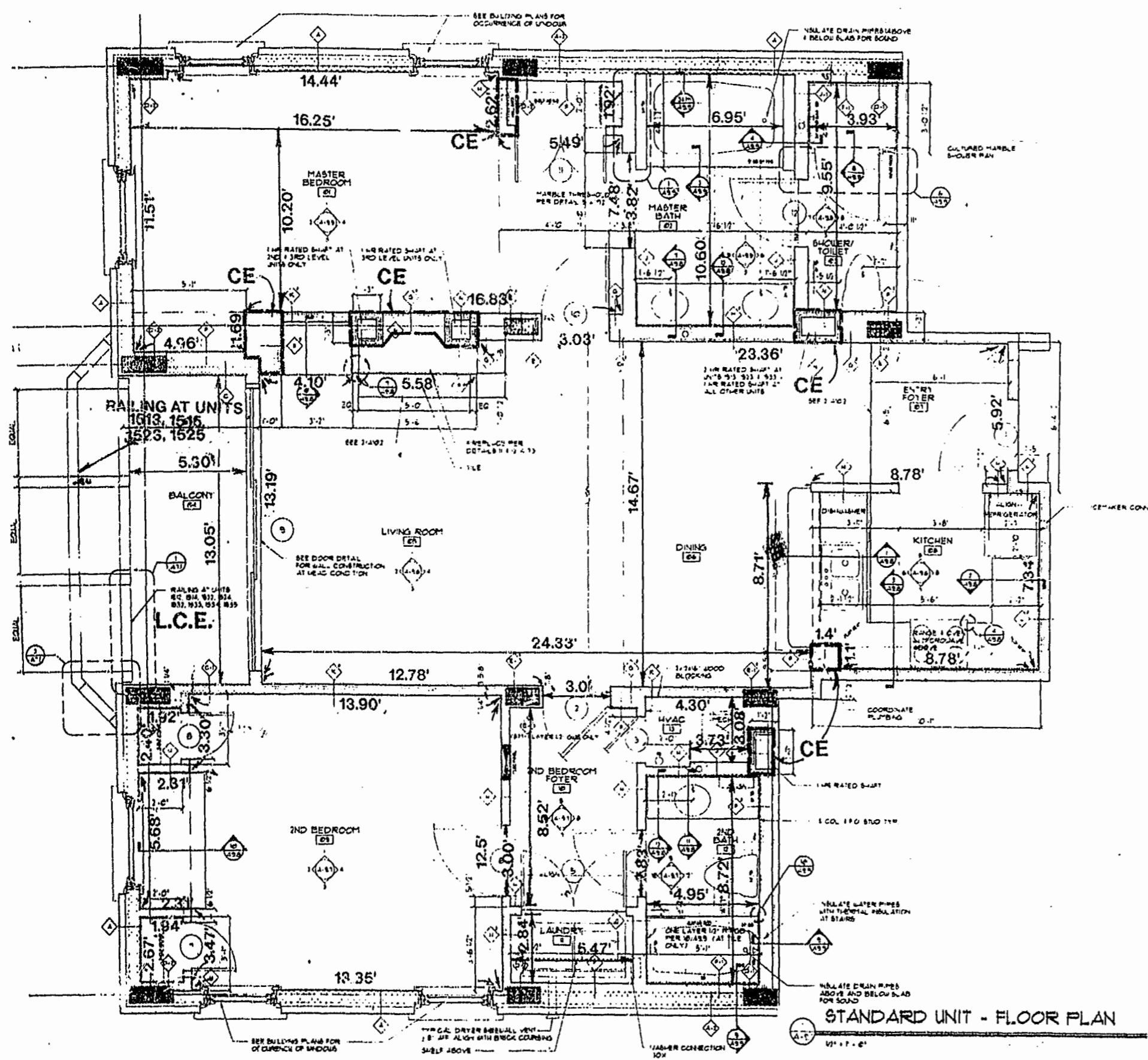
64 PAGE 42

NOTE:
BOLD DIMENSIONS BASED ON ACTUAL FIELD MEASUREMENTS.
 OTHER DATA TAKEN FROM PLANS PER NICHOLS CARTER GRANT ARCHITECTS.

BOLD DIMENSIONS SHOWN ARE TYPICAL AND BASED ON ACTUAL FIELD MEASUREMENTS OF UNITS.

STANDARD UNIT FLOOR PLAN

UNIT NO.	ORIENTATION
1512	FLIPPED
1513	FLIPPED
1514	SAME
1515	SAME
1522	FLIPPED
1523	FLIPPED
1524	SAME
1525	SAME
1532	FLIPPED
1533	FLIPPED
1534	SAME
1535	SAME

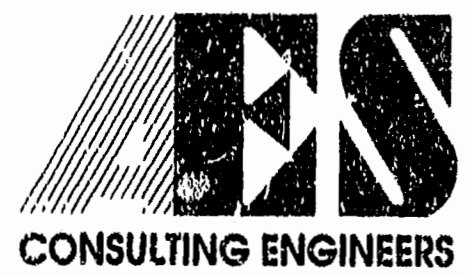


SURVEYOR'S CERTIFICATE

I HEREBY CERTIFY THAT TO THE BEST OF MY KNOWLEDGE AND BELIEF, THIS IS A CORRECT AND ACCURATE PLAT AND THAT THIS PLAT IS IN COMPLIANCE WITH VIRGINIA CODE ANNOTATED SUBSECTION 55-79.58B AND E. I FURTHER CERTIFY THAT ALL UNITS OR PORTIONS THEREOF DEPICTED HEREON HAVE BEEN SUBSTANTIALLY COMPLETE.

G. T. Wilson, Jr.
 G. T. WILSON, JR., C.L.S. 2-9-96
 DATE

EXHIBIT A-3



5248 Olde Towne Road, Suite 1
 Williamsburg, Virginia 23188
 (804) 253-0040
 Fax (804) 220-8994

**PLAT OF CONDOMINIUM
 MANOR CLUB
 AT FORD'S COLONY
 PHASE IV**
 OWNER/DEVELOPER: MARRIOTT OWNERSHIP RESORTS, INC.
 POWHATAN DISTRICT JAMES CITY COUNTY VIRGINIA

No.	DATE	REVISION / COMMENT / NOTE	BY

Designed	Drawn
Scale	Date
Project No.	7739 - CD
Drawing No.	8 of 9