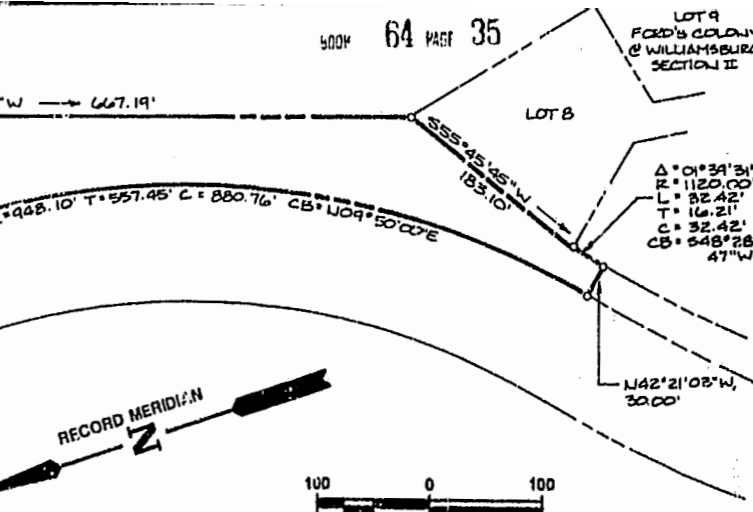
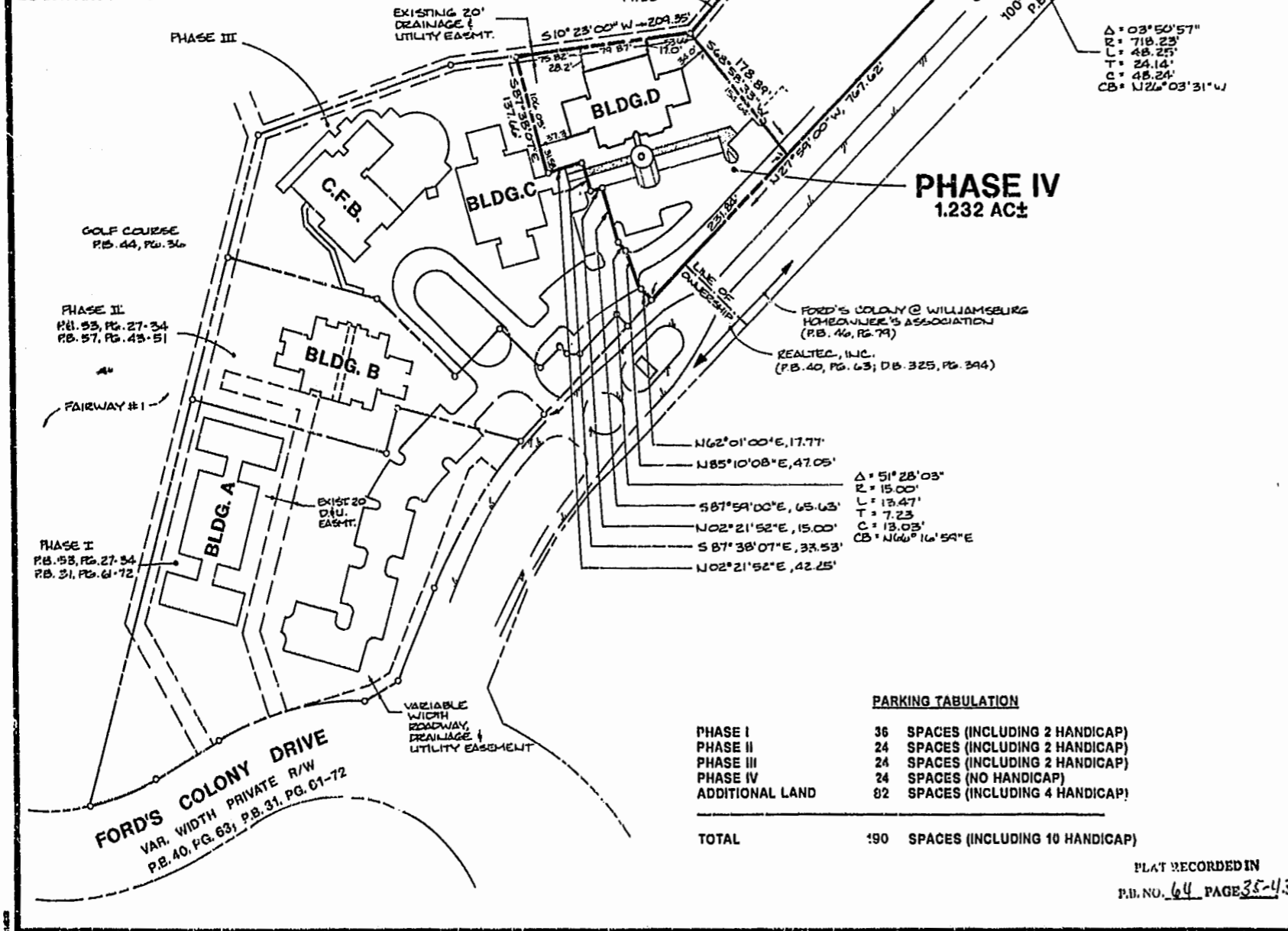




LOCATION MAP: SCALE: 1" = 2000'



ADDITIONAL LAND 4.966 ACRES±

SURVEYOR'S CERTIFICATE

I HEREBY CERTIFY THAT TO THE BEST OF MY KNOWLEDGE AND BELIEF, THIS IS A CORRECT AND ACCURATE PLAT AND THAT THIS PLAT IS IN COMPLIANCE WITH VIRGINIA CODE ANN. SUBSECTION 55-79.58 (A)

G. T. WILSON, JR., C.L.S. DATE 2-9-96

CE - COMMON ELEMENTS

COMMON ELEMENTS INCLUDE ALL PORTIONS OF THE CONDOMINIUM OTHER THAN THE UNITS SHOWN AND DESIGNATED HEREON AND DEFINED IN THE CONDOMINIUM DOCUMENTS AND THE LIMITED COMMON ELEMENTS. EXAMPLES OF COMMON ELEMENTS ARE: PARKING, PAVED AREAS, THE GROUNDS (WHETHER OR NOT LANDSCAPED), ALL PORTIONS OF THE BUILDINGS NOT A PART OF THE UNIT NOR DEFINED AS LIMITED COMMON ELEMENTS, AND ALL CONDUITS, INSTALLATION, WIRES, PIPES, EQUIPMENT, ETC. WHICH SERVE OTHER COMMON ELEMENTS OR WHICH SERVE MORE THAN ONE UNIT.

LCE - LIMITED COMMON ELEMENTS

EXCEPT AS MAY BE OTHERWISE EXPRESSLY PROVIDED, LIMITED COMMON ELEMENTS INCLUDE DOORS, WINDOWS, PORCHES, BALCONIES, AND ANY OTHER APPARATUS DESIGNED TO SERVE A SINGLE UNIT, BUT LOCATED OUTSIDE THE BOUNDARIES THEREOF.

AREA TABULATION

PHASE I	2,868 AC.±
PHASE II	1,280 AC.±
PHASE III	2,472 AC.±
PHASE IV	1,232 AC.±
ADDITIONAL LAND	4,966 AC.±

TOTAL AREA OF SITE 12,828 AC.±

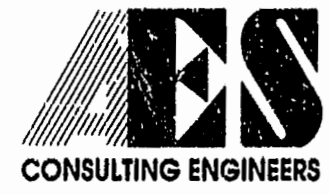
PARKING TABULATION

PHASE I	36 SPACES (INCLUDING 2 HANDICAP)
PHASE II	24 SPACES (INCLUDING 2 HANDICAP)
PHASE III	24 SPACES (INCLUDING 2 HANDICAP)
PHASE IV	24 SPACES (NO HANDICAP)
ADDITIONAL LAND	82 SPACES (INCLUDING 4 HANDICAP)
TOTAL	190 SPACES (INCLUDING 10 HANDICAP)

NOTES:

- BUILDING CONTAINS 16 UNITS, THE TOTAL NUMBER OF UNITS COVERED BY THIS PLAT IS 16.
- LOCATIONS AND DIMENSIONS OF UNITS ARE FOUND ON SHEETS 2 THROUGH 9.
- EASEMENTS FOR ELECTRIC POWER, CABLE TV, TELEPHONE AND GAS HAVE NOT BEEN ESTABLISHED.

PLAT RECORDED IN P.B. NO. 64 PAGE 35-43



5248 Olde Towne Road, Suite 1
Williamsburg, Virginia 23188
(804) 253-0040
Fax (804) 220-8994

EXHIBIT A-2

**PLAT OF CONDOMINIUM,
MANOR CLUB
AT FORD'S COLONY**

PHASE IV

OWNER/DEVELOPER: MARRIOTT OWNERSHIP RESORTS, INC.
POWHATAN DISTRICT, JAMES CITY COUNTY VIRGINIA



DESIGNED	ADS	DRAWN	MMM/RMJ
SCALE	1"=100'	DATE	2/9/96
PROJECT NO.		7739-CD	
DRAWING NO.		1 of 9	
NO.	DATE	REVISION / COMMENT / NOTE	BY

Designed ADS Drawn MMM/RMJ

Scale 1"=100' Date 2/9/96

Project No. 7739-CD

Drawing No. 1 of 9